



East Georgia

STATE COLLEGE

UNIVERSITY SYSTEM OF GEORGIA

Spring _____
COMMENCEMENT
_____ *2026*

East Georgia

STATE COLLEGE®

UNIVERSITY SYSTEM OF GEORGIA

SWAINSBORO | STATESBORO | AUGUSTA | ONLINE



Spring COMMENCEMENT

May 14, 2026

3 p.m.

GS-East Georgia Campus Gymnasium
131 College Circle, Swainsboro, Georgia

PROGRAM

Processional *Pomp and Circumstance*
(Audience please stand) Music by Edward Elgar

Gonfalonier Alan Brasher, Ph.D.
Professor of English

Macebearer Jimmy Wedincamp, Ph.D.
Professor of Biology

Pledge of Allegiance Audience Please Stand

Welcome Kyle Marrero, DMA
President of Georgia Southern University

Reflection Janiyah Smith
East Georgia State College Class of 2026

Remarks Kyle Marrero, DMA
President of Georgia Southern University

Commencement Address Larry J. “Butch” Parrish, Chairman
Georgia House of Representatives

Remarks Avinandan Mukherjee, Ph.D.
Provost and Executive Vice President for Academic Affairs

Presentation of Degrees Delana Schartner, Ph.D.
Dean of the University College

Conferring of Degrees Kyle Marrero, DMA
President of Georgia Southern University

Alma Mater Sounds of Gabriel
(Audience Please Stand) Words on inside back cover Written by Andrew Darley, EGC Class of 2008

Recessional *Pomp & Circumstance*
(Audience please stand) Music by Edward Elgar

CEREMONIAL CUSTOMS

PROCESSIONAL

The academic processional is an official prelude to the commencement ceremony. The Gonfalonier leads the procession followed by the Faculty Marshal, who bears the ceremonial Mace. Next are members of the platform party, members of the faculty, and candidates for degrees.

REGALIA

In its essential features, the academic regalia worn at American college exercises had its beginning in the Middle Ages. The oldest universities of Northern Europe grew out of church schools, and both faculty and students were regarded as a part of the clergy. Hence as their regular costume, they wore clerical garb borrowed largely from the monastic dress of their day.

The academic gown and hood were first regularly adopted by Cambridge University in 1284 and by Oxford University a little later. The custom was transplanted to this country in colonial times by King's College in New York, now Columbia University.

In 1895, American universities and colleges decided to standardize their academic styles and developed the intercollegiate code of academic costume. The style follows the Cambridge tradition. The distinctive caps, gowns, and hoods worn at present-day college and university functions denote the institution that granted the degree - bachelor, master or doctorate.

The gown is usually of black material (serge or worsted for bachelors, the same or silk for masters, and silk for doctors). Bachelors' gowns have pointed sleeves; masters' have long pouch-like sleeves which reputedly were once used to carry books, sandwiches, etc. Doctors' gowns are faced with panels of velvet down the front and three bars of velvet across each sleeve.

The square mortar-board of the cap is common in most American universities. British Canadian and some European universities use a round, soft, flat, and velvet cap. The cap commonly bears a tassel which may be black or colored according to the scholarly field of the wearer. Only the doctors' cap may be of velvet.

The hood, worn around the neck so as to hang down the back, is the principal emblem of the nature and source of the degree held. The colors in the hood lining are the colors for the school conferring the degree. The color of the border indicates the scholarly field of the wearer. Hoods may be worn only after the degree has been granted.

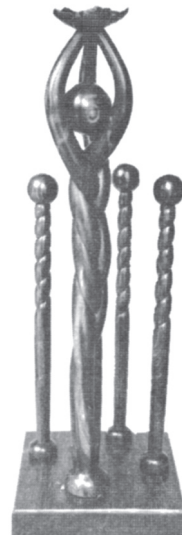
The degree colors are appropriate to the category of the degree, rather than to the specific major subject. For example, the appropriate color for degrees in Arts and Letters, (B.A., M.A.) is white; in Commerce, drab; in Education, light blue; in Engineering, orange; in Fine Arts, brown; in Humanities, crimson; in Law, purple; in Library Science, lemon; in Medicine, green; in Music, pink; in Pharmacy, olive; in Philosophy, dark blue; in Physical Education, sage green; in Science, golden yellow; in Theology, scarlet. These colors are used for the edging of all hoods and may be used for the velvet facing and sleeve bars for doctors' gowns and tassels on bachelors' and masters' caps.

MACE

A mace is a symbol used to communicate and designate authority. When the mace came into use is not known for certain, but the first recorded use was during the Middle Ages when maces, made wholly or partly of metal and often spiked, were used for breaking armor. Medieval bishops, who were forbidden to shed blood, carried maces instead of swords. Gradually, maces became ceremonial and were used as symbolic protection of the king. The use of maces extended into America by the middle of the 18th century, and they are now used primarily in colleges and universities as traditional symbols of authority.

The East Georgia State College Mace was designed and carved by Neil B. Kalmanson, Professor of Art Emeritus, who joined the faculty at the time the college opened in 1973.

Arising from the half-spherical foundation of the Mace are three columns representing the three broad disciplinary areas of academic study: Humanities, Social Sciences and Mathematics and Natural Sciences. As the columns continue upward, they interweave, forming a unity, symbolized by the free-floating sphere contained by the arms of the school. This illustrates how learning gained in each field interrelates and is synthesized into a unified body of knowledge. The Mace is capped with the Georgia State Flower, the Cherokee Rose, symbolizing a sense of place and a flowering of knowledge.



The three Batons representing broad areas of academic study also grow out of half-spherical foundations, and they, like the Mace, begin as columns then spiral, echoing the interweaving aspect of the Mace. Also, like the Mace, the disciplinary area Batons are capped with smaller spheres, representing the unity within each area of study and relating to the large sphere of the Mace.

The Mace and three Batons are arranged on the base so that all are visible when viewed from any side, symbolizing that no disciplinary area is overshadowed by another and that the strength of all three is reflected in the unity of the whole. The Mace and Batons are carved from aged Brazilian Rosewood, chosen for its beauty, durability, and figurative association with Georgia's Cherokee Rose.

GONFALON



The gonfalon, a banner or flag of the middle ages, took the form of a pennant attached below the head of a knight's lance and was used in religious processions and ceremonies, or as the banner of a city, state or military order. It later became a multi-streamered rectangular ensign, frequently swinging from a crossbar attached to a pole. The title of gonfalonier, the bearer of the gonfalon, was in the middle ages both military and civil.

Represented within the East Georgia State College logo on the gonfalon are tall pines designating the three broad disciplinary areas of academic study at the College: Humanities, Social Sciences, and Mathematics and Natural Sciences. The outer circle symbolizes the unity of the three academic schools within one another. The colors (green and gold) represent the official colors of East Georgia State College.

COMMENCEMENT SPEAKER

Representative Larry J. “Butch” Parrish

Georgia House of Representatives 158th District

A graduate of Swainsboro High School, Representative Parrish went on to earn his Bachelor of Science in Pharmacy from the University of Georgia, where he also served as president of his senior class in pharmacy school. His commitment to leadership and service began early and has remained a constant throughout his career.

He has been deeply involved in his community, serving as past president of both the Swainsboro Exchange Club and the Swainsboro/ Emanuel County Chamber of Commerce, as well as serving three terms on the Swainsboro City Council.

At the state level, Representative Parrish has made a lasting impact. He served two terms on the board of the Georgia Department of Community Affairs, including one year as chairman. His dedication has earned him numerous honors, including being named Emanuel County’s Person of the Year in 2020 and receiving Legislator of the Year recognitions from several organizations, including the Georgia Rural Health Association, the Georgia Public Health Association, and the Georgia Hospital Association. He has also been recognized as a Family Medicine Legislative Champion by the Georgia Academy of Family Physicians.

Currently serving his 21st term in the Georgia House of Representatives, he represents House District 158, which includes Candler, Emanuel, Jenkins, and Treutlen counties, as well as portions of Bulloch County. He plays a key leadership role as Chairman of the Rules Committee and the Special Committee on Healthcare, and serves on several additional committees focused on appropriations, health, economic development, and community well-being.



REFLECTION SPEAKER

Janiyah Smith

Janiyah Smith is a proud native of Fort Lauderdale and a graduating member of the Class of 2026 at East Georgia State College. During her time in college, she has been deeply involved on campus as a Student Ambassador, a member of Student Life, a former Student Government Association Senator, and a dedicated student-athlete on the women’s basketball team. Through these roles, she has demonstrated leadership, service, and a strong commitment to her campus community.

Raised by a strong and resilient single mother alongside five siblings, Janiyah learned early on the values of perseverance, sacrifice, and determination. Her journey is a reflection of the unwavering support of her family and her drive to create opportunities not only for herself but for those who will follow in her footsteps.

As she transitions to Georgia Southern University, she will continue her academic journey majoring in Biomedical Sciences, with aspirations of attending Emory University School of Medicine. Her ultimate goal is to pursue a career in medicine, specializing in either neurology or cardiology, where she hopes to make a lasting impact by saving lives and advancing healthcare.

With a passion for service, a heart for helping others, and a determination to succeed, Janiyah is ready to spread her wings, soar higher, and turn her dreams into reality.

LEADERSHIP DISTINCTION

Advancing leadership is an important component of EGSC's mission. Students who demonstrate extensive, purposeful engagement beyond the classroom are recognized for their leadership, service, and campus involvement in the following programs:



African American Male Initiative (AAMI)

Graduates who have participated in this initiative are distinguished by a black honor cord. Graduates with a 3.5 GPA or higher are also distinguished by an AAMI medallion.



Ambassador Program

Graduates who have served as Ambassadors are distinguished by a purple, green and gold cord.



CHOICE Inclusive Learning Program

CHOICE is a two-year collegiate program culminating in the receipt of college course credit, workforce preparedness and lifelong learning experience. The CHOICE inclusive program is designed for students with disabilities who desire a complete college immersion experience.



Military

Graduates with military service, active or retired, are distinguished by a navy cord.



Service Seal of Distinction

Graduates who have completed program requirements for the Service Seal of Distinction receive a special designation on their transcript and a special seal on their diploma.



Student Government Association (SGA)

Graduates who have served on the SGA are distinguished by a red, white and blue cord.

ACADEMIC DISTINCTION

East Georgia State College recognizes students who go above and beyond expectations to contribute to the intellectual, academic and collegial atmosphere of the college.

Colored tassels adorn the mortarboard of graduates and distinguish their program of study, as follows:

- Associate of Arts and Associate of Science degree.....Green
- Bachelor of Science degree..... Golden Yellow
- Certificate of Accomplishment in Work Readiness Skills.....Green, Gold and White

Honor Graduates

Graduates who accomplish a high level of academic achievement, as reflected by their overall cumulative grade point average (GPA) are distinguished by a gold cord. The following distinction is also indicated on their transcripts and diplomas:

Grade Point Average	
3.5 – 3.79	cum laude
3.8 – 3.89	magna cum laude
3.9 – 4.0	summa cum laude

Beta Beta Beta National Biological Honor Society

Beta Beta Beta (TriBeta) is an honor society for students dedicated to improving the understanding and appreciation of biological study and extending boundaries of human knowledge through scientific research. Graduates who are members of East Georgia State College's Tau Epsilon Tau Chapter are distinguished by a forest green and red cord.

Phi Theta Kappa Honor Society

Phi Theta Kappa is an honor, educational-service organization that seeks to develop leadership potential and encourage fellowship among students. Graduates who are members of Phi Theta Kappa are distinguished by a gold and blue cord.

CANDIDATES FOR GRADUATION

ASSOCIATE OF ARTS

Elementary Education

Janiyah Diamayanti Adams
Courtney Leigh Beasley
Gracelynn Elaine Boyles
Yasmine Alaya Brooks
Desmond Travon Brown
Alaina Madison Conley
Tribeca Davis
Jakiyah Chynnese Green
Jaylin Michelle Hall

Katelyn Mackensi Harris
Precious Ji'asia Heath
Olivia Christine Hill
Allison Ingram
Elanna Ariel Tesa Jones
Benjamin Aiden Lewis
Mykiaira Jamari Myrick
Jonathan Marcus Noel
Floyd Stanley Norman

Carson Wyatt Ricks
Danielle Kamara Roberson
Josey Rose Scott
Brooklyn Simone Scrubb
Jesslyn Arianna Smith
Shelley Lynn Starling
Maimouna Meriem Tanimoun
A'koore Lajarh Nikole Thomas
Kaitlynn Wilson Peel

Liberal Arts

Ravyn Nicole Anaya-Jones
Angelica Mikalah Anderson
Janiah Renee Blount-Solomon
Zebulan Dushon Carson
Aubrey Margaret Clarke
Sylvia Kristen Cobb
Jaydon Deandre Cobbs
Rebecca Nalleli Cruz
Medora Iman Davidson
Dezteny Rae Dixon
Talan Dixon
Brandy Christina Dunbar
Toni Aniya Emetu
Ian Macrae Field
Navae' Serenity Flores
Erynn Freeman
Isay Gonzalez-Juarez
Brylen David Goss
Nyiah Cheri Graham
Adyn Jamal Grant
Martin Kahlael Handsom
Bryce Kolin Harrelson
Farah Noor Hassan
Tahjae Dayvion Hawes
Jocie Grace Hendrix
Malik Jamal Hinton
Nathan Xavier Hooker
Carmen Shawndreyah Horton

Courtnei Sequan Houston
Kaylie Marie Hunter
Isabela Victoria Ibarra
Chibueze Charles Iroajanma
Monet Clenteria Ivy
Deago Jeremias Jackson
Chelsea Iyona Jones
Joniyah Shavon Jones
Mohamed Kamara
Neveah Lynette King
Jacklyn Maria Kurtz
Halei Nashay Lamb
Jordan W Lee
Jamyra Tynae' Lewis
Matthew Elisha Lumpkin
Brantley Jason Martin
Darius Lanier May
Ryleigh Mason McCray
Quinn Cadence McIntyre
Leana Minus
Russell Kyle Mobley
Brady Patrick Moretz
Kia Kiana Moss
Benvonte Jakari Murray
Shalandria Parker
Dhruv Rajeshkumar Patel
Stockton Maxwell Patterson
Joseph Christopher Pearson

Amber Dawn Purcell
Khalid Langston Racine
Alice Daryana Reese
Bruce Yurnell Reese
Damin Cameron Renfro
Ariel Brianna Reynolds
Michael Jeffrey Reynolds
Franklyn Jarmal Richardson
Jarissa Annette Robinson
Jose Vasquez Sanchez
Ja'laya Da'maya Saunders
Yanasia Danielle Sharpe
Bernard I Sims
Aubrey Brooke Slater
Janae Smith
Janiyah Jenise Smith
Jerry Adell Smith
Bailee Michele Thames
JaBrittney Tremble
Jayden Jose Vazquez
Elijah Christopher Vinson
Mason Webb
Shane Alexander Wheelless
Brianna Na'lani Wilder
Elon Michelle Williams
Tanyia Charlice Williams
Zamirah Danaizhia Williams
Jayden Nycole Wynn

Social Science

Naomi Larae Berk
Taylor Bumgardner
Nahilah Neco Clarke
Marisa Lamar Cooksey
Jade Curd
Sarah Therese Dessources
Logan Donald Durrence
Nicole Gilmore
Zy'Kerria Brianna Hicks
Phoenix Truitt Hill

Erin Nicole Hood
William John Huffman
Konner Miles Leggett
Kahnya Samone Lester
Chirsten Dallas McCoy
Latosha Munir
Makayla Cierra Neely
Tiffany Pound
Kaitlyn Suzanne Reininger
Libby Rebekah Riner

Tabria Lil'Marian Spicer
Jayla Terrell Stokes
Naija Ranae Taylor
Aaron Michael Tucker
Keanu A Walters
Dariah Elise Williams
Destiny Faye Williamson
Jadyn Shania Wright
Quron Thomas Young

NOTE:

The list of graduates on these pages is subject to change and includes students who may have pending degree requirements.

CANDIDATES FOR GRADUATION

ASSOCIATE OF SCIENCE

Business Administration

Ansley Nicole Akins
Logan Marie Albritton
Priscila Alcocer Rodriguez
Jennifer Pollard Atkins
Tripp Vance Baggott
Sean Joseph Ballmann
Jaylen Dequavion Banks
Zachariah Elijah Bell
Adrien Michelle Braddy
Adrien Michelle Braddy
Cooper Avry Brantley
Heath Dylan Byrd
Jasmine D Crew
Hollis O Evans
Mikala Grace Frawley
Nigel Christopher Green
Cody O Ryan Hall

Jaida Mckenize Harrell
Jessica Shea Harrell
Alynnza Leigh Hughes
Trey Dalton Hughes
Wyatt Wesley Jenkins
Jontavian Lewis Johnson
Kristian Jakayla Johnson
Brandon Noah Kasper
Samantha Denise Kennedy
Angelica Maria Lara
Jamilya Ahjenai Lee
Iyannah Monae Love
Kyler Sean Martin
Mauricio Martinez-Matias
Janyis Christian Mobley
Robert Riley Morgan
Mason Jay Morris

Turner Benjamin Motes
Lillie Mae Olson
Colton James Price
Christopher Lee Richardson
Lorie A. Rosier
Alfonzo Wesley Ross
Ti'Tianna Alexandria Settles
Sharon S Simmons
Myles Alexander Squirewell
Leslie Nichol Torres
Khris Raysean Lennon Washington
Preston Ryan White
Chase Whittle
Truth Jana' Wimberly
Lainey Nicole Womack

Financial Technology

Katlyn Shakeria Dixon

Ian Glenn Hester

Spencer Lee Strobridge

Natural Sciences

James Wellington Chamberlain
Alyssa Muriel Fletcher

Demaria Jasmine Hilton
Noa Elise Murray

Whitney Ann Thompson
Ryan Alexander Tripp

BACHELOR OF SCIENCE

Business Administration

Amber White O'Connor

Criminal Justice

Shantavia Kneesha Carter
Christina Teresa Fulcher

Tanesha Ronshay Mills
Rafael Maria Nunez Rodriguez

Organizational Leadership

Amiaya Creeyana Ware

CERTIFICATE OF ACCOMPLISHMENT

CHOICE

Malayshia Richionna Monique Daughtry
Stacey Darnell Jackson

Kevin Jiang
Joshua Christopher Thompson

IN MEMORIAM

A memorial candle burns brightly on this most special occasion as we remember those in the EGSC family who are close in our hearts, yet no longer with us.

ACKNOWLEDGMENTS

Thank you for your participation in making
commencement a memorable event.

STUDENT MARSHALS

Adam Kay
Janessa Andrews

FACULTY MARSHALS

David Chevalier
Natasha Goss
Jaehyuk Lee
Amelia Simmons
Jessica Todd

USHERS

Student Success Coaches
Student Government Association Members
Student Ambassadors

East Georgia

S T A T E C O L L E G E®

East Georgia State College Alma Mater

*Written by Andrew Darley
Class of 2008*

In the heart of eastern Georgia,
‘Neath the pines of green,
Proudly stands our Alma Mater--
Noble and serene.

May thy triumphs, dear East Georgia,
Ever be proclaimed.
May thy loyal sons and daughters
Magnify thy name.

Through the years of time’s swift passing,
We shall ever be.
One with thee, our Alma Mater--
One with EGSC.

Chorus:
Lift the chorus to East Georgia--
Let her grace be told.
Glory to our Alma Mater!
Hail to green and gold!

This abbreviated version of our Alma Mater is performed for Commencement Ceremonies at EGSC. For the full version of our Alma Mater, please see our website.

East Georgia

STATE COLLEGE[®]

UNIVERSITY SYSTEM OF GEORGIA

SWAINSBORO | STATESBORO | AUGUSTA | ONLINE

www.ega.edu