

# East Georgia

STATE COLLEGE®

SWAINSBORO | STATESBORO | AUGUSTA | ONLINE



# 2025

# Fact Book



Office of Strategic Planning  
and Institutional Research

4/16/2025

# East Georgia State College Fact Book 2025

## Table of Contents

### 1 **ABOUT THE COLLEGE**

- 2 East Georgia State College History
- 3 East Georgia State College Vision and Mission
- 3 East Georgia State College Accreditation
- 4 East Georgia State College Carnegie Classification
- 5 East Georgia State College Swainsboro Campus Map and Legend
- 6 East Georgia State College Service Area Map
- 7 East Georgia State College Economic Impact: Fiscal Years 2014-2023
- 8 East Georgia State College Goals and Strategies

### 9 **ADMINISTRATION**

- 10 University System of Georgia Board of Regents 2025
- 11 University System of Georgia Administrative Staff 2025
- 12 East Georgia State College Organization Chart 2025
- 13 East Georgia State College Organization Chart: Academic Affairs
- 14 East Georgia State College Organization Chart: Student Affairs
- 15 East Georgia State College Organization Chart: Enrollment Management
- 16 East Georgia State College Organization Chart: Augusta
- 17 East Georgia State College Organization Chart: Statesboro
- 18 East Georgia State College Organization Chart: Business Affairs
- 19 East Georgia State College Organization Chart: Information Technology
- 20 East Georgia State College Organization Chart: Institutional Advancement
- 21 East Georgia State College Organization Chart: Athletic Department
- 22 East Georgia State College Organization Chart: Police Department
- 23 East Georgia State College Cabinet: Spring 2025
- 24 The East Georgia State College Foundation: 2024-25 Trustees

### 25 **ADMISSIONS**

- 26 Applied, Accepted and Registered Fall Semester 2015-2024
- 26 Beginning Freshmen: Fall Semester 2015-2024
- 26 Mean Scholastic Aptitude Test (Old SAT) Scores for Beginning Freshmen: Fall Terms 2012-2021
- 26 Mean Scholastic Aptitude Test (New SAT) Scores for Beginning Freshmen: Fall Terms 2016-2024
- 27 Georgia High Schools of Beginning Freshmen: Fall 2024

### 28 **STUDENT FINANCIAL INFORMATION**

- 29 Semester Tuition and Fees Fall 2024 – Spring 2025
- 30 EGSC SACSCOC and IPEDS Peer Colleges
- 31 EGSC and IPEDS Peer College Comparisons:
  - 31 • Academic Year Tuition and Fees for Full-Time, First Time Undergraduates FY 2021 - FY 2024
  - 31 • Academic Year Average Net Price of Attendance for Full-Time, First Time Undergraduates FY 2021 - FY 2023
  - 32 • Percent of Full-Time, First-Time Students Awarded Aid FY 2023
  - 32 • Average Amount Awarded of Full-Time, First-Time Students Awarded Aid FY 2023

# East Georgia State College Fact Book 2025

## Table of Contents

<u><a href="#">33</a></u>	<b>ACADEMIC INFORMATION</b>
<u><a href="#">34</a></u>	Associate and Baccalaureate Degree List
<u><a href="#">35</a></u>	Degrees Conferred FY 2014-15 through FY 2023-24
<u><a href="#">36</a></u>	Degrees Conferred by Academic Program FY 2019 through FY 2024
<u><a href="#">37</a></u>	Three-Year Completion Rates for Fall Semester First-Time Full-Time Associate Degrees: Entering Cohorts 2012-2021
<u><a href="#">38</a></u>	Distribution of Grades by Class: Academic Year 2023-24
<u><a href="#">38</a></u>	Participation in Education Abroad at the East Georgia State College: Academic Years 2009-10 through 2018-19
<u><a href="#">38</a></u>	Library Resources FY 2022-23
<u><a href="#">38</a></u>	Library Visitors FY 2019-20 – FY 2023-24
<u><a href="#">39</a></u>	Credits Hours Earned to Attempted by Semester and Course Delivery Mode Summer 2014 – Spring 2024
<u><a href="#">40</a></u>	<b>ENROLLMENT</b>
<u><a href="#">41</a></u>	Enrollment Charts: Fall Enrollment and Fall to Fall Percentage Change in Enrollment 1973-2024
<u><a href="#">42</a></u>	Enrollment Counts by Class Level: Fall Semester 2015-2024
<u><a href="#">42</a></u>	Enrollment Percentages by Class Level: Fall Semester 2015-2024
<u><a href="#">42</a></u>	Enrollment Chart by Class Level: Fall Semester 2015-2024
<u><a href="#">43</a></u>	Enrollment Counts by Location and Mode of Delivery: Fall Semester 2015-2024
<u><a href="#">43</a></u>	Enrollment Percentages by Location/Delivery Mode: Fall Semester 2015-2024
<u><a href="#">43</a></u>	Enrollment Chart by Location and Mode of Delivery: Fall Semester 2015-2024
<u><a href="#">44</a></u>	Fall Semester 2024 Counts of Gender and Ethnicity by Class Level
<u><a href="#">44</a></u>	Fall Semester 2024 Percentages of Gender and Ethnicity by Class Level
<u><a href="#">45</a></u>	Fall Semester 2024 Counts of Gender and Ethnicity by Location/Mode of Delivery
<u><a href="#">45</a></u>	Fall Semester 2024 Percentage of Gender and Ethnicity by Location/Mode of Delivery
<u><a href="#">46</a></u>	Fall Semester 2024 Enrolled Georgians by County of Residence
<u><a href="#">47</a></u>	Fall Semester 2024 Percentages of Student Load by Class Level
<u><a href="#">47</a></u>	Fall Semester 2024 Number of Veteran/Military Students
<u><a href="#">47</a></u>	Retention Rates for Fall Semester First-Time Full-Time Undergraduates: Entering Cohorts 2014-2023
<u><a href="#">48</a></u>	<b>STUDENT RELATED INFORMATION</b>
<u><a href="#">49</a></u>	East Georgia State College – Swainsboro Crime Statistics Calendar Years 2021, 2022, and 2023
<u><a href="#">50</a></u>	East Georgia State College Graduate Alumni by State of Residence through Fall 2024
<u><a href="#">50</a></u>	East Georgia State College Graduate Alumni by Georgia County of Residence through Fall 2024
<u><a href="#">51</a></u>	<b>FACULTY AND STAFF</b>
<u><a href="#">52</a></u>	Full-Time Faculty by Teaching Assignment Location Spring Semester 2025
<u><a href="#">53</a></u>	Full-Time Professorial Faculty by Rank and Ethnicity: Fall 2024
<u><a href="#">53</a></u>	Average Academic Year Salaries of Instructional Faculty, EGSC and Selected Peers: Academic Year 2024
<u><a href="#">53</a></u>	Average Academic Year Salaries Chart of Instructional Faculty, EGSC & Selected Peers: Academic Year 2024
<u><a href="#">54</a></u>	College Full-Time Employees by Occupational Classification, Gender and Ethnicity: November 1, 2024
<u><a href="#">55</a></u>	<b>FINANCIAL INFORMATION</b>
<u><a href="#">56</a></u>	Revenue by Source: Fiscal Years 2019 through 2023
<u><a href="#">57</a></u>	Expenditures by Function: Fiscal Years 2019 through 2023
<u><a href="#">58</a></u>	EGSC Foundation Fundraising: Fiscal Years 1999 through 2024
<u><a href="#">59</a></u>	<b>PHYSICAL FACILITIES</b>
<u><a href="#">60</a></u>	College Buildings by Major Use, Swainsboro Campus: Spring 2025
<u><a href="#">60</a></u>	Number of Rooms by Basic Room Type, Swainsboro Campus: Spring 2025
<u><a href="#">60</a></u>	Space Assignment by Room Use and Building Location: Spring 2025
<u><a href="#">60</a></u>	East Georgia State College Land Holdings as of December 2024

# ABOUT THE COLLEGE

### History of East Georgia State College

As early as 1956, community leaders in Emanuel County and Swainsboro urged the state to establish a two-year college in the area. Committees were formed in 1956 and in 1965, and lobbying efforts at the state level were undertaken, but without immediate results. In December 1969, the Board of Regents of the University System of Georgia authorized a study to determine the need for additional two-year colleges in the state. A year later, six possible sites, including the Swainsboro–Emanuel County area, were approved with the stipulation that the county of each prospective site provide the land or property for a campus site, as well as the funds for constructing and furnishing the initial physical plant.

In September 1971, the citizens of Emanuel County voted for a bond issue of \$2.1 million to underwrite the cost of a new college. The Emanuel County Board of Education, representing the citizens of the county and working with the local college committee, also provided a wooded site of 207 acres (190 acres of which were donated by Luck Flanders Gambrell) within the city limits of Swainsboro. In December 1971, the Board of Regents gave final approval for the campus site and named the new college Emanuel County Junior College (ECJC).

ECJC opened in Fall Quarter 1973. In 1987 the University System of Georgia mandated that the term “junior” be deleted from the names of its two-year institutions, and in 1988 Emanuel County Junior College became East Georgia College. The \$2.1 million bond issue was also paid off in 1988.

In 2012, after being granted state college status, the College’s name was again changed to East Georgia State College (EGSC) to reflect a new mission of providing a limited number of baccalaureate degrees targeted to meet the needs of the College’s service area. In addition to a Bachelor of Science in Biology, beginning in Fall Semester 2012, the ECSC launched an online Bachelor of Art in Fire and Emergency Services Administration in Spring Semester 2016 and an online Bachelor of Science RN to BSN Bridge Nursing Completion Program in Fall Semester 2017. Both of these online degree programs were designed to meet the needs of working professionals who seek to advance their careers.

Because of the decline in enrollment caused by the COVID-19 pandemic, the College’s three baccalaureate degree programs, along with several associate degree programs, were determined to be unsustainable and were closed to new admissions in August 2021. Beginning in Fall Semester 2021, meta-majors at the associate degree level were created for the social sciences and the natural sciences to provide efficient pathways for students completing an associate degree at EGSC to go on to complete a baccalaureate degree at another USG institution with seamless transferability of credit hours earned. In addition, EGSC was approved to begin offering its students one associate and two bachelor eMajor online degrees in cooperation with USG eCampus. The College launched its own Bachelor of Business Administration degree program in Spring Semester 2025.

Through the years, East Georgia State College has proudly maintained its original strategic purpose as an access institution with strong community ties and continues, today, to adhere to its original mission by providing accessibility to a wide range of academic programs in an atmosphere contributing to the intellectual and cultural growth of our students.

Many in East Georgia State College’s diverse student population are first generation and non-traditional college students who have been raised in economically depressed conditions within rural east-central Georgia. By tailoring our academic programs to meet the challenging developmental needs through learning support while also maintaining affordable tuition, East Georgia State College has been successful in increasing the educational levels of the communities it serves. In 2023, EGSC celebrated its 50<sup>th</sup> anniversary.

At its meeting in April 2025, the USG Board of Regents approved Chancellor Sonny Perdue’s recommendation that East Georgia State College be consolidated with Georgia Southern University. The next step is to undergo review and approval of the consolidation by the Board of Trustees of the Southern Association of Colleges and Schools Commission on Colleges (SACSCOC). Upon SACSCOC approval of the consolidation, we look forward to the next 50 years of service to Southeast Georgia as a campus of Georgia Southern University!

### Vision and Mission of East Georgia State College

Presented below are East Georgia State College's (EGSC's) vision and mission statements. EGSC's vision statement provides the long-term context for pursuing a mission that focuses on extending the College's associate of arts degree options to multiple student populations and developing baccalaureate degrees targeted to the needs of its service area.

#### **Vision Statement**

Through bold and transformative action, East Georgia State College aspires to significantly increase the educational achievement of its students and to be an indispensable pathway to a more fulfilling and prosperous future.

#### **Mission Statement**

East Georgia State College is an associate degree granting, liberal arts institution of the University System of Georgia providing its students access to both academically transferable programs of study and collaborative programs in occupation related fields. The College also offers targeted baccalaureate level degrees that support the University System's initiative to expand educational opportunities. The College prepares traditional and nontraditional students for success in the global 21<sup>st</sup> century through a technologically advanced teaching and learning environment that fosters personal growth by utilizing an expanding range of resources and amenities, including an on-campus student residential option. The College also continuously engages the communities it serves through public service and cultural enrichment.

### **Accreditation of East Georgia State College**

East Georgia State College is accredited by the Southern Association of Colleges and Schools Commission on Colleges to award certificates, associate degrees and baccalaureate degrees. Questions about the accreditation of East Georgia State College may be directed in writing to the Southern Association of Colleges and Schools Commission on Colleges at 1866 Southern Lane, Decatur, GA 30033-4097, by calling (404) 679-4500, or by using information available on SACSCOC's website ([www.sacscoc.org](http://www.sacscoc.org)).

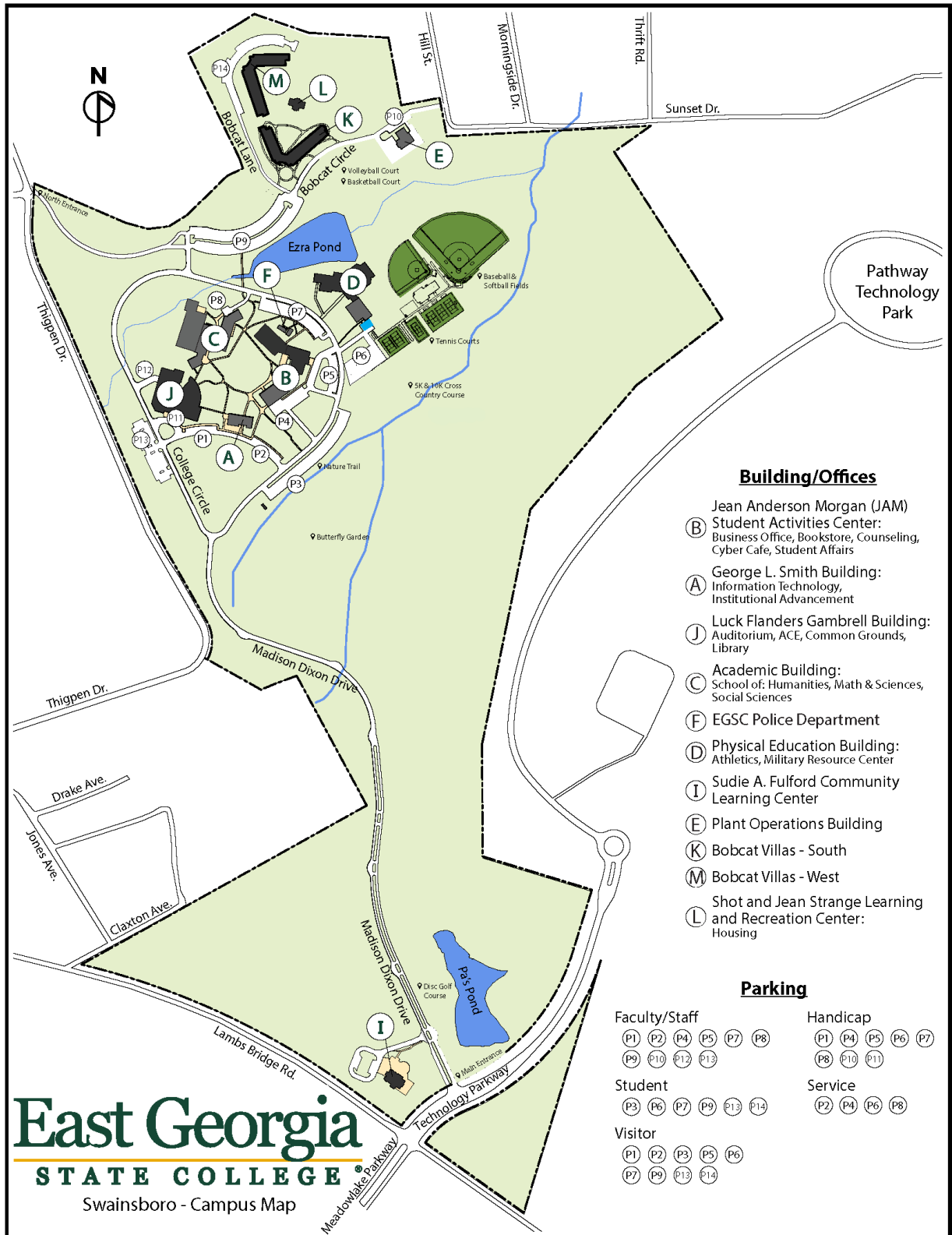
**EGSC Carnegie Classification** (Source: <http://carnegieclassifications.iu.edu/>)

Classification	Category (Classification Definitions)
Basic	<p><u>Baccalaureate/Associate's Colleges</u>: Includes four-year colleges, by virtue of having at least one baccalaureate degree program, that conferred more than 50 percent of degrees at the associate's level (but excluding special focus institutions, Tribal Colleges and Universities, and institutions that have sufficient master's or doctoral degrees to fall into those categories). These institutions are divided into two subcategories: Mixed Baccalaureate/Associate's Colleges are those that conferred more than 10% of degrees at the baccalaureate level or higher (fewer than 90% associate's degrees); Associate's Dominant institutions are those that conferred fewer than 10% of degrees at the baccalaureate level or higher (at least 90% associate's degrees).</p> <p><b>Baccalaureate/Associate's Colleges: Associate's Dominant.</b></p>
Undergraduate Instructional Program	<p><u>Baccalaureate/Associate's Colleges</u>: These institutions awarded both associate's and bachelor's degrees, but the majority of degrees awarded were at the associate's level.</p>
Graduate Instructional Program	(Not Classified)
Enrollment Profile	<p><u>Exclusively undergraduate four-year</u>: Fall enrollment data show only undergraduates enrolled at these bachelor's or higher degree granting institutions.</p>
Undergraduate Profile	<p><u>Full-time, inclusive, lower transfer-in</u>: Fall enrollment data indicate 60–79 percent of undergraduates are enrolled full-time at these bachelor's or higher degree granting institutions. These institutions either did not report test score data or the scores indicate that they extend educational opportunity to a wide range of students with respect to academic preparation and achievement. Fewer than 20 percent of entering undergraduates are transfer students.</p>
Size and Setting	<p><u>Four-year, small, primarily nonresidential</u>: Fall enrollment data indicate FTE* enrollment of 1,000–2,999 degree-seeking students at these bachelor's or higher degree granting institutions. Fewer than 25 % of degree-seeking undergraduates live on campus** and/or fewer than 50 % attend full time (includes exclusively distance education institutions).</p>

\*FTE: Full-time equivalent enrollment was calculated as full-time plus one-third part-time.

\*\*On campus is defined as institutionally owned, controlled, or affiliated housing.

**East Georgia State College Swainsboro Campus Map and Legend**



**Building/Offices**

- (JAM) Jean Anderson Morgan (JAM)
- (B) Student Activities Center: Business Office, Bookstore, Counseling, Cyber Cafe, Student Affairs
- (A) George L. Smith Building: Information Technology, Institutional Advancement
- (J) Luck Flanders Gambrell Building: Auditorium, ACE, Common Grounds, Library
- (C) Academic Building: School of: Humanities, Math & Sciences, Social Sciences
- (F) EGSC Police Department
- (D) Physical Education Building: Athletics, Military Resource Center
- (I) Sudie A. Fulford Community Learning Center
- (E) Plant Operations Building
- (K) Bobcat Villas - South
- (M) Bobcat Villas - West
- (L) Shot and Jean Strange Learning and Recreation Center: Housing

**Parking**

- |                                 |                          |
|---------------------------------|--------------------------|
| <b>Faculty/Staff</b>            | <b>Handicap</b>          |
| (P1) (P2) (P4) (P5) (P7) (P8)   | (P1) (P4) (P5) (P6) (P7) |
| (P9) (P10) (P12) (P13)          | (P8) (P10) (P11)         |
| <b>Student</b>                  | <b>Service</b>           |
| (P3) (P6) (P7) (P9) (P13) (P14) | (P2) (P4) (P6) (P8)      |
| <b>Visitor</b>                  |                          |
| (P1) (P2) (P3) (P5) (P6)        |                          |
| (P7) (P9) (P13) (P14)           |                          |

**East Georgia**  
**STATE COLLEGE**  
 Swainsboro - Campus Map

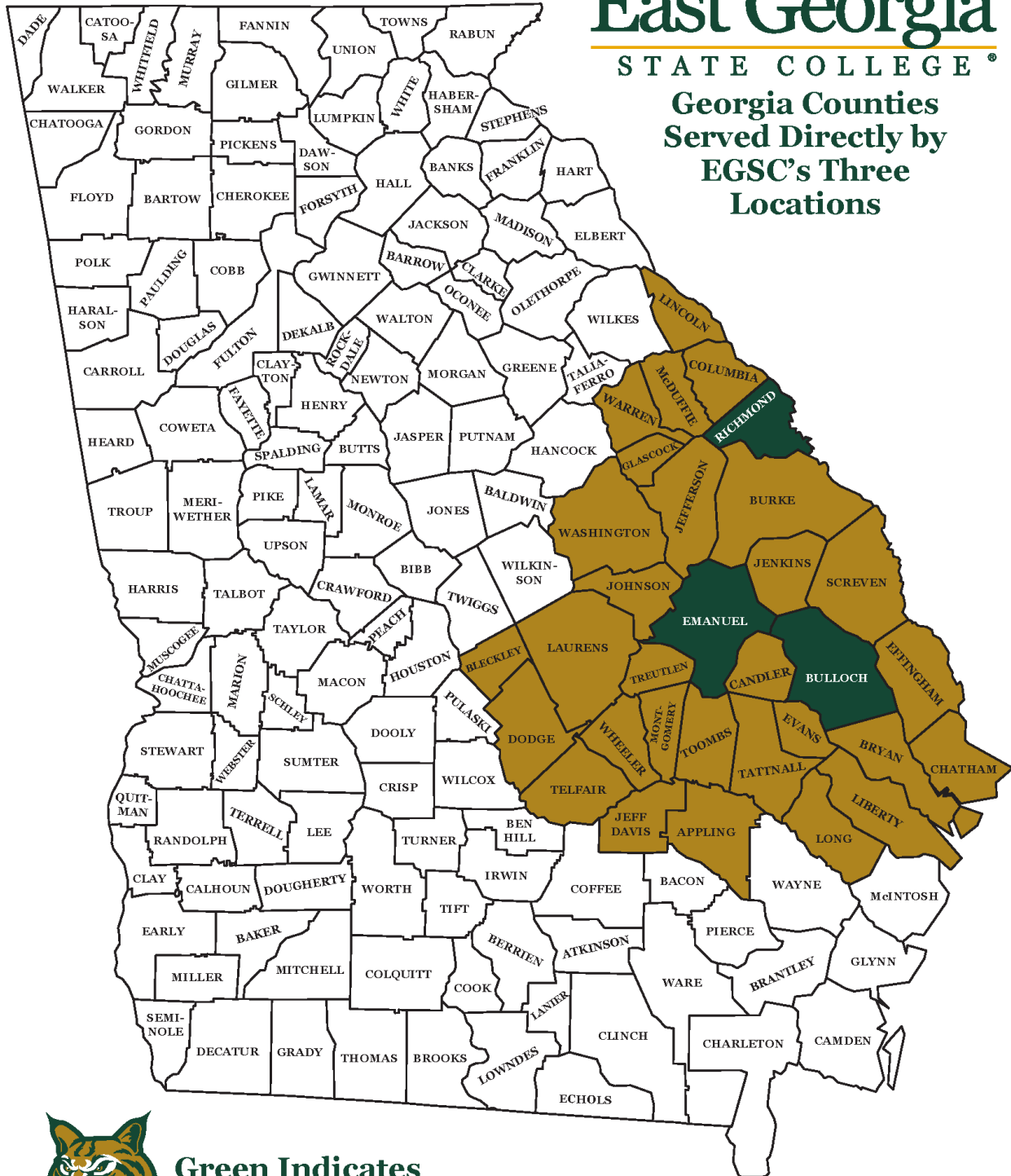


East Georgia State College Service Area Map

# East Georgia

STATE COLLEGE®

Georgia Counties Served Directly by EGSC's Three Locations



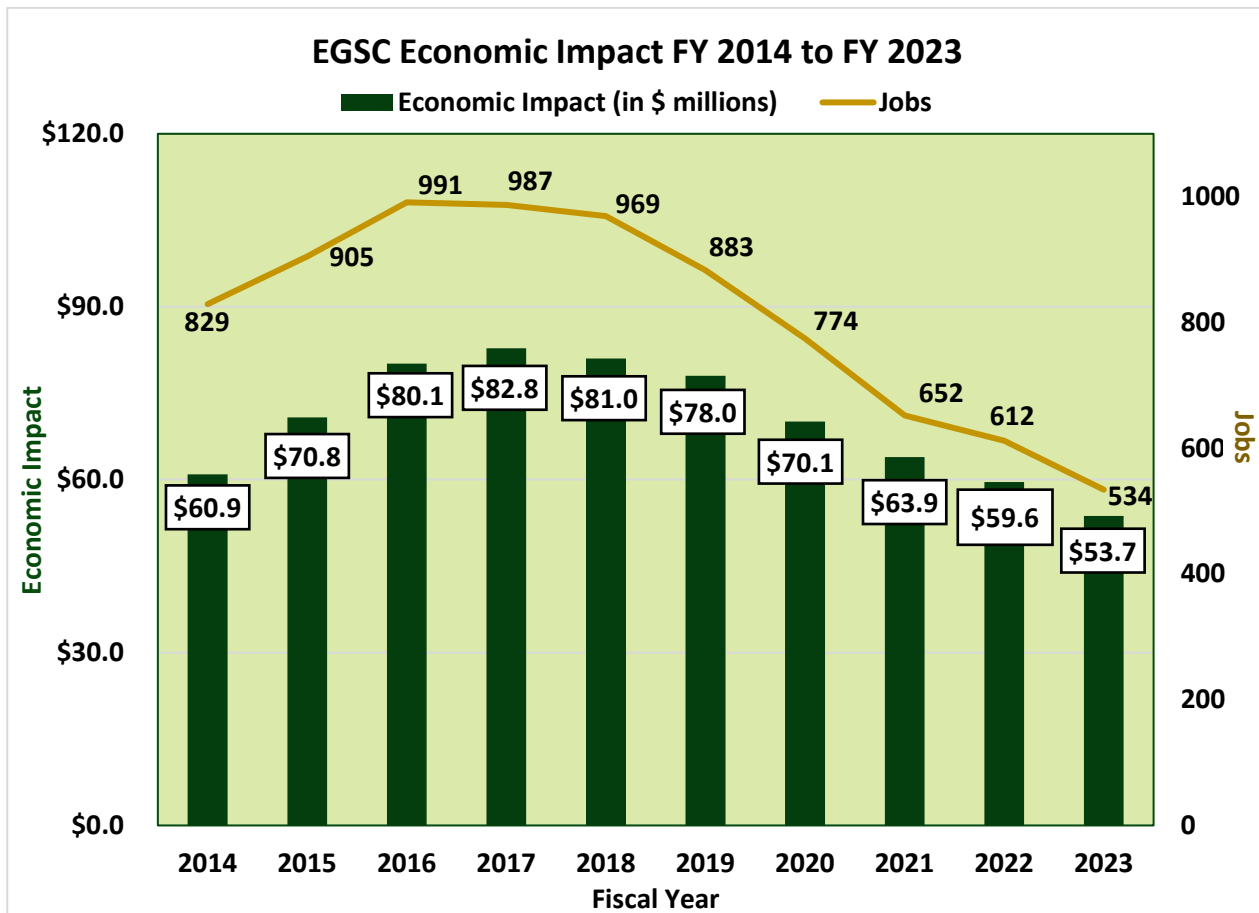
as of 03/07/22

**East Georgia State College Economic Impact: Fiscal Years 2014-2023**

Source: Selig Center for Economic Growth  
Terry College of Business  
The University of Georgia

Year	Output Impact	Jobs
FY 2023	\$53,687,668	534
FY 2022	\$59,599,717	612
FY 2021	\$63,927,337	652
FY 2020	\$70,056,633	774
FY 2019	\$77,977,155	883
FY 2018	\$80,952,494	969
FY 2017	\$82,831,552	987
FY 2016	\$80,140,200	991
FY 2015	\$70,849,180	905
FY 2014	\$60,856,225	829

Service area as defined by Selig Center: Emanuel, Candler, Bulloch, Johnson, Jefferson, Toombs, Treutlen, and Jenkins



**The East Georgia State College Goals and Strategies**

As a unit of the University System of Georgia (USG), EGSC bases its institutional goals on system goals as stated in the *USG Strategic Plan 2029*. Consistent with its role as an access institution within the USG, EGSC’s four institutional goals are presented below.

1. **Student Success:** East Georgia State College provides access to innovative academic programs and engages in college completion initiatives, transforming students and equipping them with tools for success.
2. **Responsible Stewardship:** East Georgia State College uses innovative cost control measures to deliver high quality, affordable degree programs.
3. **Economic Competitiveness:** East Georgia State College is a catalyst for economic development through a variety of initiatives and degree programs that nurture effective student leaders equipped to transform communities in innovative ways.
4. **Community Impact:** East Georgia State College provides a rich array of public service programs through its Sudie A. Fulford Community Center to the communities it serves. In addition, the College hosts a variety of events on its home campus in Swainsboro and at its Augusta and Statesboro Locations.

**USG Goal/EGSC Institutional Goal Alignment and Strategies**

USG/EGSC Goals	Strategy No.	Strategy Description
Goal 1: Student Success	Strategy 1.1	Improve student success in core curriculum courses through focused initiatives
	Strategy 1.2	Increase degrees conferred
	Strategy 1.3	Increase enrollment and retention
Goal 2: Responsible Stewardship	Strategy 2.1	Raise funds to help support students
	Strategy 2.2	Leverage resources to improve student services and outcomes
	Strategy 2.3	Implement information technology initiatives to increase its effectiveness and efficiency
Goal 3: Economic Competitiveness	Strategy 3.1	Become a primary resource for employee development and advancement in the local economy
Goal 4: Community Impact	Strategy 4.1	Engage and enrich the communities in the College’s service area with a variety of events and programs.

Source: EGSC Office of Strategic Planning and Institutional Research

# ADMINISTRATION

University System of Georgia Board of Regents

Regent	Residence	Congressional District	Term of Office
T. Dallas Smith (BOR Chair)	Atlanta	Fifth	2024-2031
David B. Dove (BOR Vice Chair)	Atlanta	Eleventh	2024-2031
Erin Hames	Atlanta	State-at-Large	2023-2030
Samuel D. Holmes	Atlanta	State-at-Large	2019-2026
James M. Hull	Augusta	State-at-Large	2023-2030
Neil L. Pruitt, Jr	Norcross	State-at-Large	2022-2027
Dr. Deep J. Shah	Atlanta	State-at-Large	2024-2027
Patrick C. Jones	Waycross	First	2022-2025
Bàrbara Rivera Holmes	Albany	Second	2018-2025
Mat Swift	Columbus	Third	2024-2031
Cade Joiner	Brookhaven	Fourth	2022-2026
Tom Bradbury	Vinings	Sixth	2024-2029
Richard “Tim” Evans	Alpharetta	Seventh	2019-2026
W. Allen Gudenrath	Macon	Eighth	2018-2025
Jim Syfan	Gainesville	Ninth	2022-2029
Harold Reynolds	Greensboro	Tenth	2020-2027
Everett Kennedy III	Statesboro	Twelfth	2020-2027
Dan Murphy	Atlanta	Thirteenth	2024-2028
Lowery Houston May	Rome	Fourteenth	2020-2027

Source: University System of Georgia Board of Regents

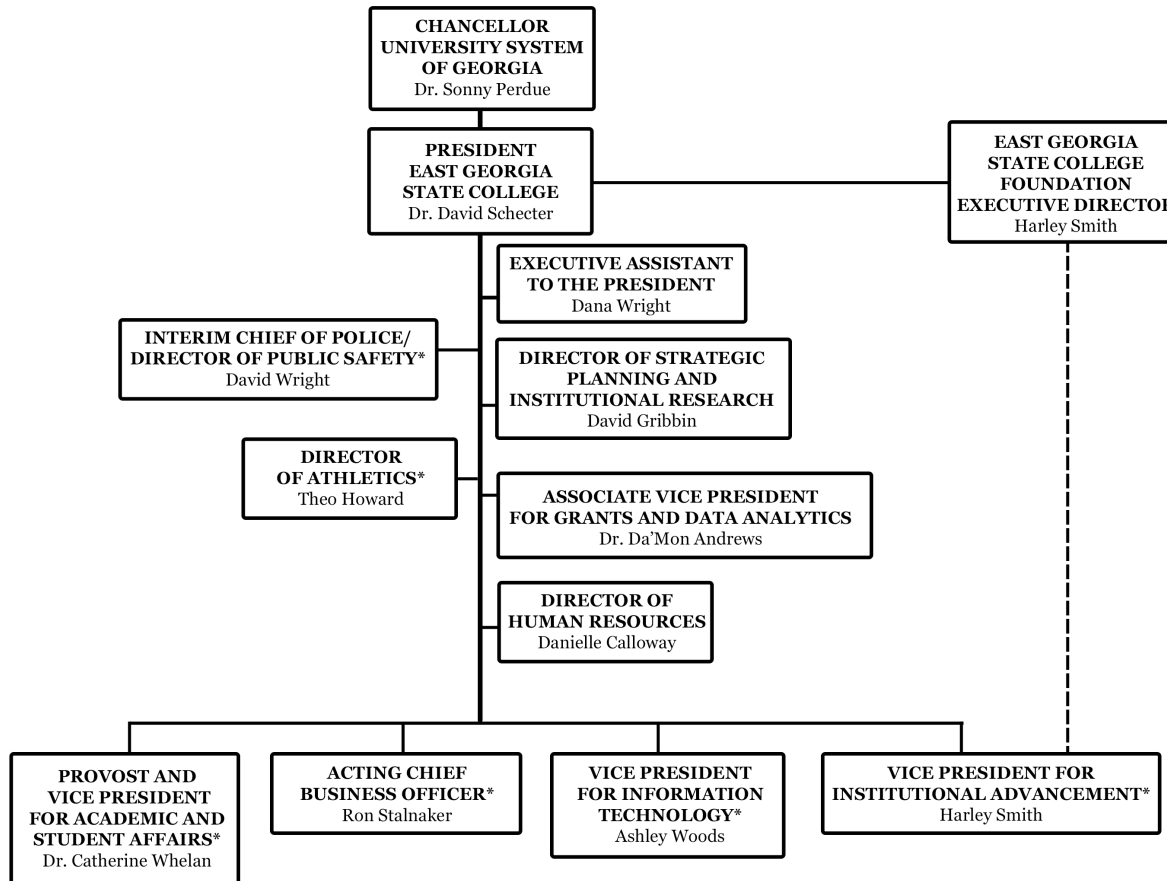
University System of Georgia Administrative Staff 2025

Position	Staff Member
Chancellor	Sonny Perdue
Chief Operating Officer	Teresa McCartney
Chief of Staff & Vice Chancellor for External Affairs	Ashley Jones May
Interim Chief Academic Officer	Costas Spirou
Chief Fiscal Officer/Treasurer	Tracey Cook
Vice Chancellor – Academic Affairs	Dana Nichols
Vice Chancellor – Information Technology Services & Chief Information Officer	Timothy M. Chester
Vice Chancellor – Enrollment Management & Student Affairs	Scot Lingrell
Vice Chancellor – Fiscal Affairs	Jeff Davis
Interim Vice Chancellor – Human Resources	Karin Elliott
Vice Chancellor – Internal Audit, Ethics & Compliance & Chief Audit Officer	Jenna Wiese
Vice Chancellor – Leadership & Institutional Development	Wendi Jenkins
Vice Chancellor – Legal Affairs	Christopher McGraw
Vice Chancellor – Real Estate & Facilities	Sandra L. Neuse
Vice Chancellor – Research & Policy Analysis	Angela Bell
Associate Vice Chancellor – Student and Faculty Success	Jonathan Hull
Associate Vice Chancellor – Strategic Implementation	Rich Loftus
Associate Vice Chancellor – Distance Learning & Innovation	Jon Sizemore
Assistant Vice Chancellor – Academic Library Services & Executive Director for GALILEO	Lucy Harrison
Interim Chief Information Security Officer	Todd Watson
Director of Safety & Security (Chief of Police)	Kerry Stallings
Director of Economic Development	Chris Kidd
Executive Director of Georgia Film Academy	Scott Votaw
State Librarian, Georgia Public Library Service	Julie Walker
Director of Georgia Archives	Christopher Davidson

Source: University System of Georgia Board of Regents

East Georgia State College Organization Charts

## East Georgia State College Organizational Chart



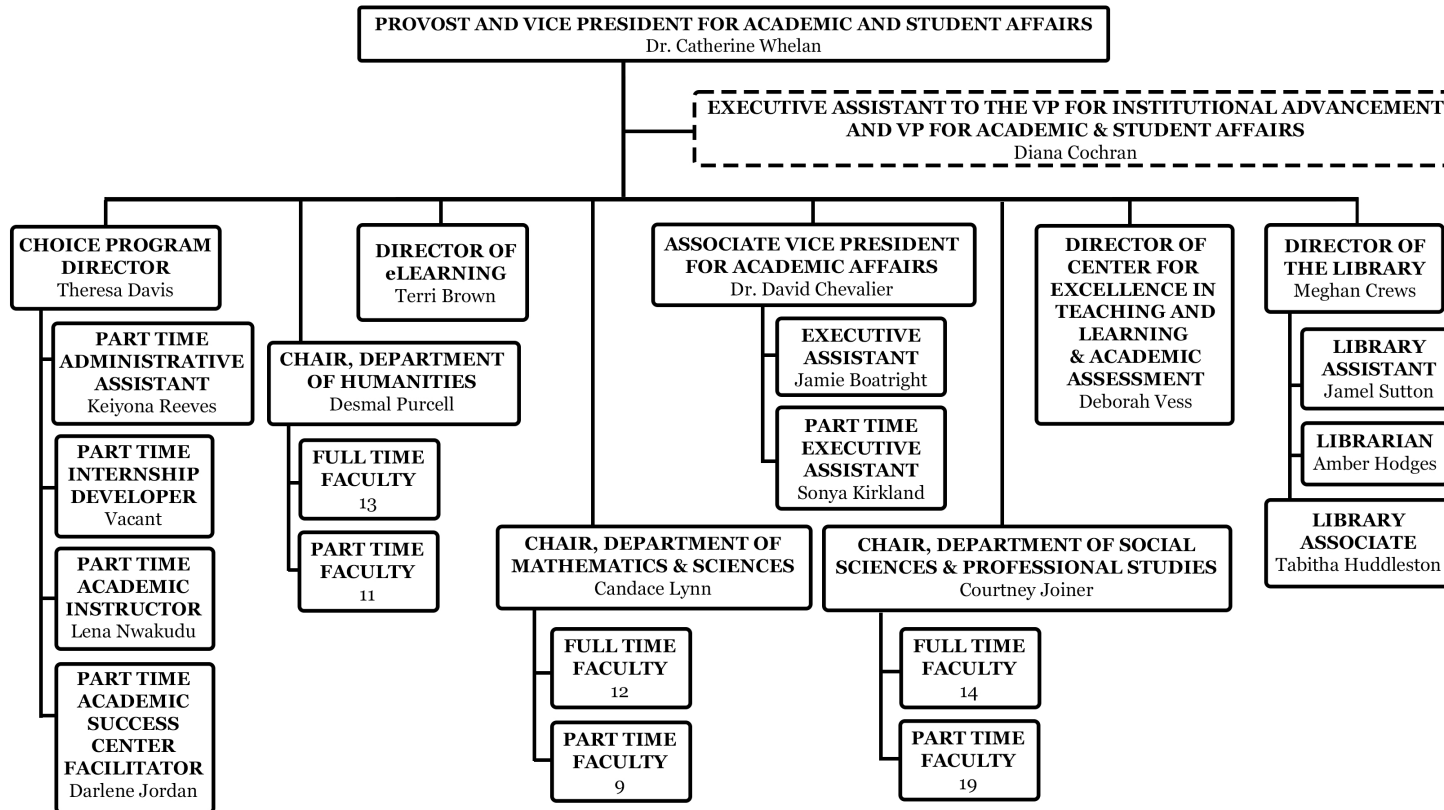
Approved by President's Cabinet January 7, 2025

\*See separate organization chart for each of the above units

Source: Office of the President

East Georgia State College Organization Charts

## East Georgia State College - Academic Affairs Organizational Chart

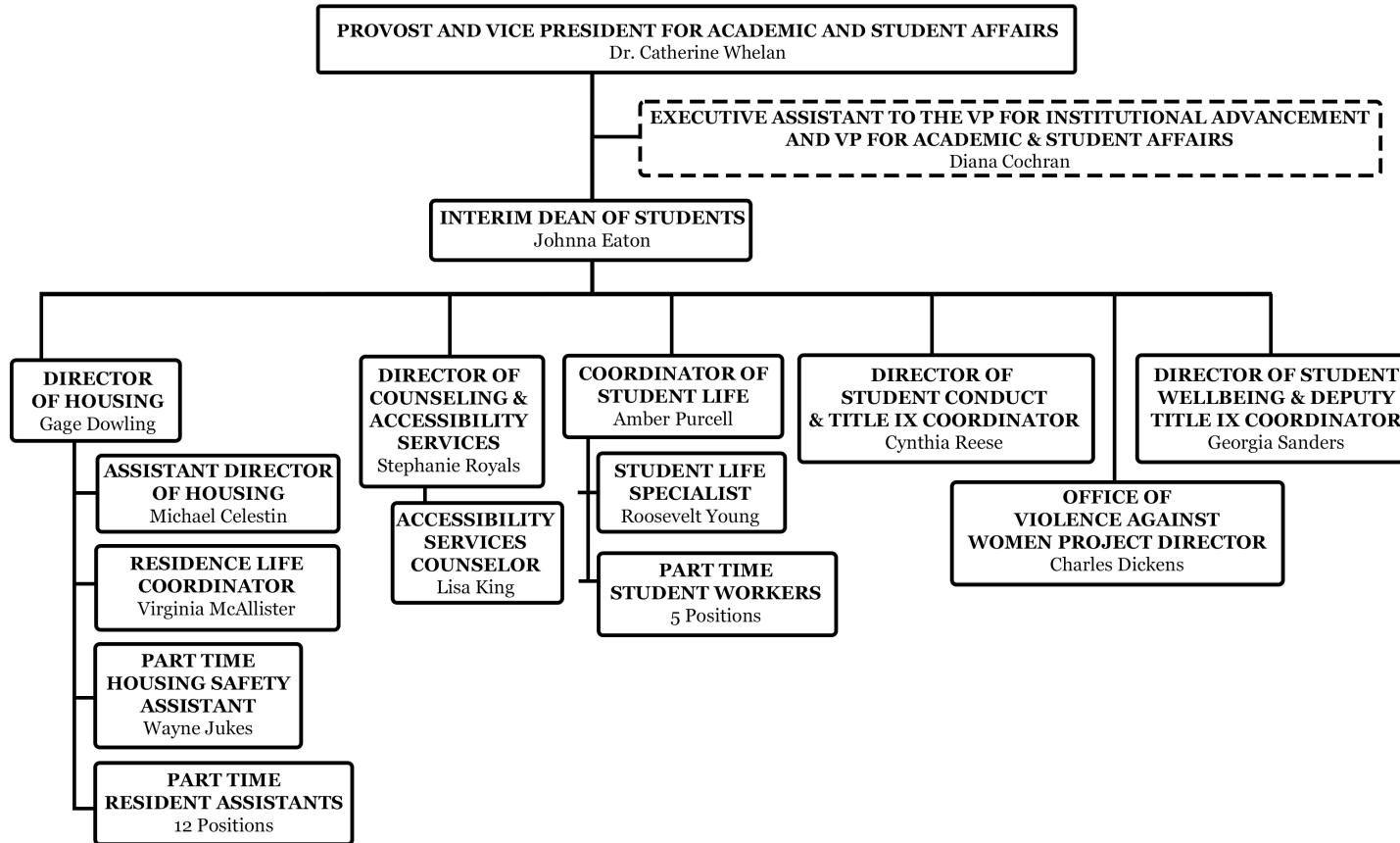


Approved by President's Cabinet January 7, 2025



East Georgia State College Organization Charts

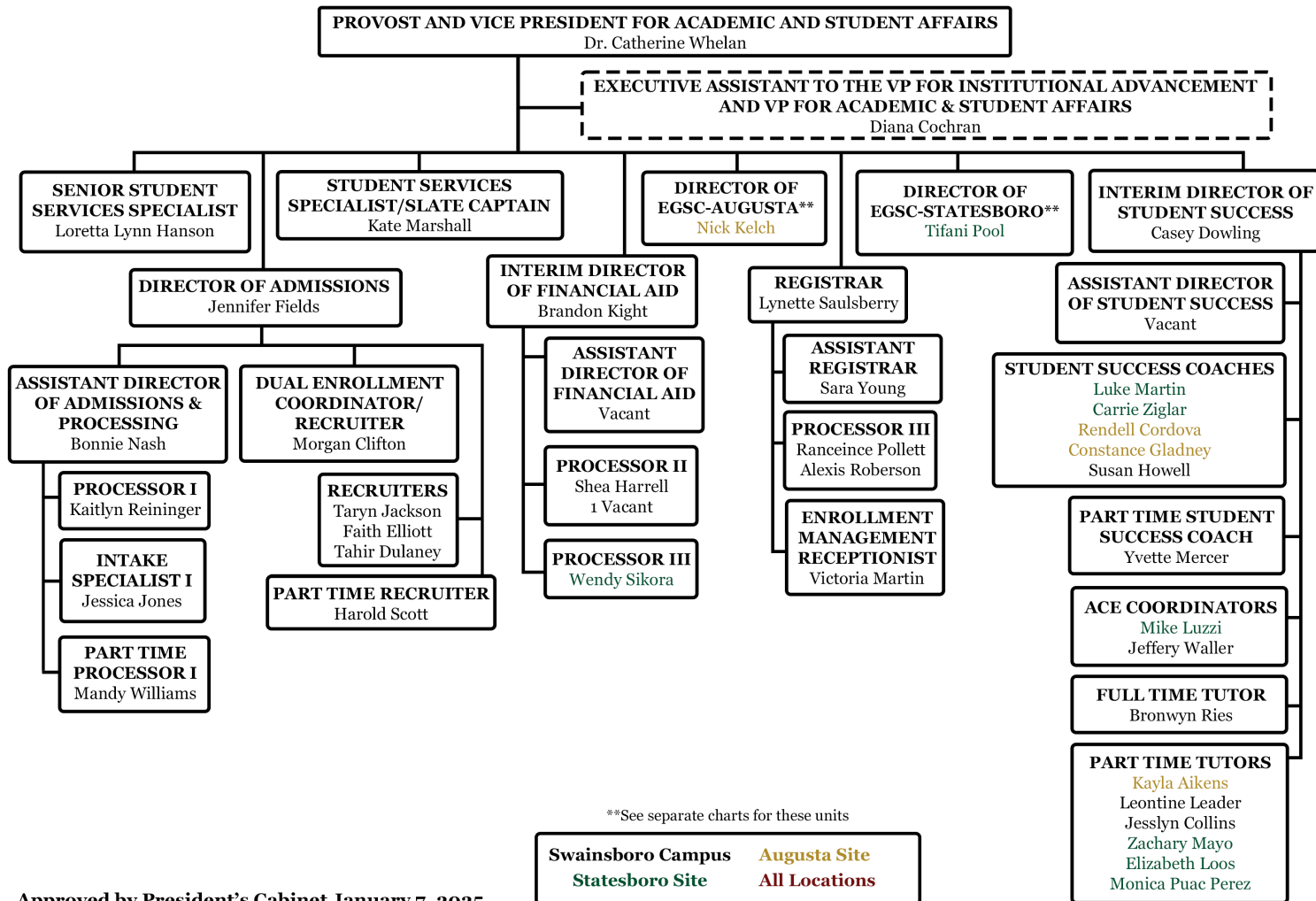
## East Georgia State College - Student Affairs Organizational Chart



Approved by President's Cabinet January 7, 2025

East Georgia State College Organization Charts

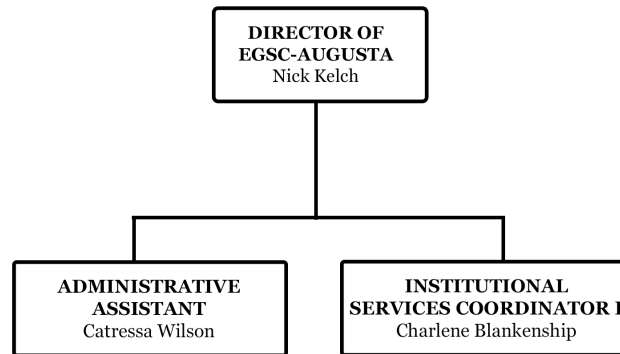
## East Georgia State College - Enrollment Management Organizational Chart



Approved by President's Cabinet January 7, 2025

East Georgia State College Organization Charts

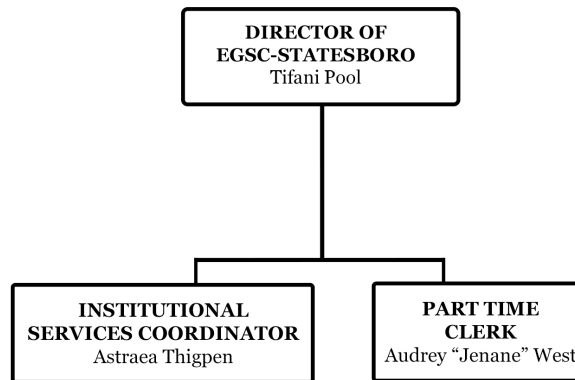
## East Georgia State College - Augusta Organizational Chart



Approved by President's Cabinet January 7, 2025

East Georgia State College Organization Charts

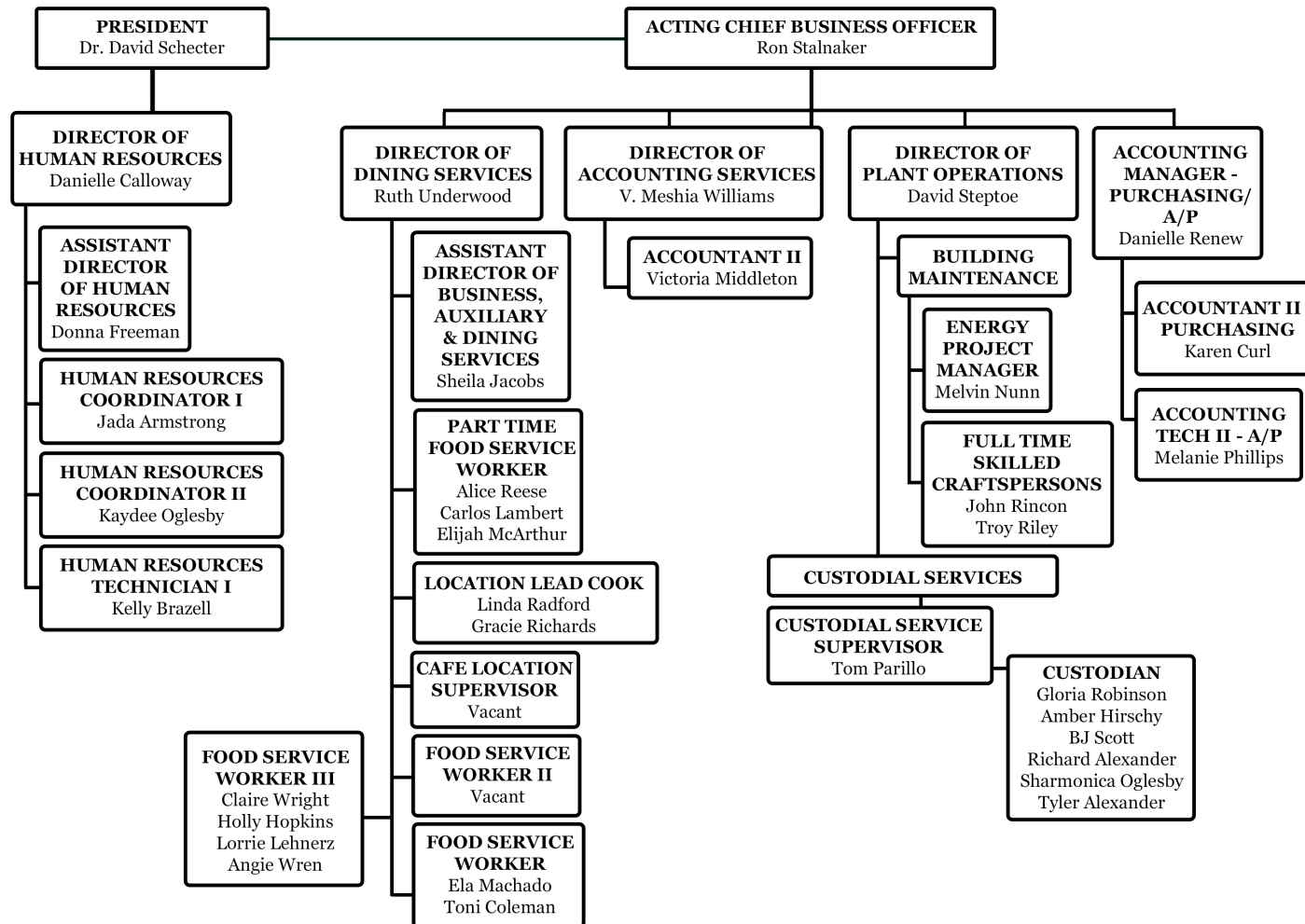
## East Georgia State College - Statesboro Organizational Chart



Approved by President's Cabinet January 7, 2025

East Georgia State College Organization Charts

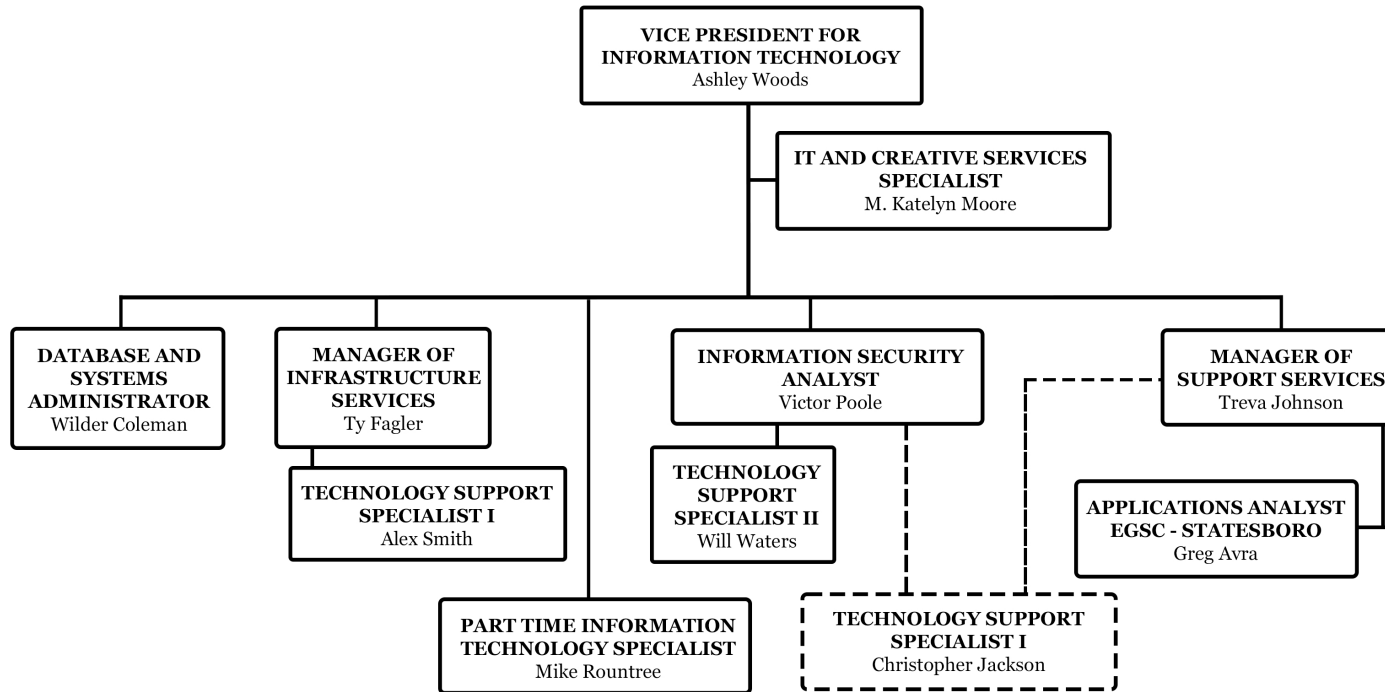
## East Georgia State College - Business Affairs Organizational Chart



Approved by President's Cabinet January 7, 2025

East Georgia State College Organization Charts

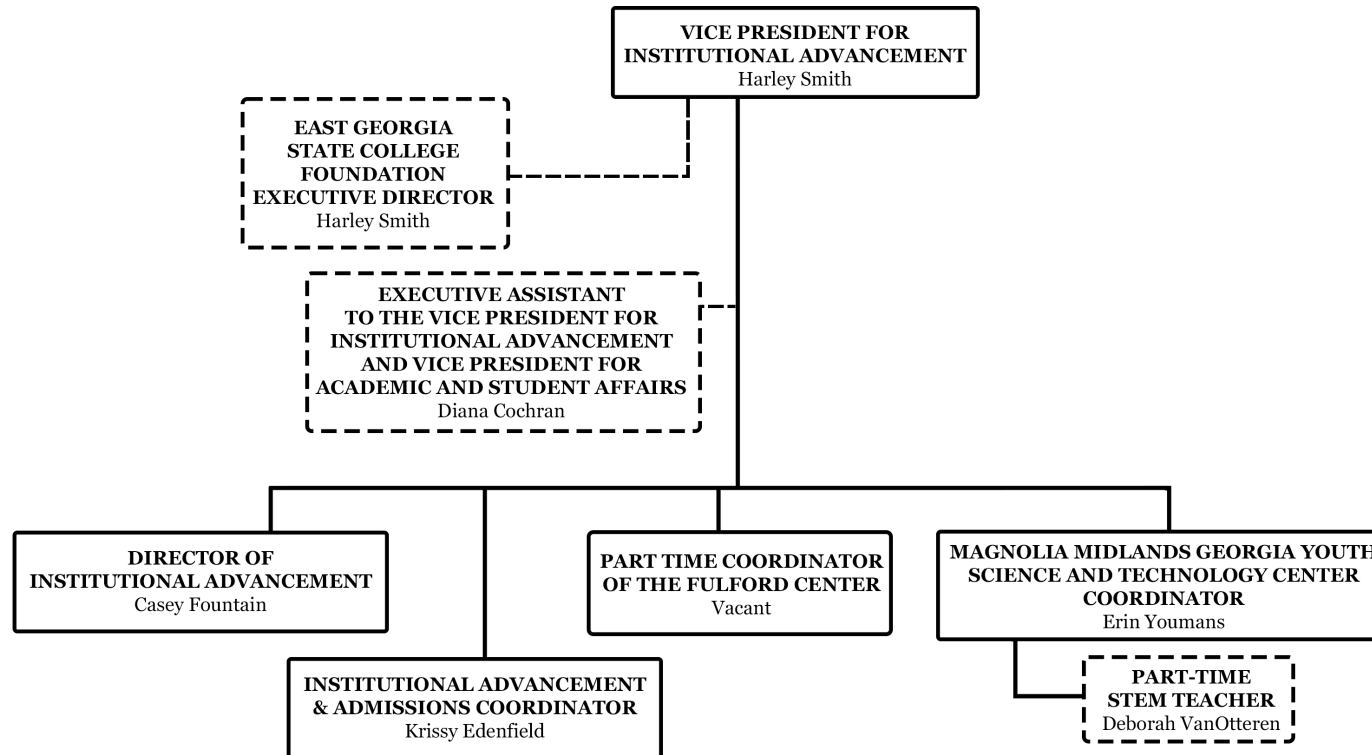
## East Georgia State College - Information Technology Organizational Chart



Approved by President's Cabinet January 7, 2025

East Georgia State College Organization Charts

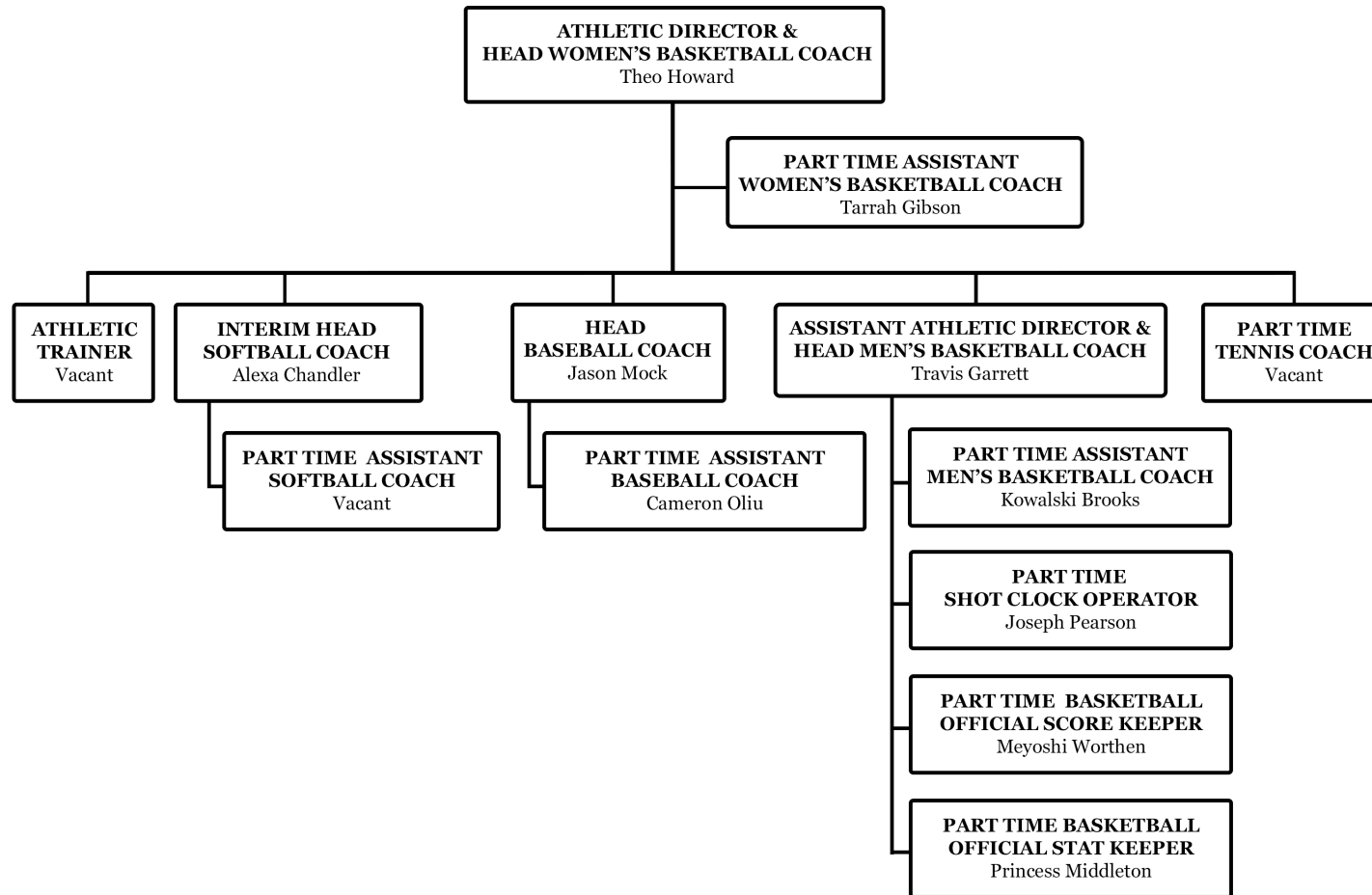
## East Georgia State College - Institutional Advancement Organizational Chart



Approved by President's Cabinet January 7, 2025

East Georgia State College Organization Charts

## East Georgia State College - Athletic Department Organizational Chart

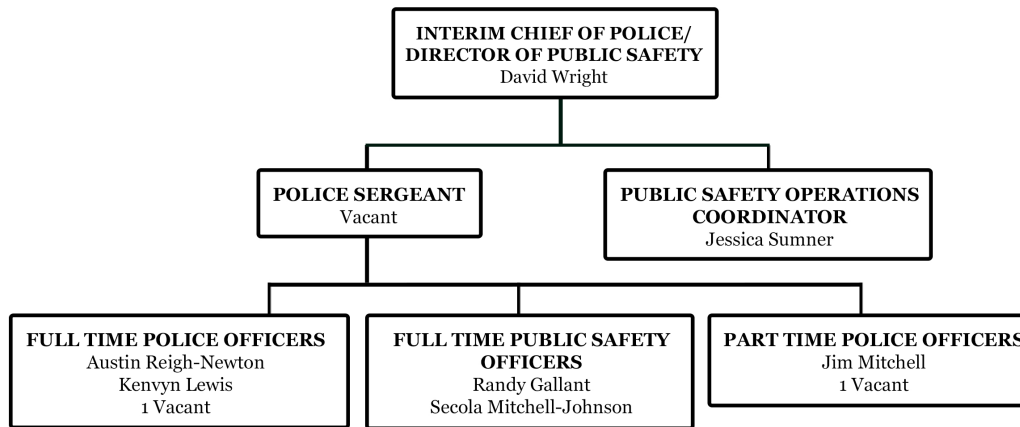


Approved by President's Cabinet January 7, 2025



East Georgia State College Organization Charts

## East Georgia State College - Police Department Organizational Chart



Approved by President's Cabinet January 7, 2025

East Georgia State College Cabinet:

David Schechter	President of the College
Da'Mon Andrews	Associate Vice President for Grants and Data Analytics
Danielle Calloway	Director of Human Resources
Maura Copeland	Acting Chief of Staff and Legal Counsel
David Gribbin	Director of Strategic Planning and Institutional Research
Theo Howard	Athletics Director
Nick Kelch	Director of EGSC Augusta
Tifani Pool	Director of EGSC Statesboro
Harley Smith	Vice President for Institutional Advancement
Ronald Stalnaker	Acting Chief Business Officer
Catherine Whelan	Provost/Vice President for Academic and Student Affairs
Ashley Woods	Vice President for Information Technology
David Wright	Interim Chief of Police and Director of Public Safety

The East Georgia State College Foundation: FY 2024-25 Trustees

Last Name	First Name	Title/Alumnus	Status
<b>Executive Board</b>			
McNeely	Richard	Chair/Alumnus	Elected
Gray	Milton	Vice-Chair/Alumnus	Elected
Vacant		Past Chair	Elected
Donaldson	Matt	Secretary/Alumnus	Elected
Stalnaker	Ronald	Treasurer	Ex-officio-voting
Schecter	Dr. David	President of EGSC	Ex-officio-voting
Smith	Harley	Executive Director	Ex-officio-voting
<b>Active Members</b>			
Andrews	Brandon		Elected
Bertoch	Lisa	Alumnus	Elected
Conway	Olivia	Alumnus	Elected
Denmark	Jennie Wren		Elected
Derden	Dr. John		Elected
Donaldson	Matt	Secretary, Alumnus	Elected
Frye	Zac	Alumni	Elected
Gilmer	Elizabeth		Elected
Gray	Milton	Vice-Chair, Alumnus	Elected
Johnson	Wade		Elected
McNeely	Richard	Chair - Alumnus	Elected
Patterson	Ben		Elected
Porter	Juanita		Elected
Ray	Harriet		Elected
Sasser	Dr. Bobby		Elected
Terwilliger	Toni	Alumnus	Elected
Walden	Anson		Elected
Warnock	Ken	Alumnus	Elected

Updated February 2025

Source: EGSC Office of Institutional Advancement

# ADMISSIONS

**Applied, Accepted and Registered Fall Semester 2015-2024**

Fall Semester	Applied	Accepted	Registered	% of Applied Accepted	% of Applied Registered	% of Accepted Registered
2015	3,083	1,785	1,422	57.9%	46.1%	79.7%
2016	3,043	1,843	1,520	60.6%	50.0%	82.5%
2017	2,667	1,666	1,311	62.5%	49.2%	78.7%
2018	3,040	2,457	1,498	80.8%	49.3%	61.0%
2019	3,167	2,338	1,335	73.8%	42.2%	57.1%
2020	3,365	2,573	1,044	76.5%	31.0%	40.6%
2021	2,111	1,752	1,123	82.9%	53.2%	64.1%
2022	2,484	1,886	1,120	75.9%	45.1%	59.4%
2023	2,301	1,735	895	75.4%	38.9%	51.6%
2024	2,367	1,789	1,284	75.6%	54.2%	71.8%

Source: EGSC Office of Admissions

**Beginning Freshmen: Fall Semester 2015-2024**

Fall Semesters	2015	2016	2017	2018	2019	2020	2021	2022	2023	2024
Beginning Freshmen	1,095	1,006	954	1,086	1,037	678	654	675	531	617

**Mean Scholastic Aptitude Test (Old SAT) Scores for Beginning Freshmen: Fall Semester 2013-2021**

Fall Semesters	2013	2014	2015	2016	2017	2018	2019	2020	2021
Old SAT Average	870	873	864	864	856	877	915	857	993

**Mean Scholastic Aptitude Test (New SAT) Scores for Beginning Freshmen: Fall Semester 2016-2024**

Fall Semesters	2016	2017	2018	2019	2020	2021	2022	2023	2024
New SAT Average	47	47	48	47	48	51	48	47	51

Source: EGSC Office of Strategic Planning and Institutional Research

**Georgia High Schools of Beginning Freshmen: Fall 2024**

High Schools	Augusta	Statesboro	Swainsboro	Total
Statesboro High School		25	4	29
Swainsboro High School			27	27
Greenbrier High School	16	2		18
Effingham County High School		8	8	16
Cross Creek High School	10		5	15
Academy Of Richmond County	8	2	4	14
GED/HiSet/TASC Score Report		4	10	14
Southeast Bulloch County Hs		11	3	14
Toombs County High School		5	9	14
Burke County High School	5	2	6	13
Jefferson County High School	1	1	11	13
Johnson County High School			13	13
Lakeside High School-Evans	8	2	3	13
Westside High School	8		5	13
Grovetown High School	8	2	2	12
South Effingham High School		7	5	12
Butler High School	5		6	11
Screven County High School		5	6	11
Thomson High School	2	1	8	11
Vidalia High School		3	8	11
Glenn Hills High School	6	1	3	10
Treutlen High School			10	10
<b>Subtotal: 22 High Schools, 10 or more</b>				<b>314</b>
<b>Subtotal: 224 High Schools, fewer than 10</b>				<b>303</b>
<b>Total: 246 High Schools</b>				<b>617</b>

Source: EGSC Office of Strategic Planning and Institutional Research

# STUDENT FINANCIAL INFORMATION

**Semester Tuition and Fees Fall 2024 – Spring 2025**

**In State Tuition and Fees**

Credit Hours	In State Tuition	EGSC Augusta †		EGSC Statesboro ‡		Swainsboro	
		Fees	Tuition & Fees	Fees	Tuition & Fees	Fees	Tuition & Fees
15	1,515.00	835.00	2,350.00	927.00	2,442.00	238.00	1,753.00
14	1,414.00	835.00	2,249.00	927.00	2,341.00	238.00	1,652.00
13	1,313.00	835.00	2,148.00	927.00	2,240.00	238.00	1,551.00
12	1,212.00	835.00	2,047.00	927.00	2,139.00	238.00	1,450.00
11	1,111.00	835.00	1,946.00	927.00	2,038.00	238.00	1,349.00
10	1,010.00	835.00	1,845.00	927.00	1,937.00	238.00	1,248.00
9	909.00	835.00	1,744.00	927.00	1,836.00	238.00	1,147.00
8	808.00	835.00	1,643.00	927.00	1,735.00	238.00	1,046.00
7	707.00	835.00	1,542.00	927.00	1,634.00	238.00	945.00
6	606.00	835.00	1,441.00	927.00	1,533.00	238.00	844.00
5	505.00	835.00	1,340.00	927.00	1,432.00	238.00	743.00
4	404.00	835.00	1,239.00	927.00	1,331.00	238.00	642.00
3	303.00	725.00	1,028.00	150.00	453.00	95.00	398.00
2	202.00	725.00	927.00	150.00	352.00	95.00	297.00
1	101.00	725.00	826.00	150.00	251.00	95.00	196.00

**EGSC Augusta †:** Fees include \$675 Augusta University – Summerville fee at every credit hour level

**EGSC Statesboro ‡:** Fees include \$667 Georgia Sothern University fee for 4 or more credit hours

**Out of State Tuition and Fees**

Credit Hours	Out of State Tuition	EGSC Augusta †		EGSC Statesboro ‡		Swainsboro	
		Fees	Tuition & Fees	Fees	Tuition & Fees	Fees	Tuition & Fees
15	5,865.00	835.00	6,700.00	927.00	6,792.00	238.00	6,103.00
14	5,474.00	835.00	6,309.00	927.00	6,401.00	238.00	5,712.00
13	5,083.00	835.00	5,918.00	927.00	6,010.00	238.00	5,321.00
12	4,692.00	835.00	5,527.00	927.00	5,619.00	238.00	4,930.00
11	4,301.00	835.00	5,136.00	927.00	5,228.00	238.00	4,539.00
10	3,910.00	835.00	4,745.00	927.00	4,837.00	238.00	4,148.00
9	3,519.00	835.00	4,354.00	927.00	4,446.00	238.00	3,757.00
8	3,128.00	835.00	3,963.00	927.00	4,055.00	238.00	3,366.00
7	2,737.00	835.00	3,572.00	927.00	3,664.00	238.00	2,975.00
6	2,346.00	835.00	3,181.00	927.00	3,273.00	238.00	2,584.00
5	1,955.00	835.00	2,790.00	927.00	2,882.00	238.00	2,193.00
4	1,564.00	835.00	2,399.00	927.00	2,491.00	238.00	1,802.00
3	1,173.00	725.00	1,898.00	150.00	1,323.00	95.00	1,268.00
2	782.00	725.00	1,507.00	150.00	932.00	95.00	877.00
1	391.00	725.00	1,116.00	150.00	541.00	95.00	486.00



**EGSC Six SACSCOC Peer Colleges**

Atlanta Metropolitan State College (Atlanta, GA)

Florida Gateway College (Lake City, FL)

Georgia Highlands College (Rome, GA)

Lake-Sumter State College (Leesburg, FL)

Santa Fe College (Gainesville, FL)

South Georgia State College (Douglas, GA)

**EGSC Fifteen IPEDS Peer Colleges:**

Atlanta Metropolitan State College (Atlanta, GA)

Bismarck State College (Bismarck, ND)

Centralia College (Centralia, WA)

Clover Park Technical College (Lakewood, WA)

Columbia Basin College (Pasco, WA)

Florida Gateway College (Lake City, FL)

Georgia Highlands College (Rome, GA)

Kent State University at Ashtabula (Ashtabula, OH)

Kent State University at Tuscarawas (New Philadelphia, OH)

Lake-Sumter State College (Leesburg, FL)

Ohio University-Chillicothe Campus (Chillicothe, OH)

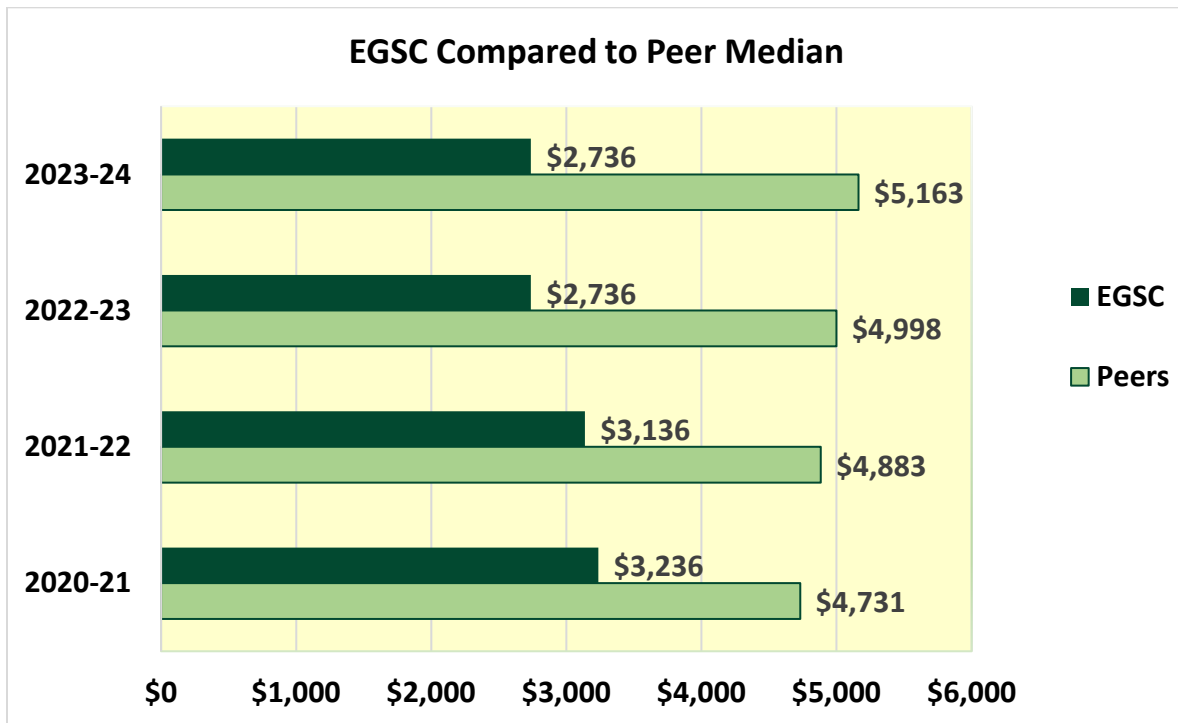
Ohio University-Eastern Campus (Saint Clairsville, OH)

Santa Fe College (Gainesville, FL)

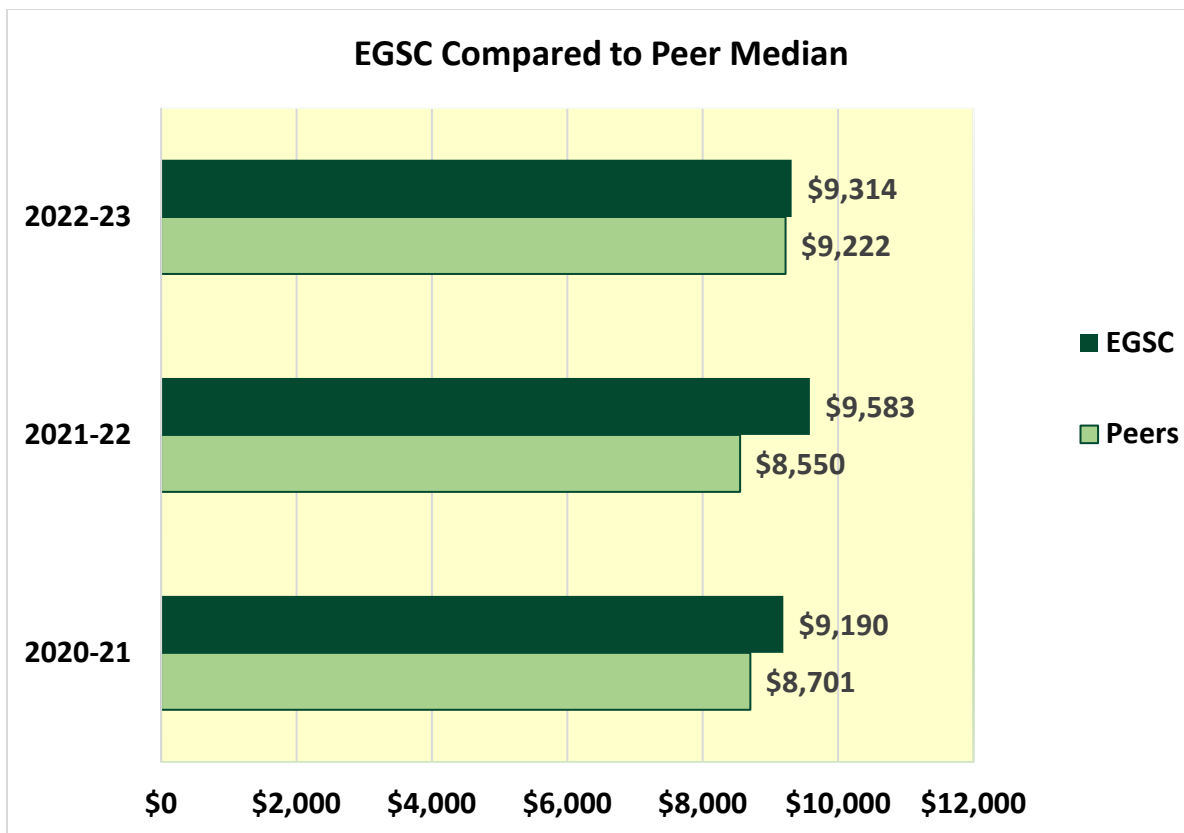
South Georgia State College (Douglas, GA)

Yakima Valley College (Yakima, WA)

Academic Year Tuition and Fees for Full-Time, First Time Undergraduates

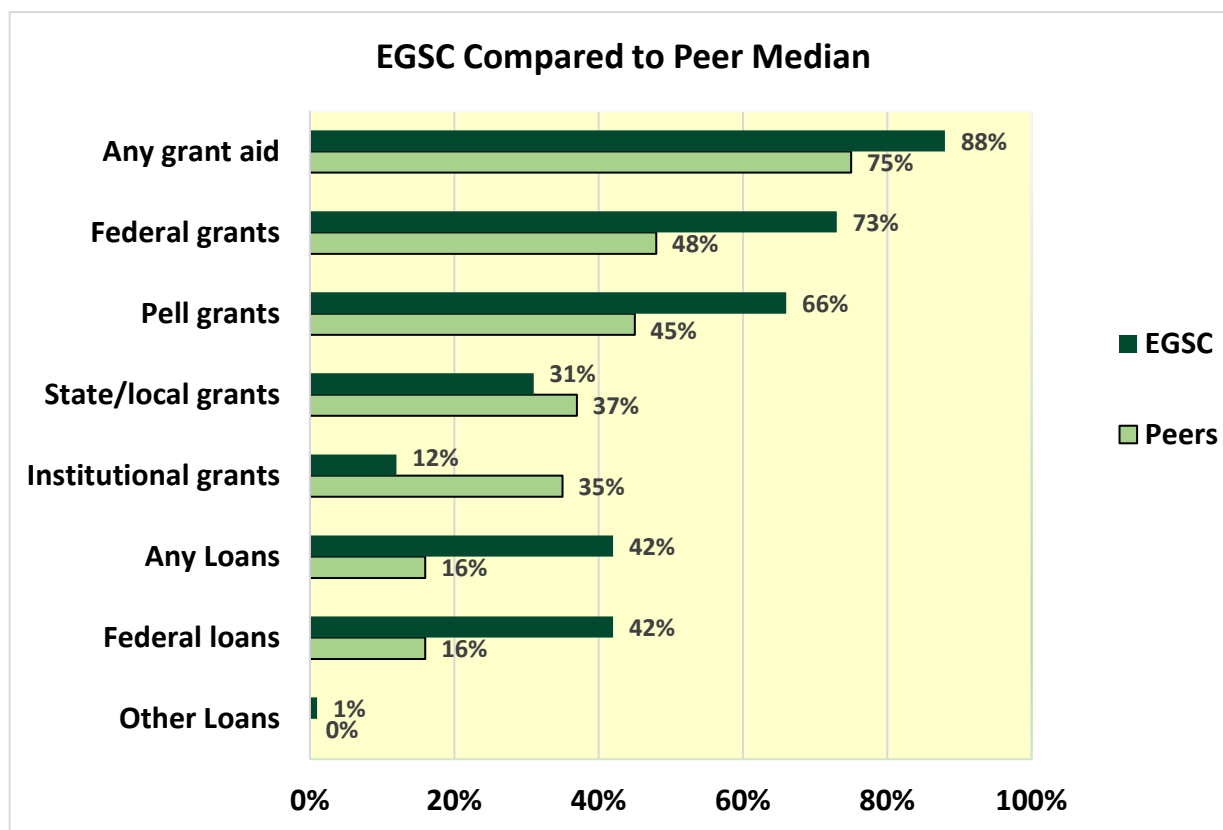


Academic Year Average Net Price of Attendance for Full-Time, First Time Undergraduates

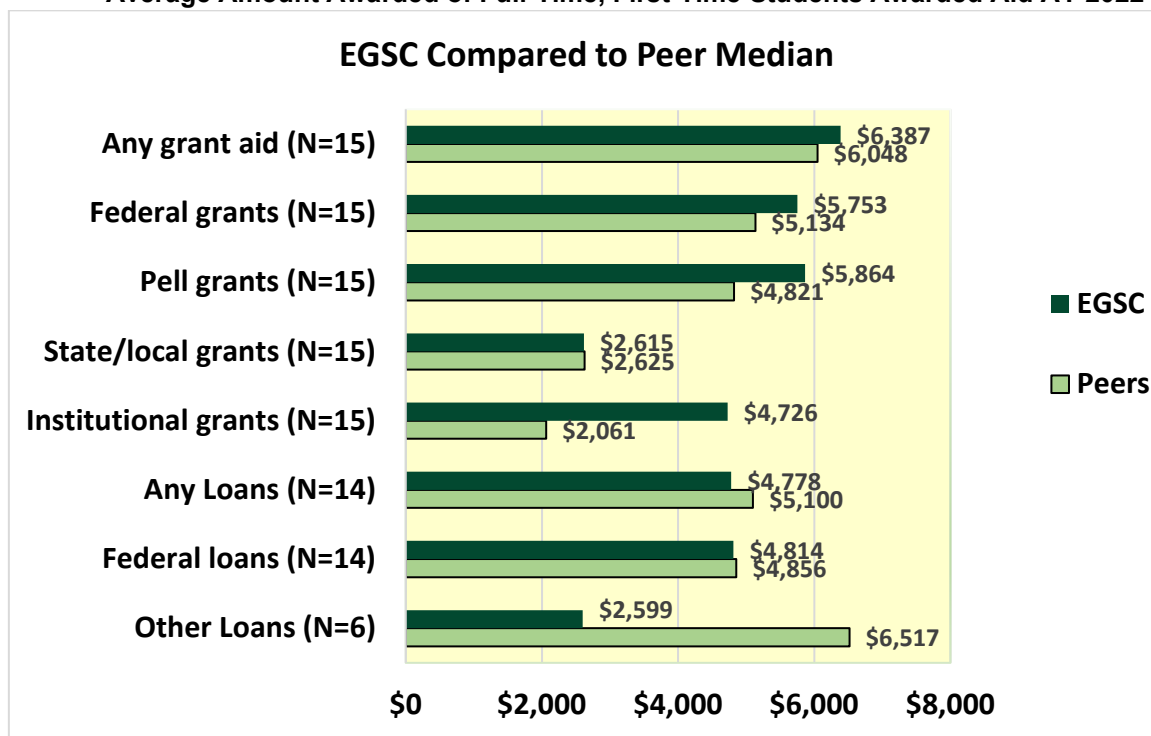


Source: IPEDS (Integrated Postsecondary Education Data System)

Percent of Full-Time, First-Time Students Awarded Aid AY 2022-23



**Average Amount Awarded of Full-Time, First-Time Students Awarded Aid AY 2022-23**



Source: IPEDS (Integrated Postsecondary Education Data System)

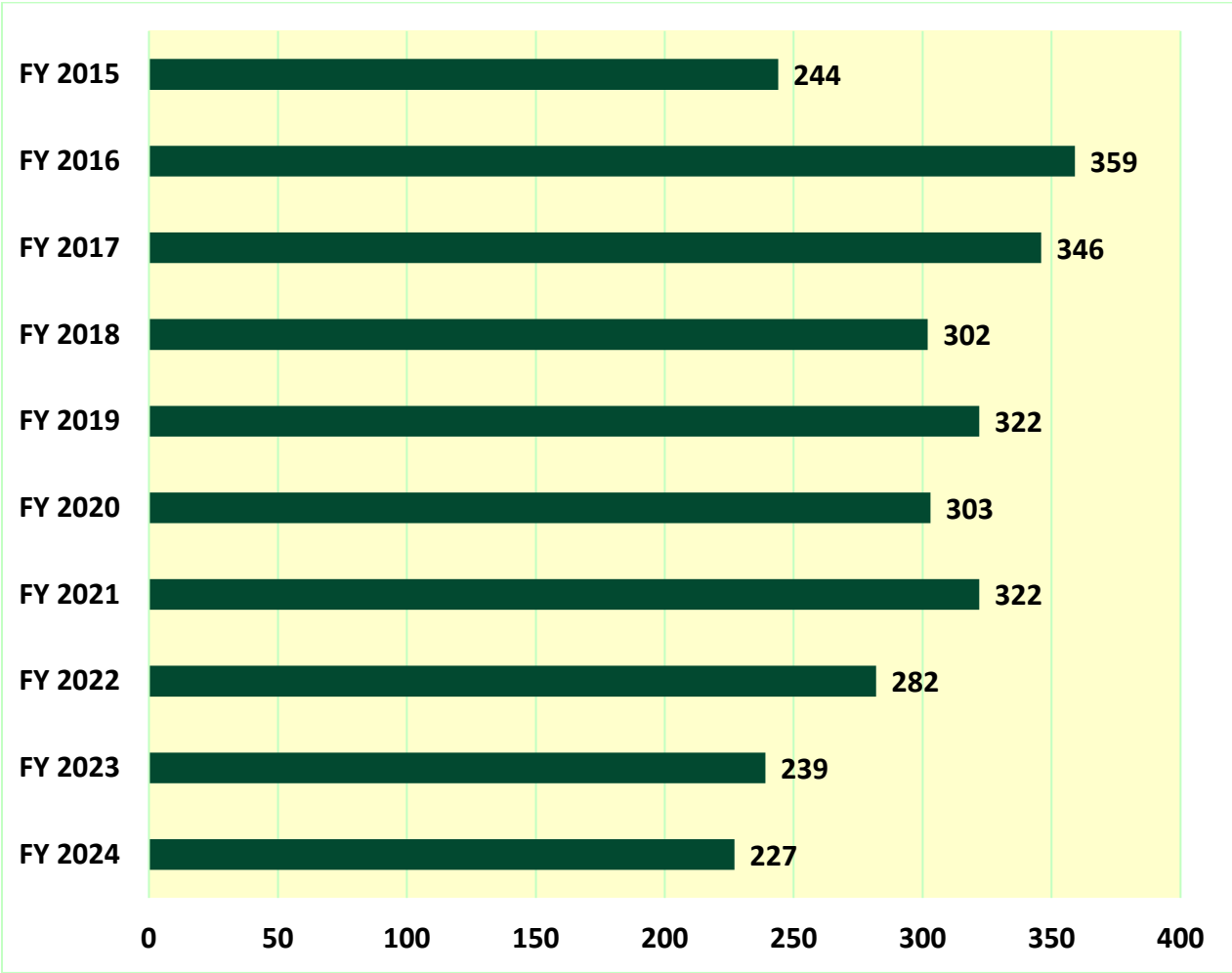
# ACADEMIC INFORMATION

Associate and Baccalaureate Degree List

with Classification of Instructional Program (CIP) Codes

Degree Acronym	CIP CODE	Degree Level	Degree Description
<b>Continuing Degree Programs</b>			
AA	13041401	Associate	Associate of Arts in Elementary Education
AA	24010101	Associate	Associate of Arts in Liberal Arts
AA	45010101	Associate	Associate of Arts in Social Sciences
AS	30180101	Associate	Associate of Science in Natural Sciences
AS	52020101	Associate	Associate of Science in Business Administration
<b>New Degree Program</b>			
BBA	52020101	Bachelor	Bachelor of Business Administration (Spring 2025)
<b>USG eMajors</b>			
AS	30710400	Associate	Associate of Science in Financial Technology (Spring 2023)
BS	43010300	Bachelor	Bachelor of Science with a Major in Criminal Justice (Fall 2023)
BSOL	52021300	Bachelor	Bachelor of Science Degree in Organizational Leadership (Spring 2024)
<b>Degree Programs Closed to New Admissions August 11, 2021</b>			
AA	09010001	Associate	Associate of Arts in Communication Arts
AA	23010101	Associate	Associate of Arts in English
AA	42010101	Associate	Associate of Arts in Psychology
AA	43010401	Associate	Associate of Arts in Criminal Justice
AA	43020202	Associate	Associate of Arts in Fire and Emergency Services Administration
AA	45100101	Associate	Associate of Arts in Political Science
AA	45110101	Associate	Associate of Arts in Sociology
AA	50070101	Associate	Associate of Arts in Art
AA	54010101	Associate	Associate of Arts in History
AS	26010101	Associate	Associate of Science in Biology
AS	27010101	Associate	Associate of Science in Mathematics
AS	36010101	Associate	Associate of Science in Recreation
AS	40050101	Associate	Associate of Science in Chemistry
BA	43020201	Bachelor	Bachelor of Arts in Fire and Emergency Services Administration
BS	26010101	Bachelor	Bachelor of Science with a Major in Biology
BS	51380105	Bachelor	Bachelor of Science with a Major in Nursing, RN to BSN
CER0	50060501	Certificate (< 1 Year)	Certificate of Less than One Year in Digital Photography

EGSC Degrees Conferred FY 2015 to FY 2024



Source: EGSC Office of Strategic Planning and Institutional Research

Degrees Conferred by Academic Program FY 2019 – FY 2024

CIP Code and Degree	Academic Program	FY 2019	FY 2020	FY 2021	FY 2022	FY 2023	FY 2024
24.0101. Associate of Arts	Liberal Arts (Core Curriculum)	163	151	136	110	90	114
42.0101. Associate of Arts	Psychology**	31	38	37	29	27	-
52.0201. Associate of Science	Business Administration*	25	31	35	24	32	47
51.3801. Bachelor of Science	Nursing, RN to BSN**	22	11	10	19	2	-
13.0414. Associate of Arts	Elementary Education*†	14	17	37	36	27	27
45.0101 Associate of Arts	Social Sciences	-	-	-	-	11	34
45.1101. Associate of Arts	Sociology**	13	8	9	5	3	-
43.0104. Associate of Arts	Criminal Justice**	11	9	19	18	15	-
54.0101. Associate of Arts	History**	10	1	6	2	2	-
40.0501. Associate of Science	Chemistry**	6	5	5	3	-	-
45.1001. Associate of Arts	Political Science**	5	3	1	2	-	-
50.0701. Associate of Arts	Art**	4	6	7	5	2	-
26.0101. Associate of Science	Biology**	4	5	7	6	1	-
26.0101. Bachelor of Science	Biology	2	3	3	6	4	-
30.1801 Associate of Science	Natural Sciences	-	-	-	-	3	5
43.0202. Associate of Arts	FESA**‡	2	3	2	6	5	-
43.0202. Bachelor of Arts	FESA**‡	3	7	2	7	13	-
23.0101. Associate of Arts	English**	3	1	1	-	-	-
09.0100. Associate of Arts	Communication Arts**	2	3	4	1	1	-
27.0101. Associate of Science	Mathematics**	2	1	1	3	1	-
<b>Total</b>		<b>322</b>	<b>303</b>	<b>322</b>	<b>282</b>	<b>239</b>	<b>227</b>
Associate Degrees		295	282	307	250	220	227
Bachelor Degrees		27	21	15	32	19	0

\*Academic Programs begun Fall Semester 2017

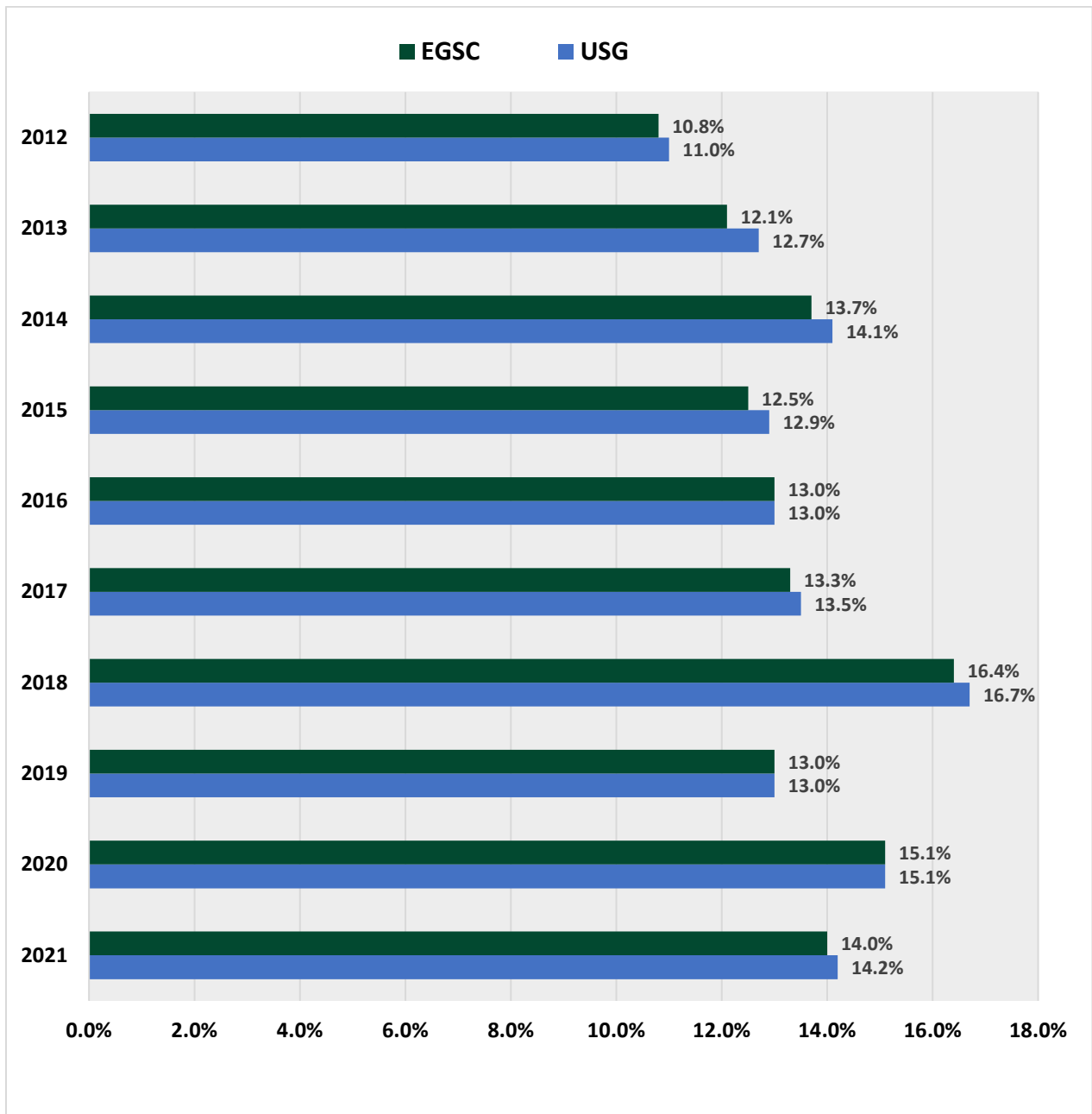
\*\* Academic Programs begun Fall Semester 2017 and closed to new admissions August 11, 2021

†Formally Early Childhood Education

‡Fire and Emergency Services Administration

Source: EGSC Office of Strategic Planning and Institutional Research

EGSC/USG 3 Year Graduation Rates for First-Time, Full-Time Fall 2012 – 2021 Cohorts



Source: University System of Georgia Office of Research and Policy Analysis



**Distribution of Grades by Class: Academic Year 2023-24**

Fall 2023	A	B	C	D	F	I	IP	W	WF	Total
Freshman	23.4%	20.0%	16.3%	7.2%	22.8%	0.1%	3.5%	5.7%	1.2%	100.0%
Sophomore	33.4%	25.4%	17.4%	6.0%	12.1%	0.0%	0.2%	5.4%	0.3%	100.0%
Junior	46.3%	29.7%	12.5%	4.3%	3.0%	0.0%	0.2%	3.9%	0.0%	100.0%
Senior	47.6%	19.0%	7.1%	11.9%	7.1%	0.0%	0.0%	7.1%	0.0%	100.0%
Overall	27.6%	22.0%	16.3%	6.7%	18.6%	0.1%	2.4%	5.5%	0.8%	100.0%

Spring 2024	A	B	C	D	F	I	IP	W	WF	Total
Freshman	22.0%	17.9%	16.3%	7.6%	24.3%	0.3%	3.3%	7.8%	0.4%	100.0%
Sophomore	33.7%	25.5%	17.7%	6.9%	9.5%	0.2%	0.2%	6.2%	0.1%	100.0%
Junior	43.8%	27.3%	16.4%	3.8%	3.5%	0.2%	0.0%	4.8%	0.3%	100.0%
Senior	56.3%	12.5%	16.7%	8.3%	2.1%	0.0%	0.0%	4.2%	0.0%	100.0%
Overall	28.3%	21.2%	16.7%	7.0%	17.3%	0.3%	2.0%	7.0%	0.3%	100.0%

Source: EGSC Office of Strategic Planning and Institutional Research

**Participation in Education Abroad at the East Georgia State College:  
Academic Years 2009-10 through 2018-19 (Source: EGSC Study Abroad Director)**

EGSC Study Abroad Program (interrupted by COVID-19 in 2020)	No. Students 2010-2019
<b>EGSC Study Abroad Students by Location</b>	
Costa Rica (UGA Campus)	56
Italy	6
Paris (European Council)	2
Cuba	1
South Korea (Council on International Education Exchange)	1
<b>EGSC Study Abroad Students by Ethnicity</b>	
White (Non-Hispanic)	53
African American	10
Hispanic	3

EGSC participated in the USG International Education Council in AY 2023-24.

**Library Resources FY 2022-23 (Source: IPEDS EGSC Academic Libraries Spring 2024 Survey)**

Library Collections/Circulation	Physical Collection	Digital/Electronic Collection
Books	47,422	618,944
Databases	-	262
Media	1,388	38,594
Serials	35	41,807
Total Collection	48,845	699,607
Library Circulation	1,375	97,555

**Library Visitors, Fiscal Years 2019-20 through 2023-24**

Fiscal Years	FY 2019-20	FY 2020-21	FY 2021-22	FY 2022-23	FY 2023-24
Total Visits	72,026	22,753	42,903	53,254	59,585

Source: EGSC Library

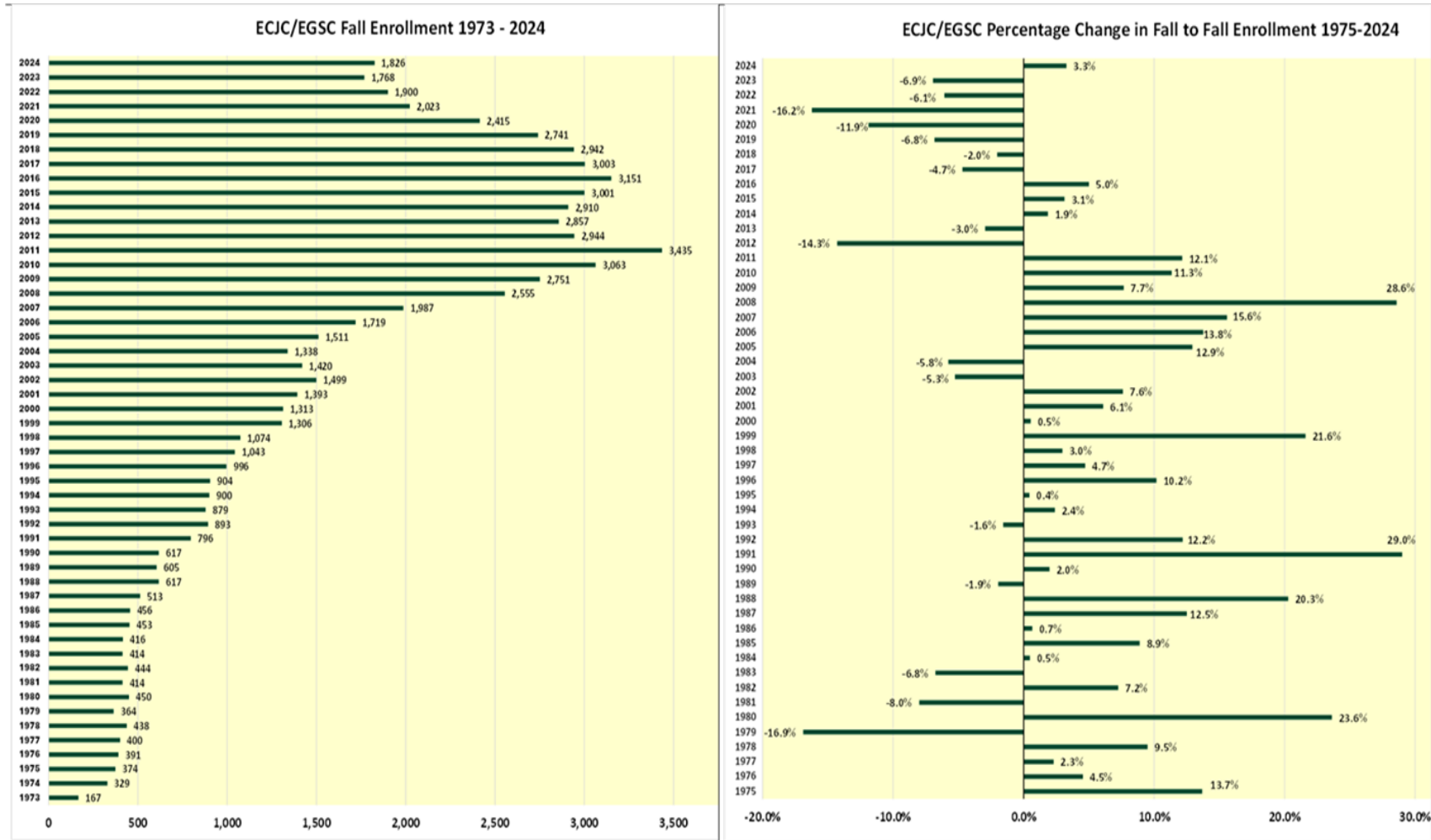
Credits Hours Earned to Attempted by Semester and Course Delivery Mode Summer 2014 – Spring 2024

Semester	Credits Earned	Credits Attempted	Percent Completion
Summer 2014	3,861	4,771	80.9%
Summer 2015	4,069	5,002	81.3%
Summer 2016	4,472	5,573	80.2%
Summer 2017	4,646	5,644	82.3%
Summer 2018	4,769	5,860	81.4%
Summer 2019	4,469	5,489	81.4%
Summer 2020	4,850	5,951	81.5%
Summer 2021	3,519	4,515	77.9%
Summer 2022	2,302	2,926	78.7%
Summer 2023	2,268	3,184	71.2%
Fall 2014	24,411	34,955	69.8%
Fall 2015	26,192	36,147	72.5%
Fall 2016	26,793	36,400	73.6%
Fall 2017	25,421	34,698	73.3%
Fall 2018	23,802	33,698	70.6%
Fall 2019	22,706	31,817	71.4%
Fall 2020	17,959	26,256	68.4%
Fall 2021	14,939	22,761	65.6%
Fall 2022	14,050	21,135	66.5%
Fall 2023	13,278	19,097	69.5%
Spring 2015	21,924	30,568	71.7%
Spring 2016	23,176	31,649	73.2%
Spring 2017	22,845	31,157	73.3%
Spring 2018	21,684	29,758	72.9%
Spring 2019	21,102	29,165	72.4%
Spring 2020	20,179	27,252	74.0%
Spring 2021	14,091	19,884	70.9%
Spring 2022	11,646	16,649	70.0%
Spring 2023	11,190	16,110	69.5%
Spring 2024	11,174	15,557	71.8%
<b>Total Credit Hours</b>	<b>427,787</b>	<b>593,628</b>	<b>72.1%</b>
Taking Face to Face Only Total	173,987	249,686	69.7%
Taking Online Only Total	74,301	104,719	71.0%
Taking Face to Face and Online Total	179,499	239,223	75.0%

Source: EGSC Office of Strategic Planning and Institutional Research

# ENROLLMENT

**EGSC Fall Enrollment 1973-2024**



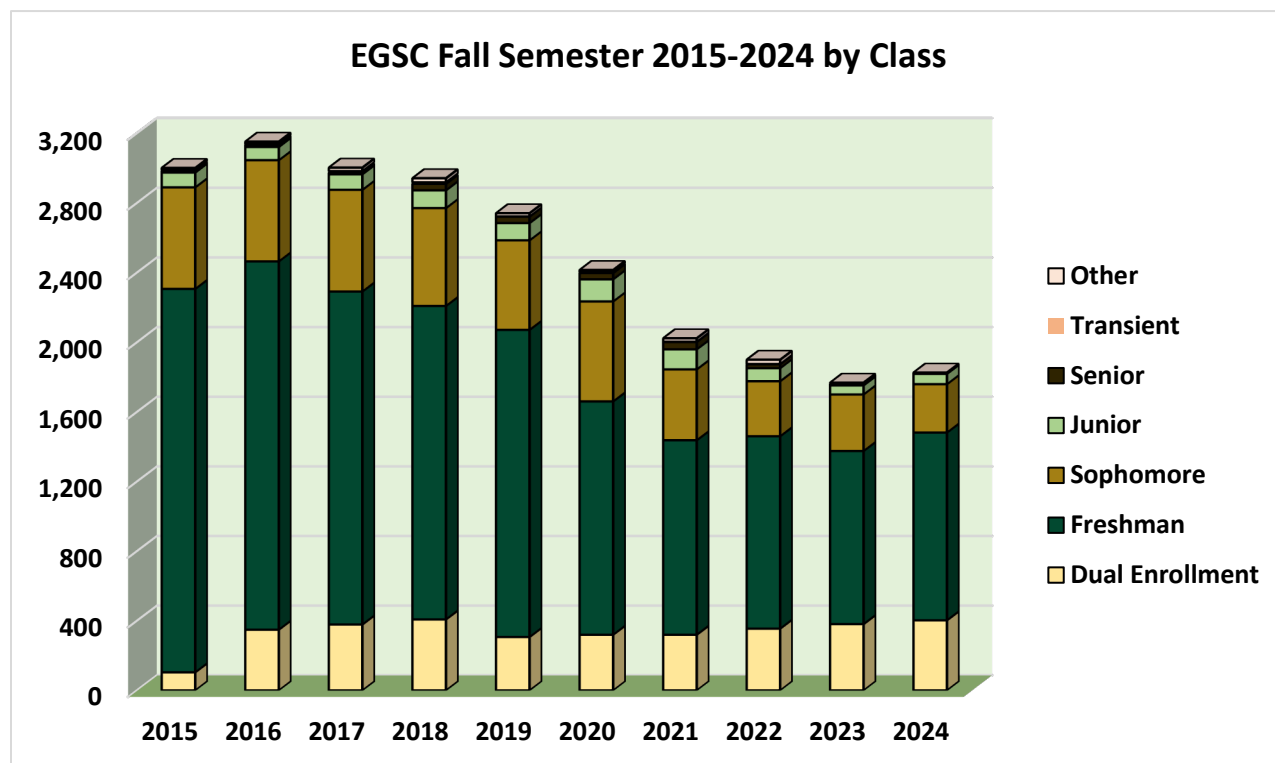
Source: EGSC Office of Strategic Planning and Institutional Research

**Enrollment Counts by Class Level: Fall Semesters 2015-2024**

Fall Semester	2015	2016	2017	2018	2019	2020	2021	2022	2023	2024
Dual Enrolled	104	349	379	408	307	320	320	355	381	403
Freshman	2,203	2,116	1,913	1,801	1,765	1,341	1,118	1,106	995	1,079
Sophomore	583	581	584	562	514	574	407	316	325	278
Junior	85	76	89	102	99	127	115	75	52	59
Senior	7	12	10	37	37	36	42	22	10	6
Transient	7	5	9	9	1	5	2	2	5	1
Other	12	13	19	23	18	12	19	24	-	-
<b>Fall Total Enrollment</b>	<b>3,001</b>	<b>3,152</b>	<b>3,003</b>	<b>2,942</b>	<b>2,741</b>	<b>2,415</b>	<b>2,023</b>	<b>1,900</b>	<b>1,768</b>	<b>1,826</b>

**Enrollment Percentages by Class Level: Fall Semesters 2015-2024**

Fall Semester	2015	2016	2017	2018	2019	2020	2021	2022	2023	2024
Dual Enrolled	3.5%	11.1%	12.6%	13.9%	11.2%	13.3%	15.8%	18.7%	21.5%	22.1%
Freshman	73.4%	67.1%	63.7%	61.2%	64.4%	55.5%	55.3%	58.2%	56.3%	59.1%
Sophomore	19.4%	18.4%	19.4%	19.1%	18.8%	23.8%	20.1%	16.6%	18.4%	15.2%
Junior	2.8%	2.4%	3.0%	3.5%	3.6%	5.3%	5.7%	3.9%	2.9%	3.2%
Senior	0.2%	0.4%	0.3%	1.3%	1.3%	1.5%	2.1%	1.2%	0.6%	0.3%
Transient	0.2%	0.2%	0.3%	0.3%	0.0%	0.2%	0.1%	0.1%	0.3%	0.1%
Other	0.4%	0.4%	0.6%	0.8%	0.7%	0.5%	0.9%	1.3%	-	-



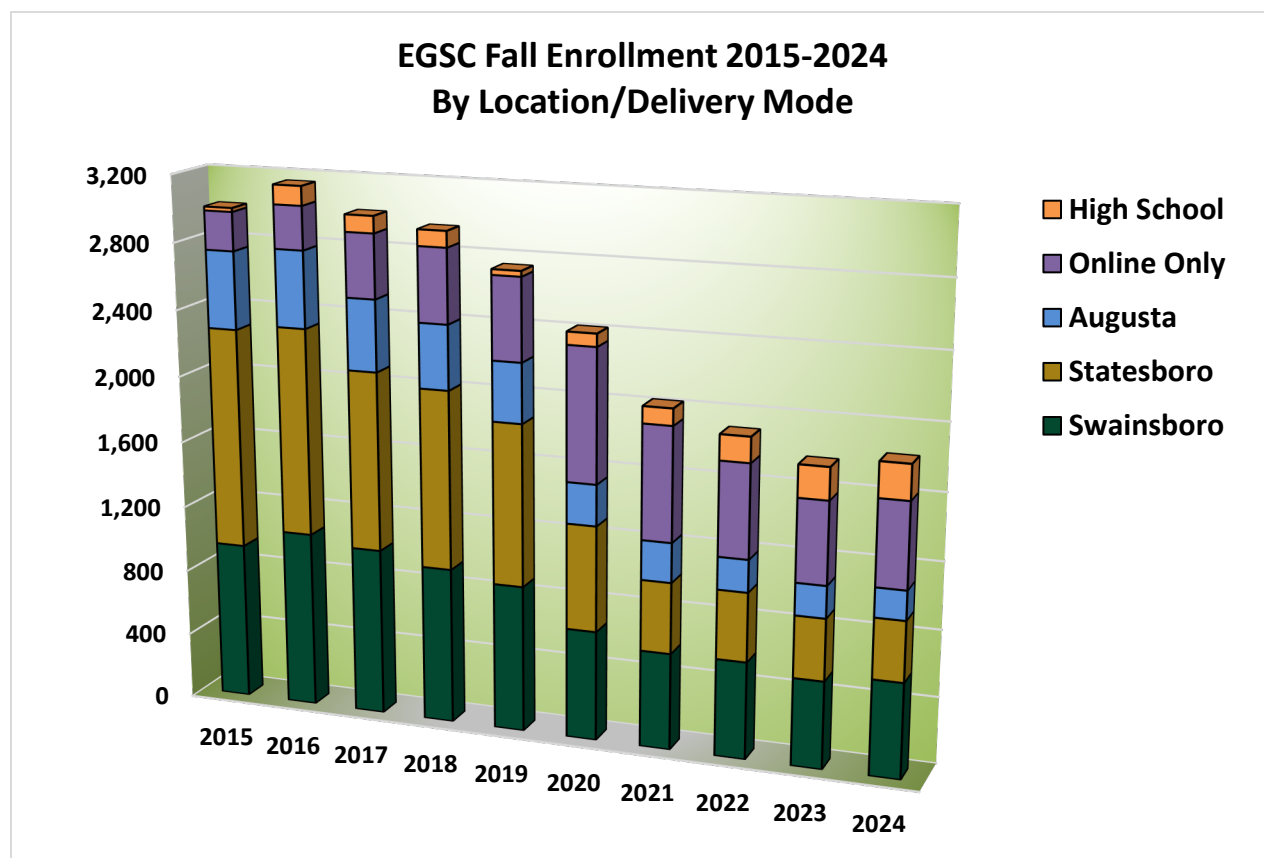
Source: EGSC Office of Strategic Planning and Institutional Research

**Enrollment Counts by Location/Delivery Mode: Fall Semester 2015-2024**

Fall Semester	2015	2016	2017	2018	2019	2020	2021	2022	2023	2024
High School	23	115	101	96	33	76	100	151	191	208
Online Only	232	260	383	443	493	797	680	558	490	509
Augusta	468	462	429	386	357	246	236	193	191	175
Statesboro	1,327	1,249	1,078	1,075	973	634	425	413	370	361
Swainsboro	951	1,066	1,012	942	885	662	582	585	526	573
<b>Total Enrollment</b>	<b>3,001</b>	<b>3,152</b>	<b>3,003</b>	<b>2,942</b>	<b>2,741</b>	<b>2,415</b>	<b>2,023</b>	<b>1,900</b>	<b>1,768</b>	<b>1,826</b>

**Enrollment Percentages by Location/Delivery Mode: Fall Semester 2015-2024**

Fall Semester	2015	2016	2017	2018	2019	2020	2021	2022	2023	2024
High School	0.8%	3.6%	3.4%	3.3%	1.2%	3.1%	4.9%	7.9%	10.8%	11.4%
Online Only	7.7%	8.2%	12.8%	15.1%	18.0%	33.0%	33.6%	29.4%	27.7%	27.9%
Augusta	15.6%	14.7%	14.3%	13.1%	13.0%	10.2%	11.7%	10.2%	10.8%	9.6%
Statesboro	44.2%	39.6%	35.9%	36.5%	35.5%	26.3%	21.0%	21.7%	20.9%	19.8%
Swainsboro	31.7%	33.8%	33.7%	32.0%	32.3%	27.4%	28.8%	30.8%	29.8%	31.4%



Source: EGSC Office of Strategic Planning and Institutional Research

**Fall Semester 2024 Counts of Gender and Ethnicity by Class Level**

Demographic Profile by Class	Freshman	Sophomore	Junior	Senior	Total
<b>Total Enrollment by Class</b>	<b>1,481</b>	<b>279</b>	<b>60</b>	<b>6</b>	<b>1,826</b>
<b>Female</b>	<b>880</b>	<b>151</b>	<b>41</b>	<b>5</b>	<b>1,077</b>
White (Non-Hispanic Origin)	323	66	16	1	406
Black or African American	400	67	21	3	491
Multiracial	85	9	2	1	97
Ethnicity Unknown	29	1	2		32
Hispanic	22	6			28
Asian	17	2			19
American Indian or Alaskan	3			0	3
Native Hawaiian/Pacific Island	1				1
<b>Male</b>	<b>601</b>	<b>128</b>	<b>19</b>	<b>1</b>	<b>749</b>
White (Non-Hispanic Origin)	234	60	7	0	301
Black or African American	274	53	9	0	336
Multiracial	52	12	3	1	68
Ethnicity Unknown	16				16
Hispanic	13	1			14
Asian	9	1		0	10
American Indian or Alaskan	1	1			2
Native Hawaiian/Pacific Island	2				2

**Fall Semester 2024 Percentages of Total Enrollment Gender and Ethnicity by Class Level**

Demographic Profile by Class	Freshman	Sophomore	Junior	Senior	Total
<b>Total Enrollment by Class</b>	<b>81.1%</b>	<b>15.3%</b>	<b>3.3%</b>	<b>0.3%</b>	<b>100.0%</b>
<b>Female</b>	<b>48.2%</b>	<b>8.3%</b>	<b>2.2%</b>	<b>0.3%</b>	<b>59.0%</b>
Black or African American	21.9%	3.7%	1.2%	0.2%	26.9%
White (Non-Hispanic Origin)	17.7%	3.6%	0.9%	0.1%	22.2%
Multiracial	4.7%	0.5%	0.1%	0.1%	5.3%
Ethnicity Unknown	1.6%	0.1%	0.1%		1.8%
Hispanic	1.2%	0.3%			1.5%
Asian	0.9%	0.1%		0.0%	1.0%
American Indian or Alaskan	0.2%				0.2%
Native Hawaiian/Pacific Island	0.1%				0.1%
<b>Male</b>	<b>32.9%</b>	<b>7.0%</b>	<b>1.0%</b>	<b>0.1%</b>	<b>41.0%</b>
Black or African American	15.0%	2.9%	0.5%	0.0%	18.4%
White (Non-Hispanic Origin)	12.8%	3.3%	0.4%	0.0%	16.5%
Multiracial	2.8%	0.7%	0.2%	0.1%	3.7%
Ethnicity Unknown	0.9%				0.9%
Hispanic	0.7%	0.1%			0.8%
Asian	0.5%	0.1%		0.0%	0.5%
American Indian or Alaskan	0.1%	0.1%			0.1%
Native Hawaiian/Pacific Island	0.1%				0.1%

Source: EGSC Office of Strategic Planning and Institutional Research

**Fall Semester 2024 Counts of Gender and Ethnicity by Location/Mode of Delivery**

Gender/Ethnicity	Augusta	Statesboro	Swainsboro	High School	Online Only	Total
<b>Total Enrollment by Location</b>	<b>175</b>	<b>361</b>	<b>573</b>	<b>208</b>	<b>509</b>	<b>1,826</b>
<b>Female</b>	<b>106</b>	<b>188</b>	<b>291</b>	<b>148</b>	<b>344</b>	<b>1,077</b>
Black or African American	48	67	162	56	158	491
White	26	83	99	74	124	406
Multiracial	15	23	19	11	29	97
Ethnicity Unknown	5	4	6	3	14	32
Hispanic	4	10	4	3	7	28
Asian	8	1	1	1	8	19
American Indian or Alaskan Native	0				3	3
Native Hawaiian/Pacific Island					1	1
<b>Male</b>	<b>69</b>	<b>173</b>	<b>282</b>	<b>60</b>	<b>165</b>	<b>749</b>
Black or African American	35	61	150	17	73	336
White	17	87	92	34	71	301
Multiracial	9	17	24	3	15	68
Ethnicity Unknown	1	2	7	3	3	16
Hispanic	3	3	6	1	1	14
Asian	3	1	3	2	1	10
American Indian or Alaskan Native	1	1	0		0	2
Native Hawaiian/Pacific Island	0	1			1	2

**Fall Semester 2024 Percentages of Total Enrollment by Gender and Ethnicity for Location/Mode of Delivery**

Gender/Ethnicity	Augusta	Statesboro	Swainsboro	High School	Online Only	Total
<b>Total Enrollment by Location</b>	<b>9.6%</b>	<b>19.8%</b>	<b>31.4%</b>	<b>11.4%</b>	<b>27.9%</b>	<b>100.0%</b>
<b>Female</b>	<b>5.8%</b>	<b>10.3%</b>	<b>15.9%</b>	<b>8.1%</b>	<b>18.8%</b>	<b>59.0%</b>
Black or African American	2.6%	3.7%	8.9%	3.1%	8.7%	26.9%
White	1.4%	4.5%	5.4%	4.1%	6.8%	22.2%
Multiracial	0.8%	1.3%	1.0%	0.6%	1.6%	5.3%
Ethnicity Unknown	0.3%	0.2%	0.3%	0.2%	0.8%	1.8%
Hispanic	0.2%	0.5%	0.2%	0.2%	0.4%	1.5%
Asian	0.4%	0.1%	0.1%	0.1%	0.4%	1.0%
American Indian or Alaskan Native	0.0%				0.2%	0.2%
Native Hawaiian/Pacific Island					0.1%	0.1%
<b>Male</b>	<b>3.8%</b>	<b>9.5%</b>	<b>15.4%</b>	<b>3.3%</b>	<b>9.0%</b>	<b>41.0%</b>
Black or African American	1.9%	3.3%	8.2%	0.9%	4.0%	18.4%
White	0.9%	4.8%	5.0%	1.9%	3.9%	16.5%
Multiracial	0.5%	0.9%	1.3%	0.2%	0.8%	3.7%
Ethnicity Unknown	0.1%	0.1%	0.4%	0.2%	0.2%	0.9%
Hispanic	0.2%	0.2%	0.3%	0.1%	0.1%	0.8%
Asian	0.2%	0.1%	0.2%	0.1%	0.1%	0.5%
American Indian or Alaskan Native	0.1%	0.1%	0.0%		0.0%	0.1%
Native Hawaiian/Pacific Island	0.0%	0.1%			0.1%	0.1%



**Enrolled Georgia Residents County by Total Enrollment and by Assigned Campus: Fall 2024**

Georgia County	Enrolled	% Total Enrollment	EGSC Augusta		
			Georgia County	Enrolled	% Enrollment
Richmond	251	13.7%	Richmond	172	45.1%
Columbia	193	10.6%	Columbia	149	39.1%
Emanuel	165	9.0%	12 Other GA Counties	48	12.6%
Bulloch	148	8.1%	<b>Total from Georgia</b>	<b>369</b>	<b>96.9%</b>
Chatham	57	3.1%	Total Out of State	12	3.1%
Screven	53	2.9%	<b>Total</b>	<b>381</b>	<b>100.0%</b>
Toombs	51	2.8%	EGSC Statesboro		
Burke	50	2.7%	Bulloch	100	23.8%
Effingham	50	2.7%	Chatham	30	7.1%
Candler	49	2.7%	Effingham	25	5.9%
Johnson	46	2.5%	Screven	16	3.8%
Bryan	33	1.8%	Tattnall	14	3.3%
Fulton	32	1.8%	Richmond	13	3.1%
Washington	32	1.8%	Columbia	13	3.1%
Jefferson	31	1.7%	Candler	13	3.1%
Tattnall	25	1.4%	Bryan	13	3.1%
Henry	22	1.2%	Evans	13	3.1%
Treutlen	22	1.2%	53 Other GA Counties	158	37.5%
Cobb	21	1.2%	<b>Total from Georgia</b>	<b>408</b>	<b>96.9%</b>
DeKalb	21	1.2%	Total Out of State	13	3.1%
Gwinnett	21	1.2%	<b>Total</b>	<b>421</b>	<b>100.0%</b>
McDuffie	21	1.2%	EGSC Swainsboro		
Liberty	19	1.0%	Emanuel	159	15.5%
Evans	18	1.0%	Richmond	66	6.4%
Fayette	18	1.0%	Bulloch	48	4.7%
Houston	17	0.9%	Johnson	46	4.5%
Bibb	15	0.8%	Toombs	39	3.8%
Jenkins	15	0.8%	Screven	37	3.6%
Laurens	12	0.7%	Candler	36	3.5%
Wilkes	11	0.6%	Columbia	31	3.0%
Douglas	10	0.5%	Washington	31	3.0%
Clayton	9	0.5%	Chatham	27	2.6%
Warren	9	0.5%	Jefferson	26	2.5%
Glynn	8	0.4%	Effingham	25	2.4%
Long	8	0.4%	Fulton	25	2.4%
Montgomery	8	0.4%	Treutlen	22	2.1%
64 Other GA Counties	162	8.9%	74 Other GA Counties	338	33.0%
<b>Total from Georgia</b>	<b>1,733</b>	<b>94.9%</b>	<b>Total from Georgia</b>	<b>956</b>	<b>93.4%</b>
Total Out of State	93	5.1%	Total Out of State	68	6.6%
<b>Total</b>	<b>1,826</b>	<b>100.0%</b>	<b>Total</b>	<b>1,024</b>	<b>100.0%</b>

Source: EGSC Office of Strategic Planning and Institutional Research

**Fall Semester 2024 Percentages of Student Load by Class Level**

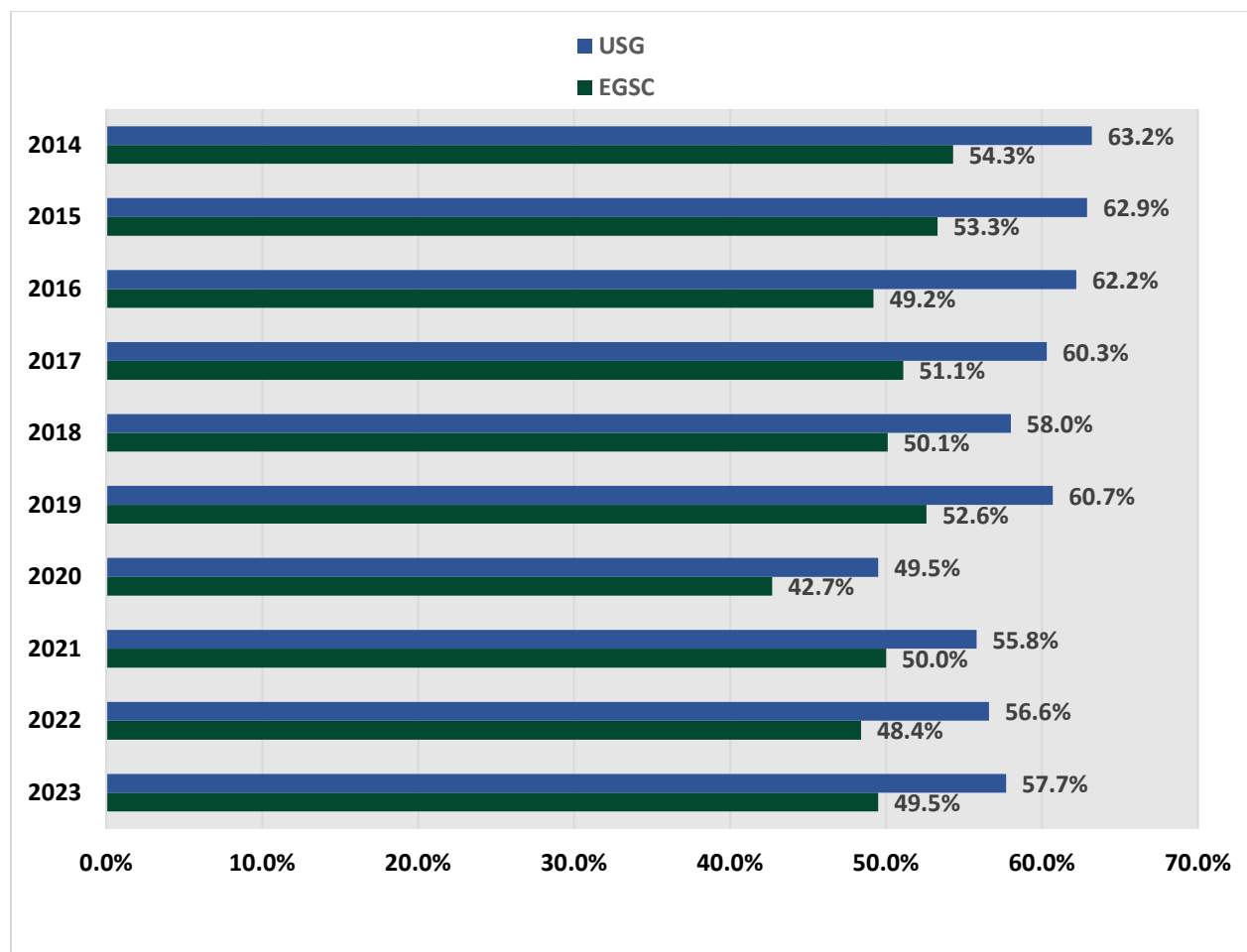
Student Load	Freshman	Sophomore	Junior	Senior	Overall
Full-time	58.8%	66.5%	35.6%	66.7%	59.3%
Part-time	41.2%	33.5%	64.4%	33.3%	40.7%

**Fall Semester 2024 Number of Veteran/Military Students**

Military Students	No.
MAA – Army	2
MAN – Military Active Navy	2
MG – Military National Guard	7
MIL – Veterans Active Duty	1
MR – Military Reservist	3
<b>Total</b>	<b>15</b>

Source: EGSC Office of Strategic Planning and Institutional Research

**Retention Rates for First-Time Full-Time Undergraduates: Entering Fall 2014 – 2023 Cohorts**



Source: University System of Georgia Office of Research and Policy Analysis

# STUDENT RELATED INFORMATOIN

Crime Statistics

EGSC Swainsboro for the 2021, 2022 and 2023 Calendar Years

Swainsboro Campus						
Criminal Offenses	Year	On Campus			Non-campus Building or Property	Public Property
		Student Housing Facilities	Other	On Campus Total		
Rape	2021	1	1	2	0	0
	2022	0	0	0	0	0
	2023	0	0	0	0	0
Fondling	2021	2	0	2	0	0
	2022	0	0	0	0	0
	2023	1	1	2	0	0
Aggravated Assault	2021	0	0	0	0	0
	2022	2	0	2	0	0
	2023	0	0	0	0	0
<b>Violence Against Women Act Offenses</b>						
Dating Violence	2021	0	0	0	0	0
	2022	6	0	6	0	0
	2023	1	1	2	0	0
Domestic Violence	2021	0	0	0	0	0
	2022	0	0	0	0	0
	2023	3	0	3	0	0
Stalking	2021	0	0	0	0	0
	2022	1	0	1	0	0
	2023	1	0	1	0	0
<b>Arrests</b>						
Liquor Law Violations	2021	0	0	0	0	0
	2022	3	0	3	0	0
	2023	1	0	1	0	0
Drug Law Violations	2021	0	0	0	0	3
	2022	0	0	0	0	0
	2023	9	5	14	0	3
Illegal Weapons Possession	2021	0	0	0	0	2
	2022	2	0	2	0	0
	2023	1	0	1	0	0
<b>Disciplinary Referrals</b>						
Liquor Law Violations	2021	11	0	11	0	0
	2022	0	0	0	0	0
	2023	4	0	4	0	0
Drug Law Violations	2021	9	1	10	0	2
	2022	15	1	16	0	0
	2023	12	2	14	0	0
Illegal Weapons Possession	2021	1	0	1	0	1
	2022	2	0	2	0	0
	2023	3	0	3	0	0

Source: EGSC Office of Public Safety Clery Swainsboro Report

**EGSC Graduate Alumni by State and Georgia County of Residence through Fall 2024**

State	Alumni	State	Alumni	State	Alumni
Alabama	1	Louisiana	2	Pennsylvania	4
Alaska	2	Maryland	3	Rhode Island	1
Arkansas	1	Massachusetts	1	South Carolina	24
California	6	Michigan	4	Tennessee	3
Colorado	2	Minnesota	1	Texas	2
Connecticut	1	Mississippi	1	Virginia	5
Florida	36	Missouri	3	West Virginia	1
Georgia	6,323	Nevada	1	Wisconsin	1
Illinois	3	New Jersey	1	Army Post Office	3
Kansas	1	New York	4	International	2
Kentucky	1	North Carolina	5	<b>TOTAL</b>	<b>6,449</b>

County	Alumni	County	Alumni	County	Alumni	County	Alumni
Appling	36	DeKalb	51	Jenkins	236	Putnam	2
Bacon	3	Dodge	7	Johnson	242	Rabun	1
Baldwin	12	Dougherty	8	Lanier	1	Richmond	206
Barrow	5	Douglas	8	Laurens	44	Rockdale	12
Bartow	1	Early	2	Lee	3	Screven	117
Ben Hill	4	Effingham	108	Liberty	55	Spalding	2
Bibb	22	Elbert	4	Lincoln	6	Stephens	4
Bleckley	3	Emanuel	1,767	Long	6	Sumter	2
Bryan	69	Evans	96	Lowndes	3	Talbot	1
Bulloch	598	Fayette	10	Macon	1	Tattnell	208
Burke	123	Forsyth	6	Madison	2	Telfair	12
Butts	3	Franklin	1	Marion	1	Thomas	5
Camden	18	Fulton	57	McDuffie	25	Tift	3
Candler	301	Glascok	5	McIntosh	4	Toombs	552
Carroll	5	Glynn	12	Meriwether	1	Treutlen	129
Chatham	114	Grady	2	Mitchell	1	Troup	2
Cherokee	9	Greene	1	Monroe	1	Upson	3
Clarke	13	Gwinnett	38	Montgomery	95	Walton	13
Clayton	21	Habersham	2	Morgan	3	Ware	6
Cobb	28	Hall	6	Muscogee	4	Warren	4
Coffee	8	Hancock	1	Newton	10	Washington	47
Colquitt	11	Haralson	1	Oconee	7	Wayne	20
Columbia	116	Hart	2	Oglethorpe	2	Webster	1
Cook	1	Henry	39	Paulding	5	Wheeler	9
Coweta	7	Houston	29	Peach	3	Whitfield	1
Crawford	1	Jackson	4	Pierce	4	Wilcox	1
Crisp	2	Jasper	3	Pike	1	Wilkes	12
Dawson	1	Jeff Davis	10	Polk	2	Wilkinson	3
Decatur	4	Jefferson	280	Pulaski	2	<b>Georgia</b>	<b>6,323</b>

Source: EGSC Office of Institutional Advancement

# FACULTY AND STAFF

**Full-Time Faculty Spring Semester 2025**

<b>Augusta Faculty</b>	<b>Discipline</b>	<b>Swainsboro Faculty</b>	<b>Discipline</b>
Sega, Martiana F.	Biology	Simmons, Breana	Biology
Boyd, Morghan A. †	English	Wedincamp, Jimmy	Biology
Walter, Jason A. †	English	Williams, Parker	Chemistry
Taylor, Aaron L. †	Mathematics	Davis, Theresa R.	CHOICE
<b>Statesboro Faculty</b>	<b>Discipline</b>	Jones, LaVonda F.*	Communications
Smoyer, John H.	Biology	Watkins, Kristin M.	Criminal Justice
Jones, LaVonda F.*	Communications	Lee, Jaehyuk*	Economics
Lee, Jaehyuk*	Economics	Sharman, Sandra	Education
Czerny, Valerie	English	Boudreaux, Armond	English
Denton, Gina R.	English	Brasher, Alan	English
Simmons, Amelia J.* †	English/Education	Kraus, Christian N. †	English/Film/Theater
Howell, Jeffery B.	History	Palumbo, Carmine D.	English
Vess, Deborah L.	History/Art/Music	Simmons, Amelia J.* †	English/Education
Barrs, Keith	Mathematics	Strickland, Julie M. †	English
Ward, Larie	Mathematics	Todd, Jessica A.	English/Spanish
Xie, Fang	Mathematics	Joiner, Courtney L.	History
Mancill, Daniel K.	Political Science	Aweda, Oluwakayode	Mathematics
Lee, Deborah †	Psychology	Kelly, Heather	Mathematics
Dart, Jeniba	Spanish	Lynn, Candace M.	Mathematics
Altamirano, David	Sociology	White, Yelena V.	Physics/Integrated Science
<b>Swainsboro Faculty</b>	<b>Discipline</b>	Beall, James	Psychology
Goss, Natasha W.	Accounting/Business	Braddy, Larry	Psychology
Purcell, Desmal	Art	Vogel, Harry L.	Sociology

\*Faculty teaching at more than one EGSC location

†Faculty teaching dual enrollment courses at a high school

**David Chevalier, Associate Vice President for Academic Affairs**

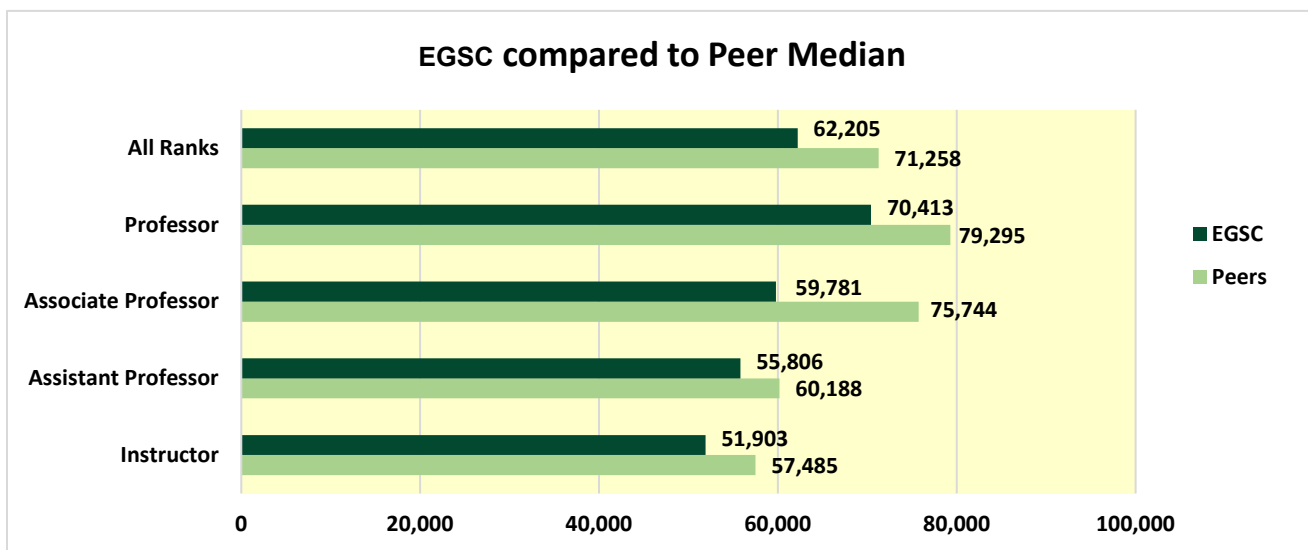
Source: EGSC Office of Strategic Planning and Institutional Research

**Faculty Rank by Ethnicity and Gender Fall 2024**

Tenured Full-Time Faculty Fall Semester 2024		Professor		Associate Professor		Assistant Professor		Instructors		Total					
		No.	%	No.	%	No.	%	No.	%	No.	%				
Nonresident Alien	Men	0	0.0%	1	2.9%	0	0.0%	0	0.0%	1	2.9%				
	Women	0	0.0%	0	0.0%	0	0.0%	0	0.0%	0	0.0%				
Asian	Men													0	0.0%
	Women	1	2.9%	0	0.0%									1	2.9%
Black	Men	0	0.0%	1	2.9%									0	0.0%
	Women	0	0.0%	0	0.0%									0	0.0%
Hispanic	Men	0	0.0%	1	2.9%									1	2.9%
	Women	1	2.9%	0	0.0%									0	0.0%
White	Men	8	22.9%	6	17.1%					1	2.9%	0	0.0%	15	42.9%
	Women	11	31.4%	3	8.6%					1	2.9%	0	0.0%	15	42.9%
Multiracial	Men	0	0.0%	0	0.0%					0	0.0%	0	0.0%	0	0.0%
	Women									0	0.0%				
Total	Men	8	22.9%	9	25.7%	1	2.9%	0	0.0%	18	51.4%				
	Women	13	37.1%	3	8.6%	1	2.9%	0	0.0%	17	48.6%				
	Total	21	60.0%	12	34.3%	2	5.7%	0	0.0%	35	100.0%				

**EGSC Full-Time Faculty Salaries Compared to IPEDS Peers AY 2024**

Faculty Salaries	EGSC	Peers	% of Peers
All Ranks	57,485	51,903	90.3%
Professor	60,188	55,806	92.7%
Associate Professor	75,744	59,781	78.9%
Assistant Professor	79,295	70,413	88.8%
Instructor	71,258	62,205	87.3%



Source: IPEDS (Integrated Postsecondary Education Data System)



**College Full-Time Employees by Occupational Classification, Gender and Ethnicity: Fall Semester 2024**

Employees by Occupational Category	White	Black	Hispanic	Asian	American Indian or Alaska Native	Multi-racial	Unknown Ethnicity	Non-resident Alien	Total
<b>Men</b>	<b>44</b>	<b>11</b>	<b>3</b>	<b>0</b>	<b>0</b>	<b>1</b>	<b>1</b>	<b>1</b>	<b>61</b>
Instructional Staff	16	3	1					1	21
Student and Academic Affairs and Other Education Services Occupations	1	1	1						3
Management	10	4							14
Computer, Engineering, and Science	2								2
Community, Social Service, Legal, Arts, Design, Entertainment, Sports and Media	2	1							3
Service Occupations	7						1		8
Office and Administrative Support	3	2							5
Natural Resources, Construction, and Maintenance	3		1			1			5
<b>Women</b>	<b>71</b>	<b>18</b>	<b>3</b>	<b>2</b>	<b>1</b>	<b>0</b>	<b>0</b>	<b>0</b>	<b>95</b>
Instructional Staff	21	3	1	1					23
Librarians and Media Collection Specialists	2		1						3
Student and Academic Affairs and Other Education Services Occupations	9	3							7
Management	17	3							22
Business and Financial Operations	2	1							3
Computer, Engineering, and Science									0
Community, Social Service, Legal, Arts, Design, Entertainment, Sports and Media		1							2
Service Occupations	6	5	1		1				13
Office and Administrative Support	14	2		1					14
<b>Total</b>	<b>115</b>	<b>29</b>	<b>6</b>	<b>2</b>	<b>1</b>	<b>1</b>	<b>1</b>	<b>1</b>	<b>156</b>

Source: IPEDS (Integrated Postsecondary Education Data System)

# FINANCIAL INFORMATION

**Revenue by Source: Fiscal Years 2019 through 2023**

<b>EGSC Revenue Category</b>	<b>FY 2018-19</b>	<b>FY 2019-20</b>	<b>FY 2020-21</b>	<b>FY 2021-22</b>	<b>FY 2022-23</b>
Tuition and fees after deducting discounts and allowances	3,981,928	3,325,502	3,087,228	3,236,408	2,209,543
Federal operating grants and contracts	56,238	72,374	6,679	0	0
State operating grants and contracts	199,676	119,206	159,779	90,086	105,265
Local/private operating grants and contracts	19,337	3,000	2,350	848	22
Sales and services of auxiliary enterprises	2,807,410	2,411,730	1,999,320	1,727,948	1,846,393
Sales and services of educational activities					67,732
Other sources - operating	203,118	333,762	392,894	490,636	398,836
<b>Total operating revenues</b>	<b>7,267,707</b>	<b>6,265,574</b>	<b>5,648,250</b>	<b>5,545,926</b>	<b>4,627,791</b>
State appropriations	9,984,666	10,123,680	9,827,576	9,910,490	9,110,248
Federal nonoperating grants	8,515,520	10,295,620	9,567,889	14,489,659	9,947,898
State nonoperating grants	76,518	95,651	67,968	64,091	73,269
Gifts including contributions from affiliated organizations	741,321	945,909	320,024	617,702	4,822,481
Investment income	31,014	26,502	24,014	-38,828	50,752
Other nonoperating revenues			539	0	0
<b>Total nonoperating revenues</b>	<b>19,349,039</b>	<b>21,487,362</b>	<b>19,808,010</b>	<b>25,043,114</b>	<b>24,004,648</b>
<b>Total operating and nonoperating revenues</b>	<b>26,616,746</b>	<b>27,752,936</b>	<b>25,456,260</b>	<b>30,589,040</b>	<b>28,632,439</b>
Capital grants and gifts	1,115,265	3,352,982	1,108,829	3,084,484	125,490
<b>Total revenues and other additions</b>	<b>27,732,011</b>	<b>31,105,918</b>	<b>26,565,089</b>	<b>33,673,524</b>	<b>28,757,929</b>
<b>Percent by Line Item of Total Revenues and Other Additions</b>	<b>FY 2018-19</b>	<b>FY 2019-20</b>	<b>FY 2020-21</b>	<b>FY 2021-22</b>	<b>FY 2022-23</b>
Tuition and fees after deducting discounts and allowances	14.4%	10.7%	11.6%	9.6%	7.7%
Federal operating grants and contracts	0.2%	0.2%	0.0%	0.0%	0.0%
State operating grants and contracts	0.7%	0.4%	0.6%	0.3%	0.4%
Local/private operating grants and contracts	0.1%	0.0%	0.0%	0.0%	0.0%
Sales and services of auxiliary enterprises	10.1%	7.8%	7.5%	5.1%	6.4%
Other sources - operating	0.7%	1.1%	1.5%	1.5%	1.4%
<b>Total operating revenues</b>	<b>26.2%</b>	<b>20.1%</b>	<b>21.3%</b>	<b>16.5%</b>	<b>16.1%</b>
State appropriations	36.0%	32.5%	37.0%	29.4%	31.7%
Federal nonoperating grants	30.7%	33.1%	36.0%	43.0%	34.6%
State nonoperating grants	0.3%	0.3%	0.3%	0.2%	0.3%
Gifts including contributions from affiliated organizations	2.7%	3.0%	1.2%	1.8%	16.8%
Investment income	0.1%	0.1%	0.1%	-0.1%	0.2%
Other nonoperating revenues			0.0%	0.0%	0.0%
<b>Total nonoperating revenues</b>	<b>69.8%</b>	<b>69.1%</b>	<b>74.6%</b>	<b>74.4%</b>	<b>83.5%</b>
<b>Total operating and nonoperating revenues</b>	<b>96.0%</b>	<b>89.2%</b>	<b>95.8%</b>	<b>90.8%</b>	<b>99.6%</b>
Capital grants and gifts	4.0%	10.8%	4.2%	9.2%	0.4%
<b>Total revenues and other additions</b>	<b>100.0%</b>	<b>100.0%</b>	<b>100.0%</b>	<b>100.0%</b>	<b>100.0%</b>

Source: IPEDS (Integrated Postsecondary Education Data System)

**Expenditures by Function: Fiscal Years 2019 through 2023**

<b>EGSC Expense Category</b>	<b>FY 2018-19</b>	<b>FY 2019-20</b>	<b>FY 2020-21</b>	<b>FY 2021-22</b>	<b>FY 2022-23</b>
Instruction	10,033,552	10,333,306	9,299,589	8,606,289	6,754,236
Public Service	-	9,959	9,400	6,716	15,025
Academic support	2,674,731	3,233,104	3,188,937	4,834,622	3,353,185
Student services	2,200,818	2,200,481	2,102,653	2,265,823	2,069,935
Institutional support	3,835,436	5,012,482	3,953,910	3,764,096	3,505,728
Scholarships and fellowships expenses	4,516,609	5,346,384	5,271,597	9,183,525	3,882,557
Auxiliary enterprises	2,413,267	2,068,558	2,084,393	1,819,958	2,397,388
Other Functional Expenses and deductions	1,012,077	1,489,057	1,504,912	3,844,222	4,397,241
<b>Total expenses and deductions</b>	<b>26,686,490</b>	<b>29,693,331</b>	<b>27,415,391</b>	<b>34,325,251</b>	<b>26,375,295</b>
<b>Percent by Line Item of Total Expenses and Deductions</b>	<b>FY 2018-19</b>	<b>FY 2019-20</b>	<b>FY 2020-21</b>	<b>FY 2021-22</b>	<b>FY 2022-23</b>
Instruction	37.6%	34.8%	33.9%	25.1%	25.6%
Academic support	10.0%	10.9%	11.6%	14.1%	12.7%
Student services	8.2%	7.4%	7.7%	6.6%	7.8%
Institutional support	14.4%	16.9%	14.4%	11.0%	13.3%
Scholarships and fellowships expenses	16.9%	18.0%	19.2%	26.8%	14.7%
Auxiliary enterprises	9.0%	7.0%	7.6%	5.3%	9.1%
Other Functional Expenses and deductions	3.8%	5.0%	5.5%	11.2%	16.7%
<b>Total expenses and deductions</b>	<b>100.0%</b>	<b>100.0%</b>	<b>100.0%</b>	<b>100.0%</b>	<b>100.0%</b>

Source: IPEDS (Integrated Postsecondary Education Data System)

**East Georgia State College Foundation Fundraising Fiscal Years 1999 through 2024**

<b>FY YEAR</b>	<b>TOTAL CONTRIBUTIONS</b>	<b>TOTAL SUPPORT AND REVENUE</b>
1999	54,996	55,996
2000	78,784	83,109
2001	95,270	128,007
2002	93,775	81,647
2003	186,057	211,939
2004	216,682	248,861
2005	300,648	268,550
2006	178,285	221,509
2007	240,945	361,744
2008	252,896	192,454
2009	127,077	178,484
2010	234,782	270,205
2011	152,147	174,646
2012	233,908	272,130
2013	245,723	317,148
2014	247,087	363,075
2015	1,255,543	1,292,216
2016	210,392	234,614
2017	766,721	879,720
2018	789,116	880,994
2019	32,173	356,297
2020	116,933	319,316
2021	21,865	627,366
2022	45,867	6,309
2023	12,745	277,771
2024	392,010	609,038

Source: Annual audited financial statements, East Georgia State College Foundation

# PHYSICAL FACILITIES

**College Buildings by Major Use, Swainsboro Campus: Spring 2025**

Major Use	No.	Description
Administration	5	GL Smith, LFG, Student Services, Police Department, Plant Operations
Academic	1	Academic Building
Physical Education/Athletics	1	GYM/PE Building
Public Service	1	Fulford Center
Residential	3	Bobcat Villas South, West; Strange Clubhouse

**Number of Rooms by Basic Room Type, Swainsboro Campus:**

Basic Room Type	Spring 2025
Classrooms	19
Discipline Teaching Laboratories	9
Computer Classroom	4
Offices	158

**Square Feet Space Assignment by Room Use and Building Location:**

Space Assignment by Room Use	Spring 2025
Classroom	15,177
Discipline Teaching Laboratories	9,865
Computer Classrooms	3,421
Offices	27,292
Library	10,615
Study	8,279
General Use	29,634
Support Services	10,326
Support Facilities	7,318
Residential	90,557
Non-assignable	118,516
Healthcare	698
Special Use Facilities	21,444
<b>Total Square Feet</b>	<b>353,142</b>

**East Georgia State College Land Holdings\*: As of December 2024**

Swainsboro - 249.62 Acres

\*Does not include EGSC Foundation Property

Source: EGSC Office of the Director of Operations