



2021 Fact Book

East Georgia State College



Office of Strategic Planning
and Institutional Research

1/22/2021

East Georgia State College Fact Book 2021

Table of Contents

1 **About the College**

- 2 History of East Georgia State College
- 3 Vision and Mission of East Georgia State College
- 4 Carnegie Classification of East Georgia State College
- 5 East Georgia State College Swainsboro Campus Map and Legend
- 6 East Georgia State College Service Area Map
- 7 East Georgia State College Economic Impact: Fiscal Years 2009-2018
- 8 East Georgia State College FY 2021 – FY 2023 Strategic Plan Goals and Strategies

9 **ADMINISTRATION**

- 10 University System of Georgia Board of Regents 2019
- 11 University System of Georgia Administrative Staff 2020
- 12 East Georgia State College Organization Chart 2021
- 13 East Georgia State College Organization Chart 2021: Academic Affairs
- 14 East Georgia State College Organization Chart 2021: Student Affairs
- 15 East Georgia State College Organization Chart 2021: Augusta
- 16 East Georgia State College Organization Chart 2021: Statesboro
- 17 East Georgia State College Organization Chart 2021: Business Affairs
- 18 East Georgia State College Organization Chart 2021: Information Technology
- 19 East Georgia State College Organization Chart 2021: Institutional Advancement
- 20 East Georgia State College Organization Chart 2021: Athletic Department
- 21 East Georgia State College Organization Chart 2021: Police Department
- 22 East Georgia State College Cabinet: Spring 2021
- 23 The East Georgia State College Foundation: 2020-21 Trustees

24 **ADMISSIONS**

- 25 Applied, Accepted and Registered Fall Semester 2011-2020
- 25 Beginning Freshmen: Fall Semester 2011-2020
- 25 Mean Scholastic Aptitude Test (Old SAT) Scores for Beginning Freshmen: Fall Terms 2011-2020
- 25 Mean Scholastic Aptitude Test (New SAT) Scores for Beginning Freshmen: Fall Terms 2016-2020
- 26 Georgia High Schools of Beginning Freshmen: Fall 2020

27 **STUDENT FINANCIAL INFORMATION**

- 28 Semester Tuition and Fees 2020 – Spring 2021
- 29 EGSC SACSCOC and IPEDS Peer Colleges
- 30 EGSC and IPEDS Peer College Comparisons:
 - 30 • Academic Year Tuition and Fees for Full-Time, First Time Undergraduates
 - 30 • Academic Year Average Net Price of Attendance for Full-Time, First Time Undergraduates
 - 31 • Percent of Full-Time, First-Time Students Awarded Aid FY 2017-18
 - 31 • Average Amount Awarded of Full-Time, First-Time Students Awarded Aid FY 2017-18



East Georgia State College Fact Book 2021

Table of Contents

32	ACADEMIC INFORMATION
33	Associate and Baccalaureate Programs of Study Fall 2020
34	Degrees Conferred Academic Years 2010-11 through 2019-20
35	Degrees Conferred by Academic Program FY 2017-18 through FY 2019-20
36	Three-Year Completion Rates for Fall Semester First-Time Full-Time Associate Degrees: Entering Cohorts 2008-2017
37	Distribution of Grades by Class: Academic Year 2019-20
37	Participation in Education Abroad at the East Georgia State College: Academic Years 2009-10 through 2018-19
37	Library Resources FY 2017-18
38	Credits Hours Earned to Attempted by Semester and Course Delivery Summer 2011 – Spring 2019
39	ENROLLMENT
40	Enrollment Counts by Class Level: Fall Semester 2011-2020
40	Enrollment Percentages by Class Level: Fall Semester 2011-2020
40	Enrollment Chart by Class Level: Fall Semester 2011-2020
41	Enrollment Counts by Location and Mode of Delivery: Fall Semester 2011-2020
41	Enrollment Percentages by Location/Delivery Mode: Fall Semester 2011-2020
41	Enrollment Chart by Location and Mode of Delivery: Fall Semester 2011-2020
42	Enrollment Counts by Programs of Study: Fall 2020
43	Fall Semester 2020 Percentages of Student Load by Class Level
43	Fall Semester 2020 Percentages of Gender and Ethnicity by Class Level
43	Fall Semester 2020 Number of Veteran/Military Students
44	Fall Semester 2020 Counts of Gender and Ethnicity by Location/Mode of Delivery
44	Fall Semester 2020 Percentage of Gender and Ethnicity by Location/Mode of Delivery
45	Enrolled Georgia Residents by County of Residence: Fall 2020
46	Retention Rates for Fall Semester First-Time Full-Time Undergraduates: Entering Cohorts 2010-2019
47	STUDENT RELATED INFORMATION
48	Correll Scholars Program
49	Swainsboro Campus Student Housing Summary: Fall 2019 and Spring 2020
50	East Georgia State College Crime Statistics by Location
53	East Georgia State College Graduate Alumni by State of Residence through Spring 2020
53	East Georgia State College Graduate Alumni by Georgia County of Residence through Spring 2020
54	FACULTY AND STAFF
55	School of Humanities and Social Sciences Full-Time Faculty Spring Semester 2021
56	School of Mathematics and Natural Sciences Full-Time Faculty Spring Semester 2021
57	Full-Time Professorial Faculty by Rank and Ethnicity: Fall 2020
57	Average Academic Year Salaries of Instructional Faculty, EGSC and Selected Peers: Academic Year 2018-19
57	Average Academic Year Salaries Chart of Instructional Faculty, EGSC & Selected Peers: Academic Year 2018-19
58	College Employees by Occupational Classification, Gender and Ethnicity: November 1, 2020
59	FINANCIAL INFORMATION
60	Revenue by Source: Fiscal Years 2014-15 through 2018-19
61	Expenditures by Function: Fiscal Years 2014-15 through 2018-19
62	History of Fundraising: 1999-2020
63	PHYSICAL FACILITIES
64	College Buildings by Major Use, Swainsboro Campus: Spring 2021
64	Number of Rooms by Basic Room Type, Swainsboro Campus: Fall 2020
64	Space Assignment by Room Use and Building Location: Fall 2020
64	East Georgia State College Land Holdings: As of June 30, 2019





ABOUT THE COLLEGE

History of East Georgia State College

As early as 1956, community leaders in Emanuel county and Swainsboro urged the state to establish a two-year college in the area. Committees were formed in 1956 and in 1965, and lobbying efforts at the state level were undertaken, but without immediate results. In December 1969, the Board of Regents of the University System of Georgia authorized a study to determine the need for additional two-year colleges in the state. A year later, six possible sites, including the Swainsboro–Emanuel County area, were approved with the stipulation that the county of each prospective site provide the land or property for a campus site, as well as the funds for constructing and furnishing the initial physical plant.

In September 1971, the citizens of Emanuel County voted for a bond issue of \$2.1 million to underwrite the cost of a new college. The Emanuel County Board of Education, representing the citizens of the county and working with the local college committee, also provided a wooded site of 207 acres (190 acres of which were donated by Luck Flanders Gambrell) within the city limits of Swainsboro. In December 1971, the Board of Regents gave final approval for the campus site and named the new college Emanuel County Junior College. In 1987 the University System of Georgia mandated that the term "junior" be deleted from the names of its two-year institutions, and in 1988 Emanuel County Junior College became East Georgia College. The \$2.1 million bond issue also was paid off in 1988.

In 2012, after being granted state college status, the College's name was again changed to East Georgia State College (EGSC) to reflect a new mission of providing a limited number of baccalaureate degrees targeted to meet the needs of the College's service area. In addition to a Bachelor of Science in Biology, beginning in Fall Semester 2012, the ECSC launched an online Bachelor of Art in Fire and Emergency Services Administration in Spring Semester 2016 and an online Bachelor of Science RN to BSN Bridge Nursing Completion Program. Both of these online degree programs are designed to meet the needs of working professionals who seek to advance their careers.

Through the years, East Georgia State College has proudly maintained its original strategic purpose as an access institution with strong community ties and continues, today, to adhere to its original mission by providing accessibility to a wide range of credit and non-credit academic programs in an atmosphere contributing to the intellectual and cultural growth of our students.

Many in East Georgia State College's diverse student population are first generation and non-traditional college students who have been raised in economically depressed conditions within rural east-central Georgia. By tailoring our academic programs to meet the challenging developmental needs through learning support while also maintaining affordable tuition, East Georgia State College has been successful in increasing the educational levels of the communities it serves.

Vision and Mission of East Georgia State College

Presented below are East Georgia State College's (EGSC's) vision and mission statements. EGSC's vision statement provides the long-term context for pursuing a mission that focuses on extending the College's associate of arts degree options to multiple student populations and developing baccalaureate degrees targeted to the needs of its service area.

Vision Statement

Through bold and transformative action, East Georgia State College aspires to significantly increase the educational achievement of its students and to be an indispensable pathway to a more fulfilling and prosperous future.

Mission Statement

East Georgia State College is an associate degree granting, liberal arts institution of the University System of Georgia providing its students access to both academically transferable programs of study and collaborative programs in occupation related fields. The College also offers targeted baccalaureate level degrees that support the University System's initiative to expand educational opportunities. The College prepares traditional and nontraditional students for success in the global 21st century through a technologically advanced teaching and learning environment that fosters personal growth by utilizing an expanding range of resources and amenities, including an on-campus student residential option. The College also continuously engages the communities it serves through public service and cultural enrichment.

EGSC Carnegie Classification (Source: <http://carnegieclassifications.iu.edu/>)

Classification	Category (Classification Definitions)
Basic	<p><u>Baccalaureate/Associate's Colleges</u>: Includes four-year colleges (by virtue of having at least one baccalaureate degree program) that conferred more than 50 percent of degrees at the associate's level. Excludes Special Focus Institutions, Tribal Colleges, and institutions that have sufficient master's or doctoral degrees to fall into those categories. The formal expression of these classifications is (Classification):(Subset). For example:</p> <p>Baccalaureate/Associate's Colleges: Associate's Dominant.</p> <ul style="list-style-type: none"> • Mixed Baccalaureate/Associate's Colleges • Associate's Dominant
Undergraduate Instructional Program	<p><u>Baccalaureate/Associate's Colleges</u>: These institutions awarded both associate's and bachelor's degrees, but the majority of degrees awarded were at the associate's level.</p>
Graduate Instructional Program	(Not Classified)
Enrollment Profile	<p><u>Exclusively undergraduate four-year</u>: Fall enrollment data show only undergraduates enrolled at these bachelor's or higher degree granting institutions.</p>
Undergraduate Profile	<p><u>Full-time, inclusive, lower transfer-in</u>: Fall enrollment data indicate at least 80 percent of undergraduates are enrolled full-time at these bachelor's or higher degree granting institutions. These institutions either did not report test score data or the scores indicate that they extend educational opportunity to a wide range of students with respect to academic preparation and achievement. Fewer than 20 percent of entering undergraduates are transfer students.</p>
Size and Setting	<p><u>Four-year, small, primarily nonresidential</u>: Fall enrollment data indicate FTE* enrollment of 1,000–2,999 degree-seeking students at these bachelor's or higher degree granting institutions. Fewer than 25 % of degree-seeking undergraduates live on campus** and/or fewer than 50 % attend full time (includes exclusively distance education institutions).</p>

*FTE: Full-time equivalent enrollment was calculated as full-time plus one-third part-time.

**On campus is defined as institutionally-owned, -controlled, or -affiliated housing.

East Georgia State College Swainsboro Campus Map and Legend



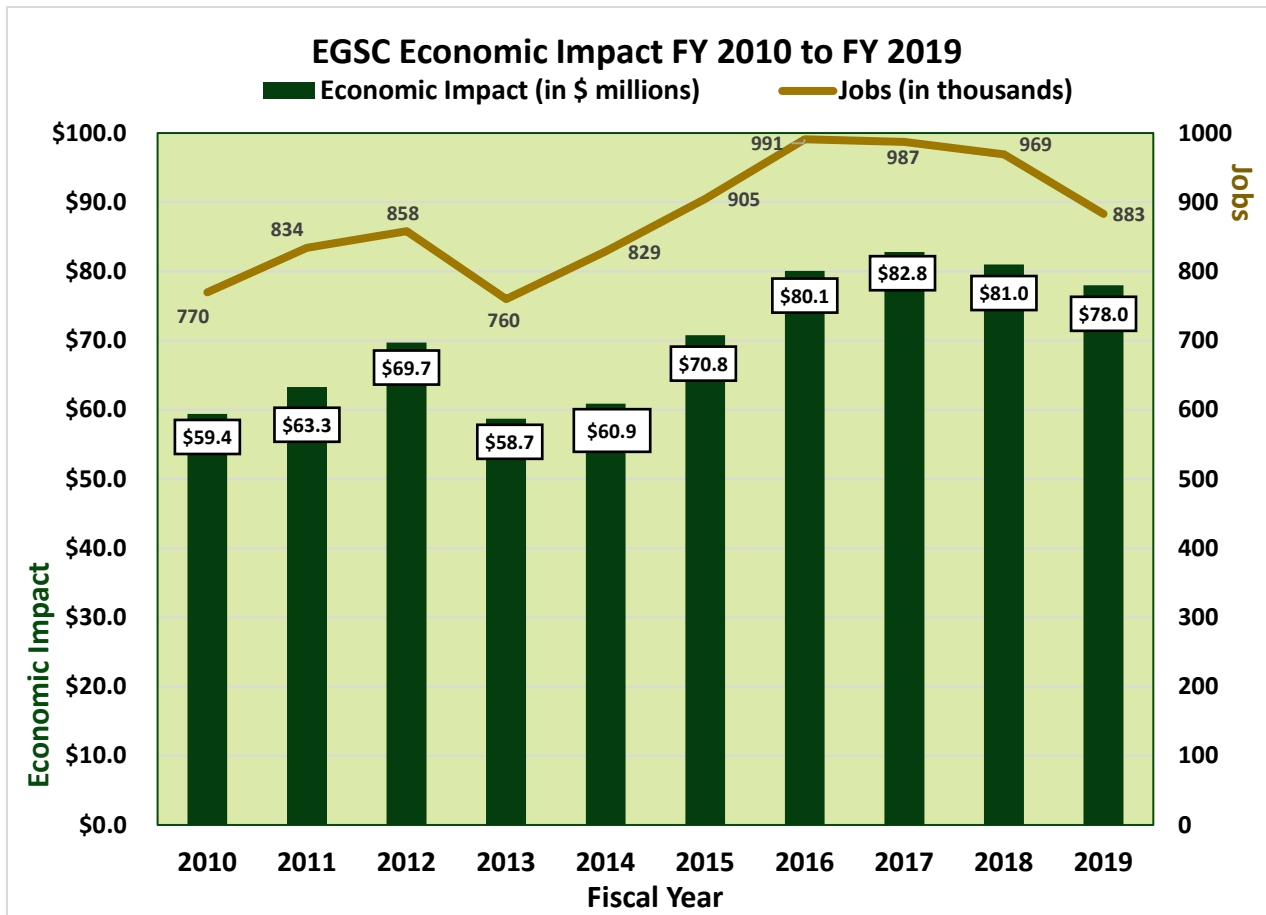
East Georgia State College Economic Impact: Fiscal Years 2009-2019

Source: Selig Center for Economic Growth
Terry College of Business
The University of Georgia

Year	Output Impact	Jobs
FY 2019	\$77,977,155	883
FY 2018	\$80,952,494	969
FY 2017	\$82,831,552	987
FY 2016	\$80,140,200	991
FY 2015	\$70,849,180	905
FY 2014	\$60,856,225	829
FY 2013	\$58,679,138	760
FY 2012	\$69,690,604	858
FY 2011	\$63,282,323	834
FY 2010	\$59,376,326	770

Service area as defined by Selig Center: Emanuel, Candler, Bulloch, Johnson, Jefferson, Toombs, Treutlen, and Jenkins

Source: EGSC Office of Institutional Advancement



The East Georgia State College FY 2021 – FY 2023 Strategic Plan Goals and Strategies

As a unit of the University System of Georgia (USG), EGSC bases its institutional goals on the USG vision statement and system goals. Presented below is the vision statement of the *USG Strategic Plan 2024*.

USG Vision Statement

The University System of Georgia will excel in meeting the needs of our state and economy through universities and colleges that: provide an affordable, accessible and high quality education; promote lifelong success of students; and create, disseminate and apply knowledge for the advancement of our state, nation and world.

Consistent with its role as an access institution within the USG, EGSC's four institutional goals are presented below.

1. **Student Success:** East Georgia State College provides access to innovative academic programs and engages in college completion initiatives, transforming students and equipping them with tools for success.
2. **Responsible Stewardship:** East Georgia State College uses innovative cost control measures to deliver high quality, affordable degree programs.
3. **Community Impact:** East Georgia State College provides a rich array of public service programs through its Sudie A. Fulford Community Center and Morgan House to the communities it serves.
4. **Economic Competitiveness:** East Georgia State College is a catalyst for economic development through a variety of initiatives and degree programs that nurture effective student leaders equipped to transform communities in innovative ways.

USG Goal/EGSC Institutional Goal Alignment and Strategies

Source: EGSC Office of Strategic Planning and Institutional Research

USG/EGSC Goals	Strategy No.	Strategy Description
Goal 1	Strategy 1	Strengthen Momentum Year Initiatives
	Strategy 2	Strengthen Dual Enrollment
	Strategy 3	Develop Strategic Recruiting Plan
	Strategy 4	Improve Access and Completion for Traditionally Underserved Students
	Strategy 5	Shorten Time of Credits to Degree
	Strategy 6	Restructure Instructional Delivery
Goal 2	Strategy 7	Strengthen Collaboration with Partner Institutions
	Strategy 8	Enhance Access and Utilization of Online Services
	Strategy 9	Provide and Maintain Safe State of the Art Facilities
	Strategy 10	Efficiently Provide Excellent Customer Relations
	Strategy 11	Manage Student Debt Effectively
Goal 3	Strategy 12	Strengthen Community Outreach
Goal 4	Strategy 13	Transform students into responsible citizens through the development of employment success skills, student leadership and community service
	Strategy 14	Position EGSC as a unique institution offering both liberal arts and career ready education through innovative degrees and programs aligned with the employment needs of the region



ADMINISTRATION

University System of Georgia Board of Regents

Regent	Residence	District	Term of Office
Sachin Shailendra (BOR Chair)	Atlanta	Thirteenth	2021-2028
Jade Joiner (Vice Chair)	Brookhaven	State-at-Large	2020-2027
James M. Hull	Augusta	State-at-Large	2016-2023
T. Dallas Smith	Atlanta	State-at-Large	2020-2027
Erin Hames	Atlanta	State-at-Large	2018-2023
Samuel D. Holmes	Atlanta	State-at-Large	2019-2026
Don L. Waters	Savannah	First	2018-2025
Bàrbara Rivera Holmes	Albany	Second	2018-2025
C. Thomas Hopkins, Jr.	Griffin	Third	2018-2024
Rachel B. Little	Loganville	Fourth	2019-2026
Sarah-Elizabeth Langford Reed	Atlanta	Fifth	2017-2024
Kessel Stelling, Jr.	Columbus	Sixth	2015-2022
Jose R Perez	Peachtree Corners	Seventh	2019-2026
W. Allen Gudenrath	Macon	Eighth	2018-2025
Philip A. Wilheit, Sr.	Gainesville	Ninth	2015-2022
Harold Reynolds	Greensboro	Tenth	2020-2027
Neil L. Pruitt, Jr.	Norcross	Eleventh	2017-2024
Everett Kennedy III	Statesboro	Twelfth	2020-2027
Lowery Houston May	Rome	Fourteenth	2020-2027

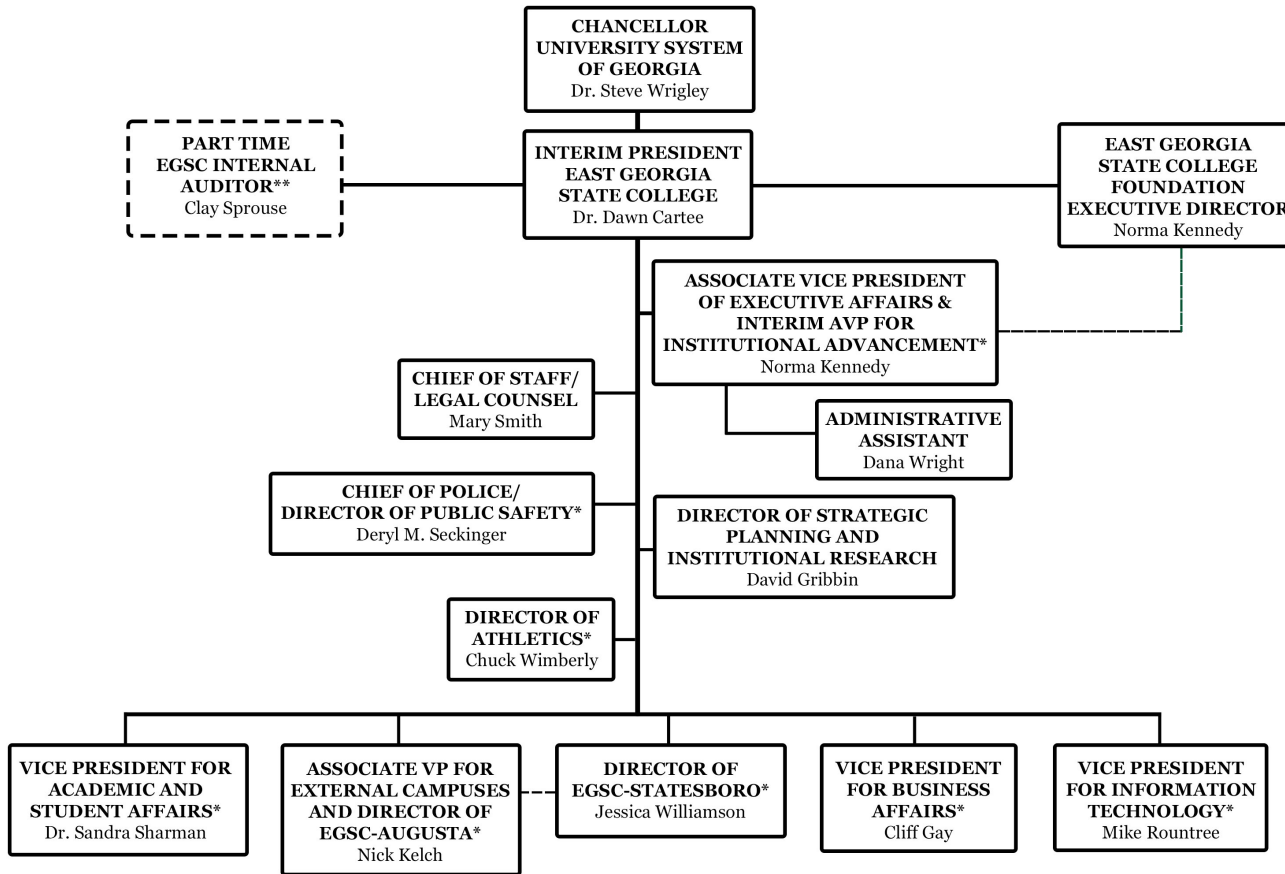
University System of Georgia Administrative Staff 2020-21

Position	Staff Member
Chancellor	Steve W. Wrigley
Chief of Staff, Vice Chancellor of External Affairs	Ashley Jones
Executive Vice Chancellor for Academic Affairs & Chief Academic Officer	Tristan Denley
Executive Vice Chancellor for Administration & Operations	Teresa McCartney
Executive Vice Chancellor for Strategy & Fiscal Affairs	Tracey Cook
Vice Chancellor for Academic Affairs	Martha Venn
Vice Chancellor – Communications & Governmental Affairs	Charles Sutlive
Vice Chancellor – Development	Karen McCauley
Vice Chancellor – Fiscal Affairs, Controller	Diane Hickey
Vice Chancellor – Human Resources	Juanita Hicks
Vice Chancellor – Information Technology Services & Chief Information Officer	Robert H. Laurine, Jr.
Vice Chancellor – Internal Audit	Claire M. Arnold
Vice Chancellor – Leadership & Institutional Development	Stuart Rayfield
Vice Chancellor – Legal Affairs	Edward Tate
Vice Chancellor – Organizational Effectiveness	John M. Fuchko, III
Vice Chancellor – Real Estate & Facilities	Sandra L. Neuse
Vice Chancellor – Research & Policy Analysis	Angela Bell
Vice Chancellor – Student Affairs	Joyce A. Jones
Associate Vice Chancellor – Faculty Development	Jeffery Galle
Associate Vice Chancellor – Strategic Academic Initiatives	Felita Williams
Associate Vice Chancellor – Distance Learning & Innovation	Jon Sizemore
Assistant Vice Chancellor – Academic Library Services & Executive Director for GALILEO	Lucy Harrison
Chief Information Security Officer	Alfred Barker
Chief of Police & Director of Safety & Security	Bruce Holmes
Executive Budget Director	Jason Matt
Executive Director of Economic Development	Matt Colvin
Executive Director of Georgia Film Academy	Jeffrey Stepakoff
State Librarian, Georgia Public Library Service	Julie Walker
Director of Georgia Archives	Christopher Davidson

Source: University System of Georgia Board of Regents

East Georgia State College Organization Charts

East Georgia State College Organizational Chart



As of January 12, 2021

*See separate organization chart for each of the above units

** Joint report to Interim President of EGSC and Augusta University

Source: Office of the President

East Georgia State College Organization Charts

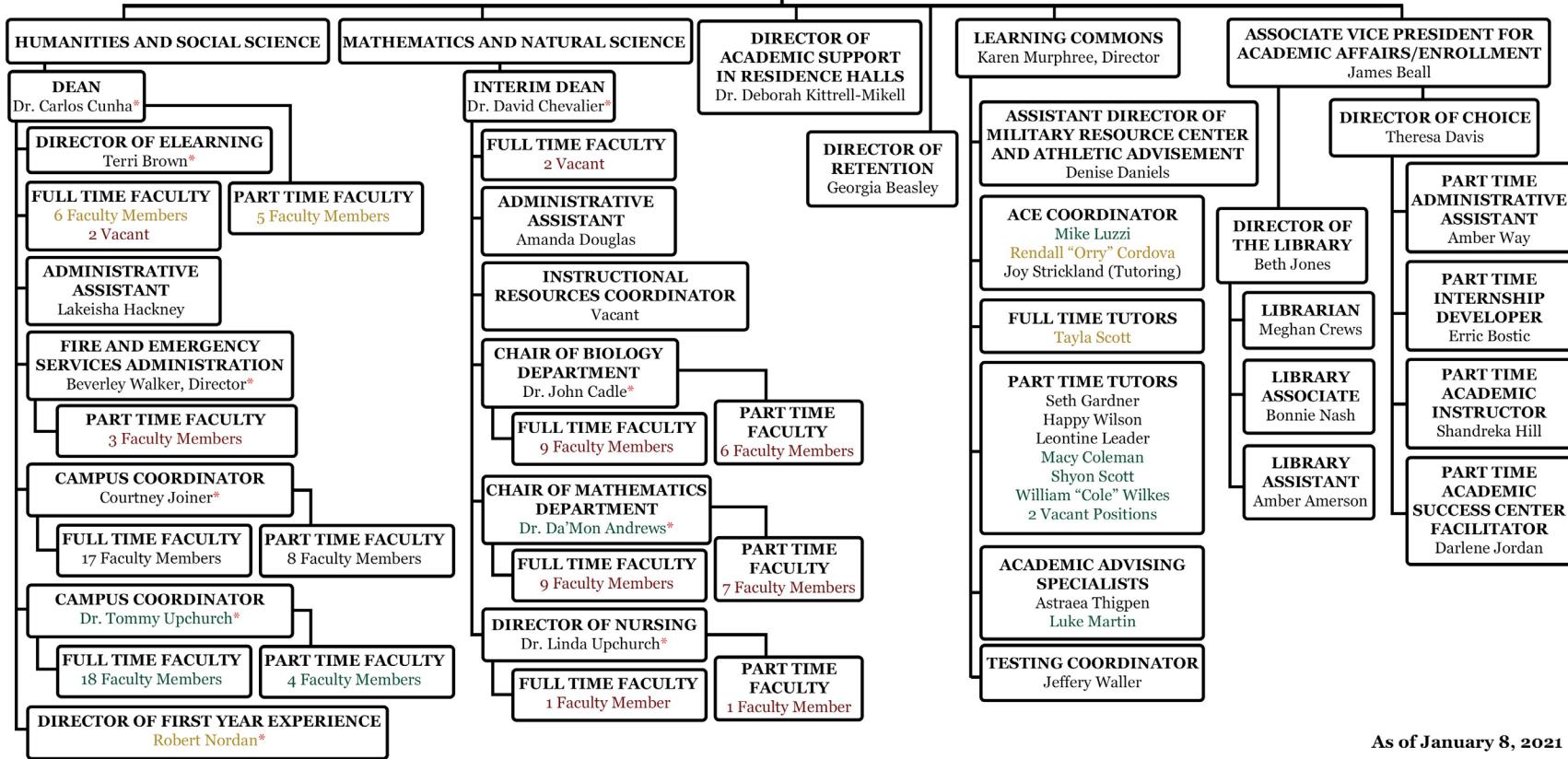
East Georgia State College - Academic Affairs Organizational Chart

Swainsboro Campus
Statesboro Campus
Augusta Campus
All Campuses

*Faculty

VICE PRESIDENT FOR ACADEMIC AND STUDENT AFFAIRS
Dr. Sandra Sharman

EXECUTIVE ASSISTANT
Megan Scruggs

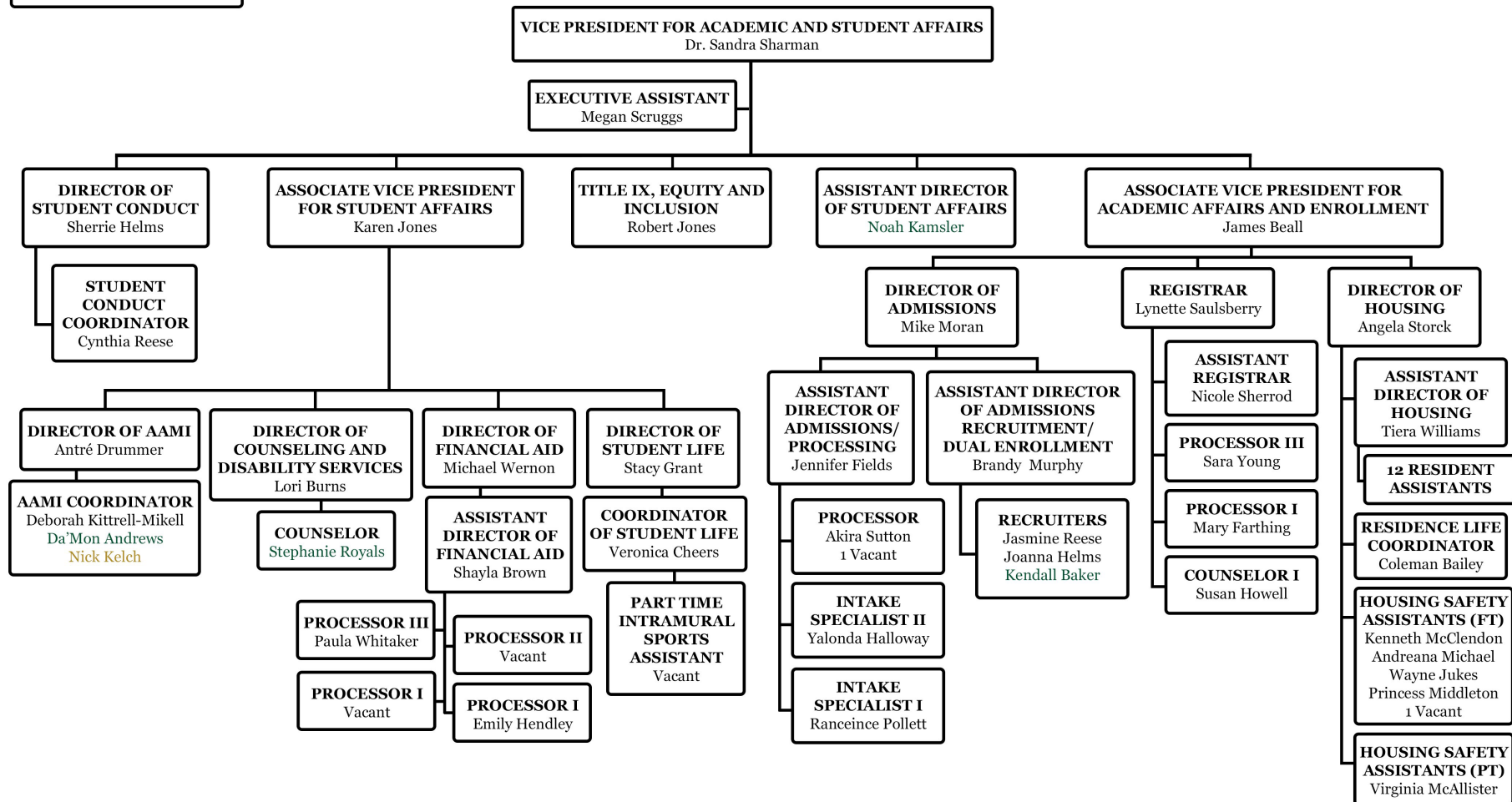


As of January 8, 2021

East Georgia State College Organization Charts

Swainsboro Campus
Statesboro Campus
Augusta Campus

East Georgia State College - Student Affairs Organizational Chart

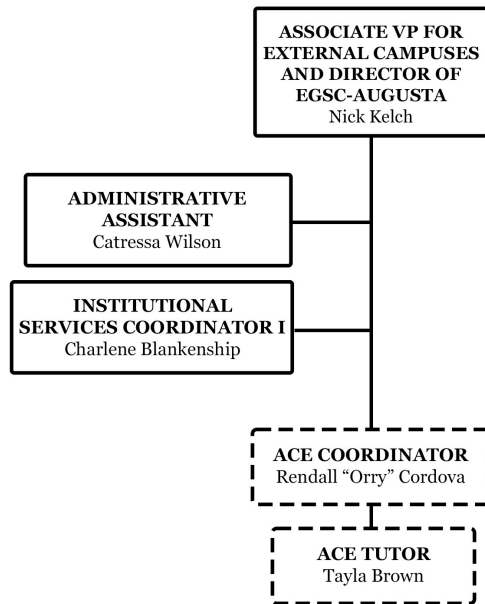


As of January 8, 2021

East Georgia State College Organization Charts

East Georgia State College - Augusta Organizational Chart

--- Joint Reporting

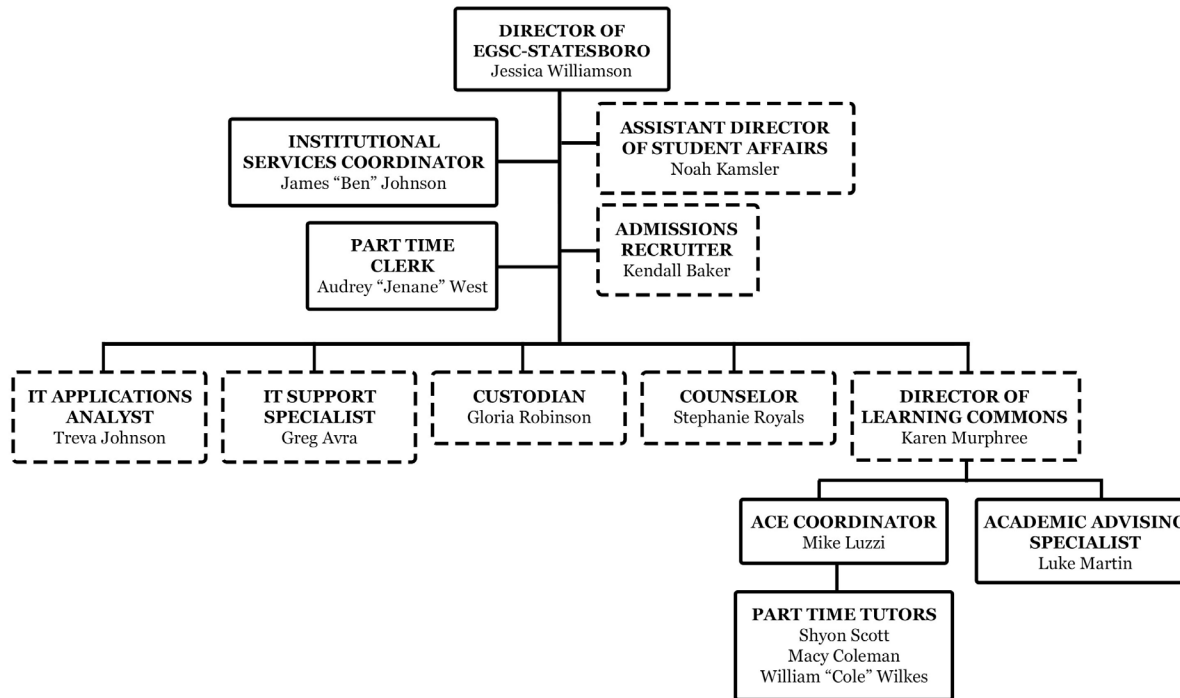


As of January 8, 2021

East Georgia State College Organization Charts

East Georgia State College - Statesboro Organizational Chart

--- Joint Reporting

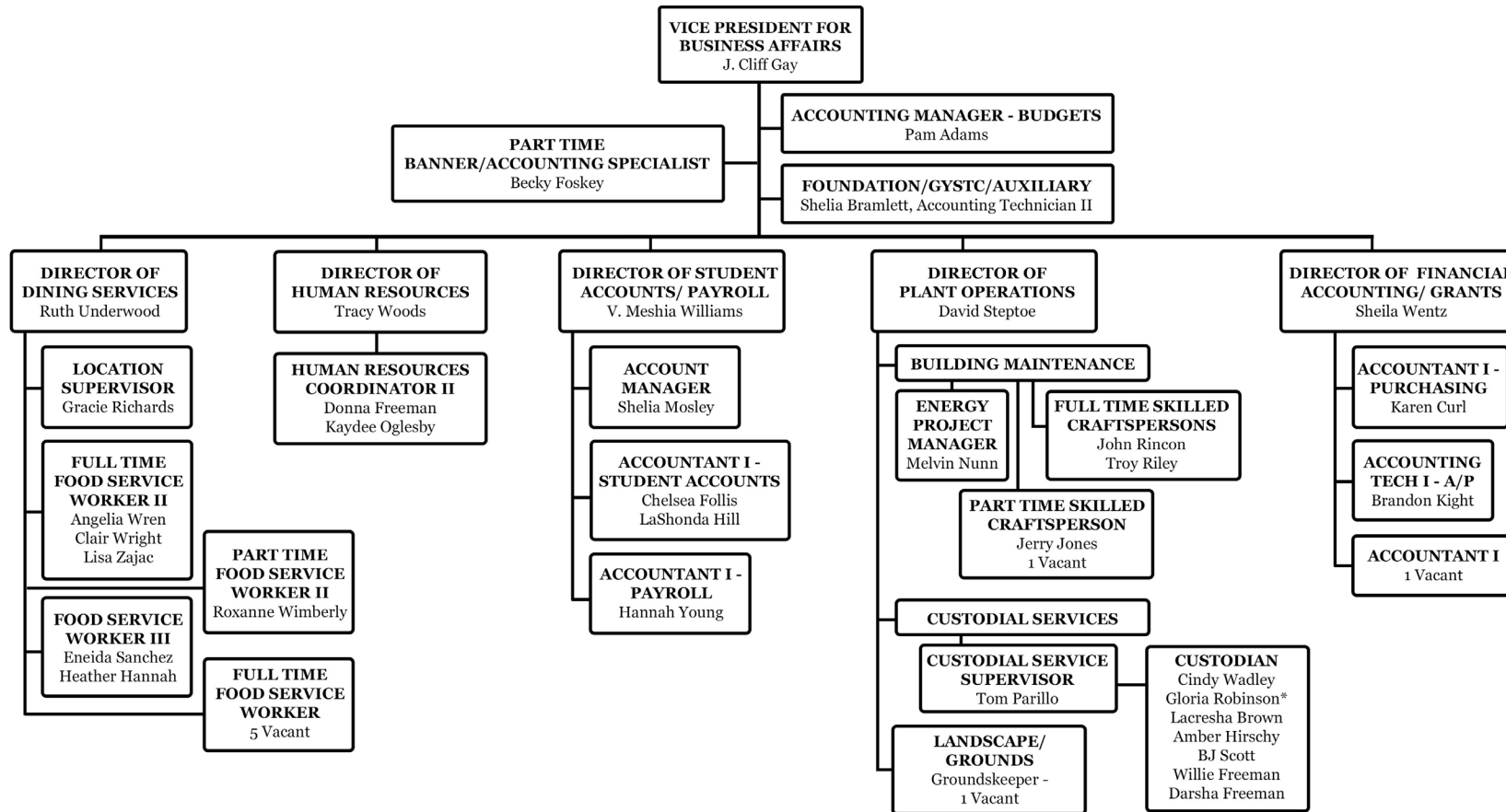


As of January 8, 2021

East Georgia State College Organization Charts

East Georgia State College - Business Affairs Organizational Chart

--- Joint Reporting



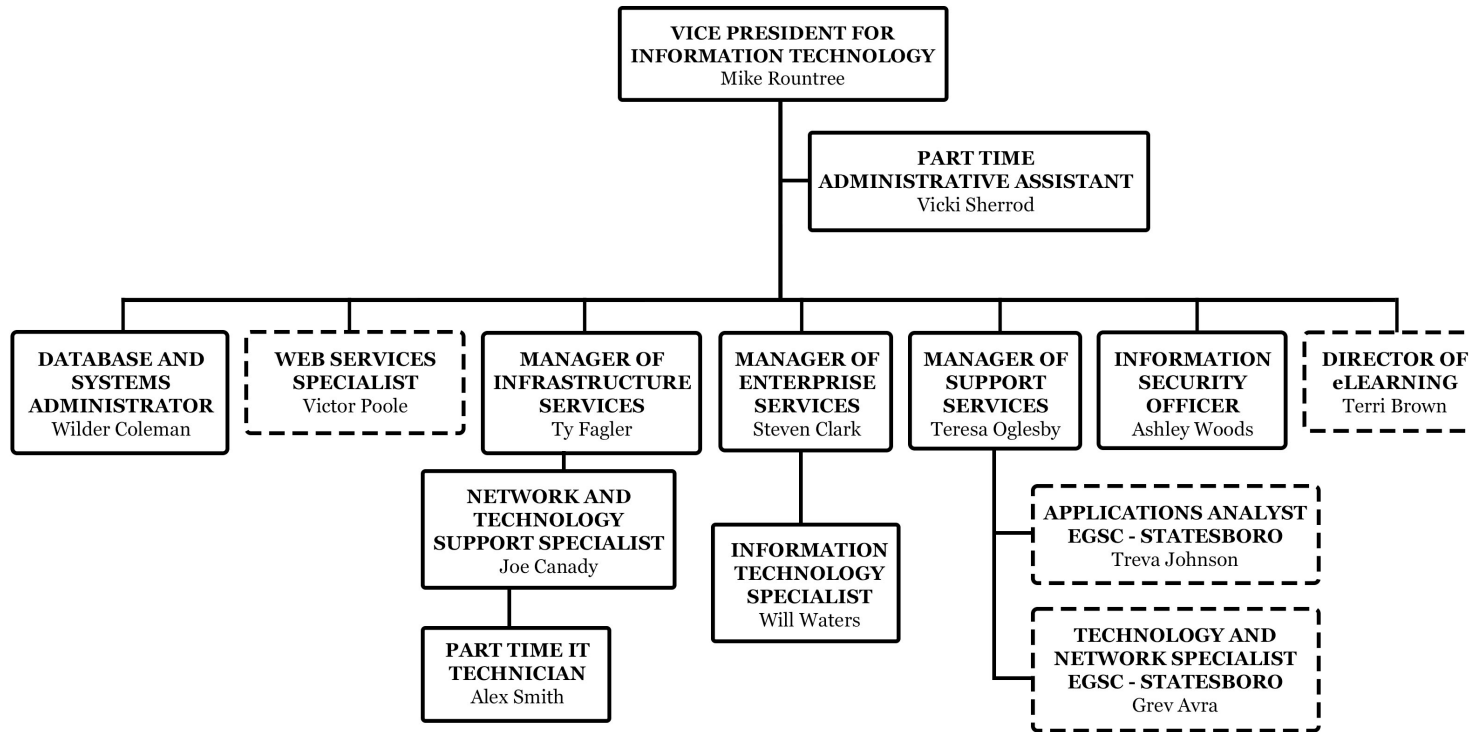
As of January 8, 2021

* Statesboro Campus

East Georgia State College Organization Charts

East Georgia State College - Information Technology Organizational Chart

--- Joint Reporting

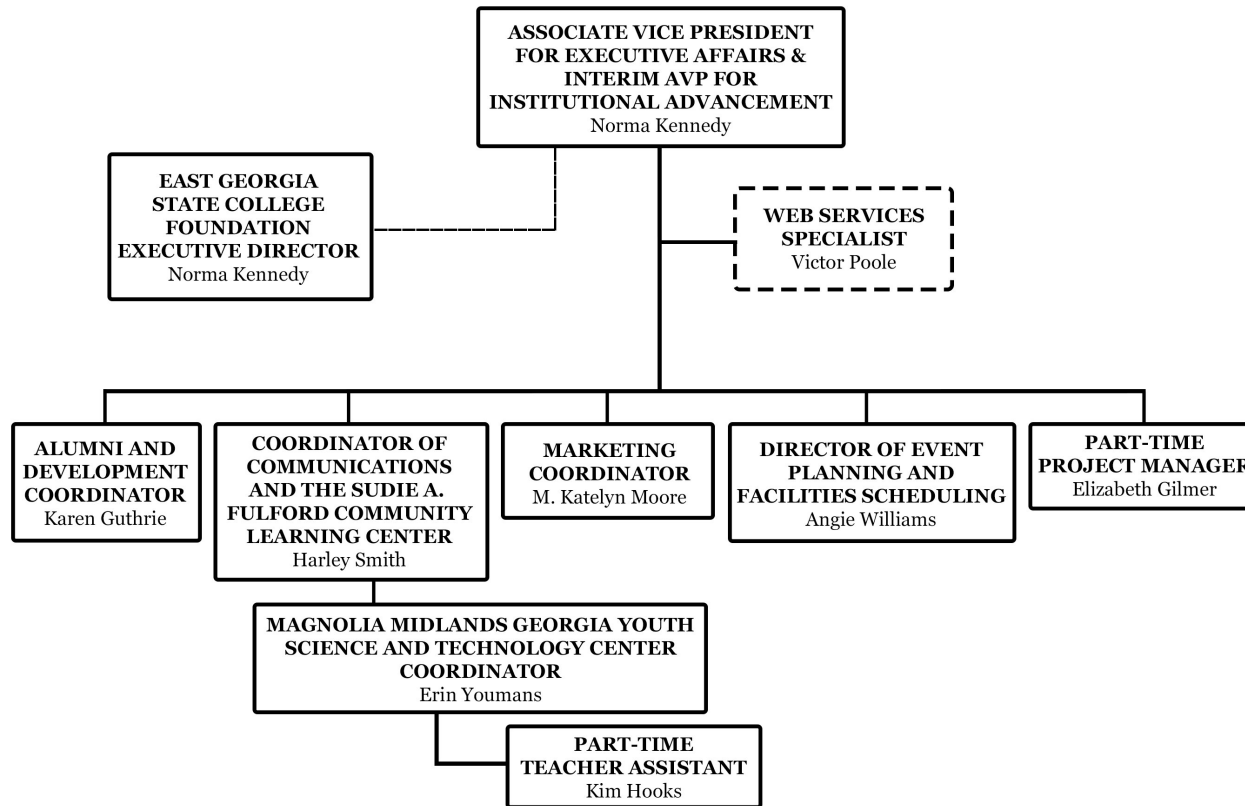


As of January 8, 2021

East Georgia State College Organization Charts

East Georgia State College - Institutional Advancement Organizational Chart

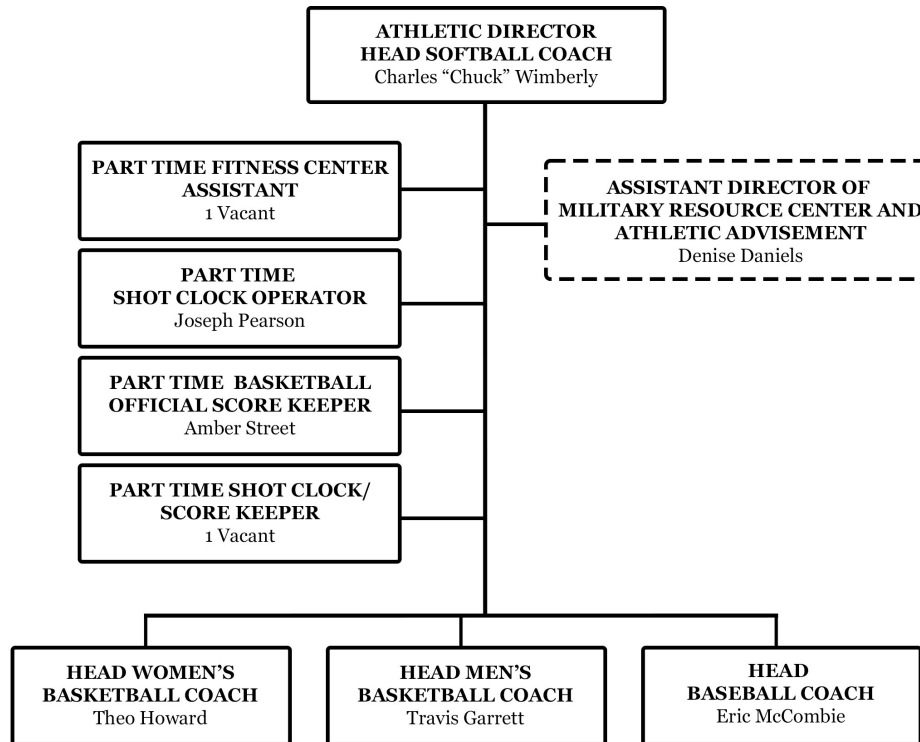
--- Joint Reporting



As of January 8, 2021

East Georgia State College Organization Charts

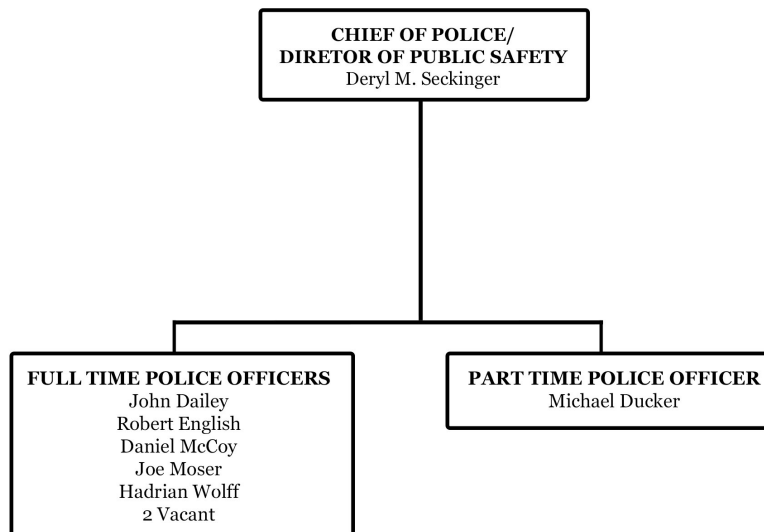
East Georgia State College - Athletic Department Organizational Chart



As of January 8, 2021

East Georgia State College Organization Charts

East Georgia State College - Police Department Organizational Chart



As of January 8, 2021

East Georgia State College Cabinet: December 2020

Dawn Cartee	Interim President of the College
Cliff Gay	Vice President for Business Affairs
David Gribbin	Director of Strategic Planning and Institutional Research
Nick Kelch	Associate Vice President for External Campuses
Norma Kennedy	Associate Vice President or Executive Affairs/Institutional Advancement
Mike Rountree	Vice President for Information Technology
Mack Seckinger	Chief of Police
Sandra Sharman	Vice President for Academic and Student Affairs
Mary Smith	Chief of Staff and Legal Counsel
Jessi Williamson	Director of EGSC Statesboro
Chuck Wimberly	Athletics Director

The East Georgia State College Foundation: 2020-21 Trustees

Last Name	First Name	Title/Alumnus	Status
McNeely	Richard	Chair	Elected
Gray	Milton	Vice-Chair Alumni	Elected
Key	Denny	Past Chair	Elected
Ray	Harriet	Secretary	Elected
Gay	Cliff	Treasurer-Alumni	Ex-officio-voting
Kennedy	Norma	Exec. Director-Alumnae	Ex-officio-voting
Cartee	Dr. Dawn	Executive Director	Ex-officio-voting
Andrews	Brandon		Elected
Denmark	Jennie Wren		Elected
Derden	Dr. John		Elected
Donaldson	Matt	Alumnus	Elected
Durden	Dustin		Elected
Fagler	Stephanie		Elected
Gray	Susan		Elected
Jenkins	Donald		Elected
Johnson	Wade		Elected
Porter	Juanita		Elected
Ridgon	Steven		Elected
Rogers, Jr.	Bill		Elected
Sasser	Dr. Bobby		Elected
Schwabe	Charles		Elected
Singletary	Guy	Alumnus	Elected
Terwilliger	Toni	Alumnus	Elected
Warnock	Ken	Alumnus	Elected
Wilkes	Tammy	Alumnus	Elected

Source: EGSC Office of Institutional Advancement



ADMISSIONS

East Georgia State College Fact Book 2021

Applied, Accepted and Registered Fall Semester 2011-2020

Fall Semester	Applied	Accepted	Registered	% of Applied Accepted	% of Applied Registered	% of Accepted Registered
2011	3,085	2,303	1,644	74.7%	53.3%	71.4%
2012	2,840	1,596	1,276	56.2%	44.9%	79.9%
2013	2,674	1,539	1,239	57.6%	46.3%	80.5%
2014	2,726	1,506	1,268	55.2%	46.5%	84.2%
2015	3,083	1,785	1,422	57.9%	46.1%	79.7%
2016	3,043	1,843	1,520	60.6%	50.0%	82.5%
2017	2,667	1,666	1,311	62.5%	49.2%	78.7%
2018	3,040	2,457	1,498	80.8%	49.3%	61.0%
2019	3,167	2,338	1,335	73.8%	42.2%	57.1%
2020	3,365	2,573	1,044	76.5%	31.0%	40.6%

Source: EGSC Office of Admissions

Beginning Freshmen: Fall Semester 2011-2020

Fall Semesters	2011	2012	2013	2014	2015	2016	2017	2018	2019	2020
Beginning Freshmen	1,579	1,238	975	1,007	1,095	1,006	954	1,086	1,037	678

Mean Scholastic Aptitude Test (Old SAT) Scores for Beginning Freshmen: Fall Semester 2011-2020

Fall Semesters	2011	2012	2013	2014	2015	2016	2017	2018	2019	2020
Old SAT Average	847	863	870	873	864	864	856	877	915	857

Mean Scholastic Aptitude Test (New SAT) Scores for Beginning Freshmen: Fall Semester 2016-2020

Fall Semesters	2016	2017	2018	2019	2020
New SAT Average	47	47	48	47	48

Source: EGSC Office of Strategic Planning and Institutional Research

East Georgia State College Fact Book 2021

Georgia High Schools of Beginning Freshmen: Fall 2020

High Schools	Augusta	Statesboro	Swainsboro	Total
Evans High School	16	4	4	24
Swainsboro High School		1	21	22
Appling County Comprehensive H		18	2	20
Tattnall County High School		12	8	20
Effingham County High School		12	7	19
Grovetown High School	13	1	4	18
Jefferson County High School	4	3	11	18
Statesboro High School		16		16
Academy of Richmond County	12	2	1	15
Lakeside High School-Evans	8	3	4	15
Westside High School	7	3	3	13
Vidalia High School		2	10	12
Richmond County Tech Career School	8		3	11
Richmond Hill High School		5	6	11
Toombs County High School		4	7	11
Greenbrier High School	6	3	1	10
Metter High School		4	6	10
Washington County High School		1	9	10
Subtotal: 18 High Schools, 10 or more				275
Subtotal: 212 High Schools, Less than 10				403
Total: 230 High Schools				678

Source: EGSC Office of Strategic Planning and Institutional Research



STUDENT FINANCIAL INFORMATION

East Georgia State College Fact Book 2021

Semester Tuition and Fees Fall 2020 – Spring 2021

(See [College Affordability and Transparency Center](#) **Lowest Tuition and Lowest Net Price Lists, 4-Year Public**)

In State Tuition and Fees

Credit Hours	In State Tuition	EGSC Augusta †		EGSC Statesboro ‡		Swainsboro	
		Fees	Tuition & Fees	Fees	Tuition & Fees	Fees	Tuition & Fees
15	1,425.00	965.00	2,390.00	1,181.00	2,592.00	428.00	1,853.00
14	1,330.00	965.00	2,295.00	1,181.00	2,497.00	428.00	1,758.00
13	1,235.00	965.00	2,200.00	1,181.00	2,402.00	428.00	1,663.00
12	1,140.00	965.00	2,105.00	1,181.00	2,307.00	428.00	1,568.00
11	1,045.00	965.00	2,010.00	1,181.00	2,212.00	428.00	1,473.00
10	950.00	965.00	1,915.00	1,181.00	2,117.00	428.00	1,378.00
9	855.00	965.00	1,820.00	1,181.00	2,022.00	428.00	1,283.00
8	760.00	965.00	1,725.00	1,181.00	1,927.00	428.00	1,188.00
7	665.00	965.00	1,630.00	1,181.00	1,832.00	428.00	1,093.00
6	570.00	965.00	1,535.00	1,181.00	1,737.00	428.00	998.00
5	475.00	965.00	1,440.00	1,181.00	1,642.00	428.00	903.00
4	380.00	865.00	1,245.00	1,181.00	1,447.00	328.00	708.00
3	285.00	765.00	1,050.00	325.00	585.00	195.00	480.00
2	190.00	765.00	955.00	325.00	490.00	195.00	385.00
1	95.00	765.00	860.00	325.00	395.00	195.00	290.00

EGSC Augusta †: Fees include \$615 Augusta University - Summerville fee at every credit hour level

EGSC Statesboro ‡: Fees include \$656 Georgia Sothern University fee for 4 or more credit hours

Out of State Tuition and Fees

Credit Hours	Out of State Tuition	EGSC Augusta †		EGSC Statesboro ‡		Swainsboro	
		Fees	Tuition & Fees	Fees	Tuition & Fees	Fees	Tuition & Fees
15	5,395.00	965.00	6,360.00	1,181.00	6,562.00	428.00	5,823.00
14	5,035.38	965.00	6,000.38	1,181.00	6,202.38	428.00	5,463.38
13	4,675.71	965.00	5,640.71	1,181.00	5,842.71	428.00	5,103.71
12	4,316.04	965.00	5,281.04	1,181.00	5,483.04	428.00	4,744.04
11	3,956.37	965.00	4,921.37	1,181.00	5,123.37	428.00	4,384.37
10	3,596.70	965.00	4,561.70	1,181.00	4,763.70	428.00	4,024.70
9	3,237.03	965.00	4,202.03	1,181.00	4,404.03	428.00	3,665.03
8	2,877.36	965.00	3,842.36	1,181.00	4,044.36	428.00	3,305.36
7	2,517.69	965.00	3,482.69	1,181.00	3,684.69	428.00	2,945.69
6	2,158.02	965.00	3,123.02	1,181.00	3,325.02	428.00	2,586.02
5	1,798.35	965.00	2,763.35	1,181.00	2,965.35	428.00	2,226.35
4	1,438.68	865.00	2,303.68	1,181.00	2,505.68	328.00	1,766.68
3	1,079.01	765.00	1,844.01	325.00	1,379.01	195.00	1,274.01
2	719.34	765.00	1,484.34	325.00	1,019.34	195.00	914.34
1	359.67	765.00	1,124.67	325.00	659.67	195.00	554.67

East Georgia State College Fact Book 2021

EGSC Six SACSCOC Peer Colleges

Atlanta Metropolitan State College (Atlanta, GA)

Florida Gateway College (Lake City, FL)

Georgia Highlands College (Rome, GA)

Lake-Sumter State College (Leesburg, FL)

Santa Fe College (Gainesville, FL)

South Georgia State College (Douglas, GA)

EGSC Fifteen IPEDS Peer Colleges:

Atlanta Metropolitan State College (Atlanta, GA)

Bismarck State College (Bismarck, ND)

Centralia College (Centralia, WA)

Clover Park Technical College (Lakewood, WA)

Columbia Basin College (Pasco, WA)

Florida Gateway College (Lake City, FL)

Georgia Highlands College (Rome, GA)

Kent State University at Ashtabula (Ashtabula, OH)

Kent State University at Tuscarawas (New Philadelphia, OH)

Lake-Sumter State College (Leesburg, FL)

Ohio University-Chillicothe Campus (Chillicothe, OH)

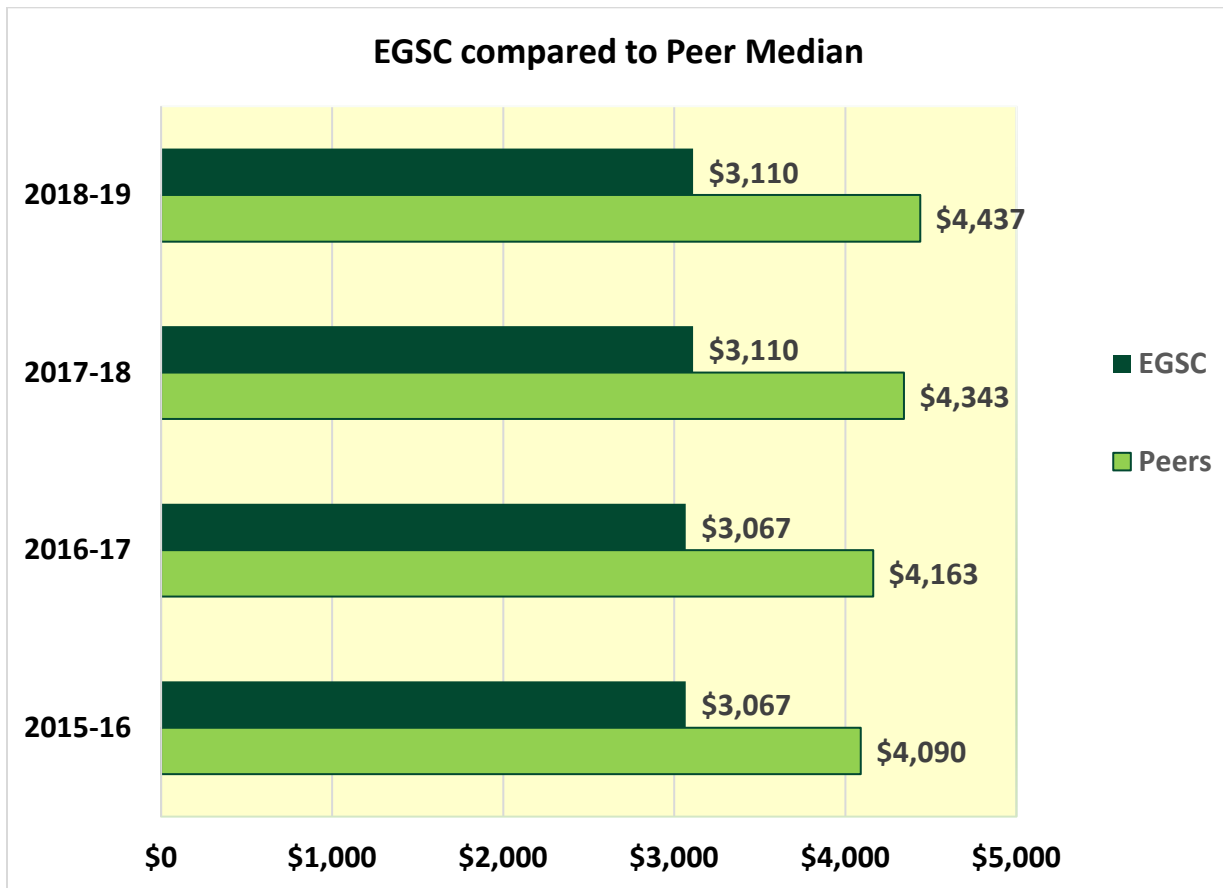
Ohio University-Eastern Campus (Saint Clairsville, OH)

Santa Fe College (Gainesville, FL)

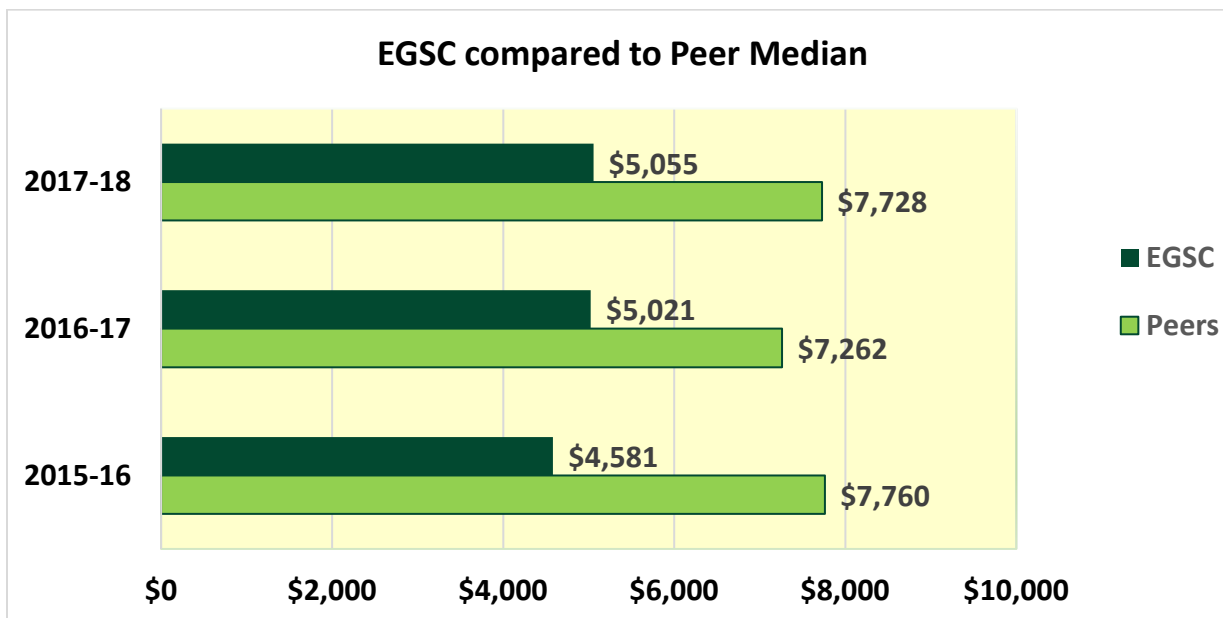
South Georgia State College (Douglas, GA)

Yakima Valley College (Yakima, WA)

Academic Year Tuition and Fees for Full-Time, First Time Undergraduates

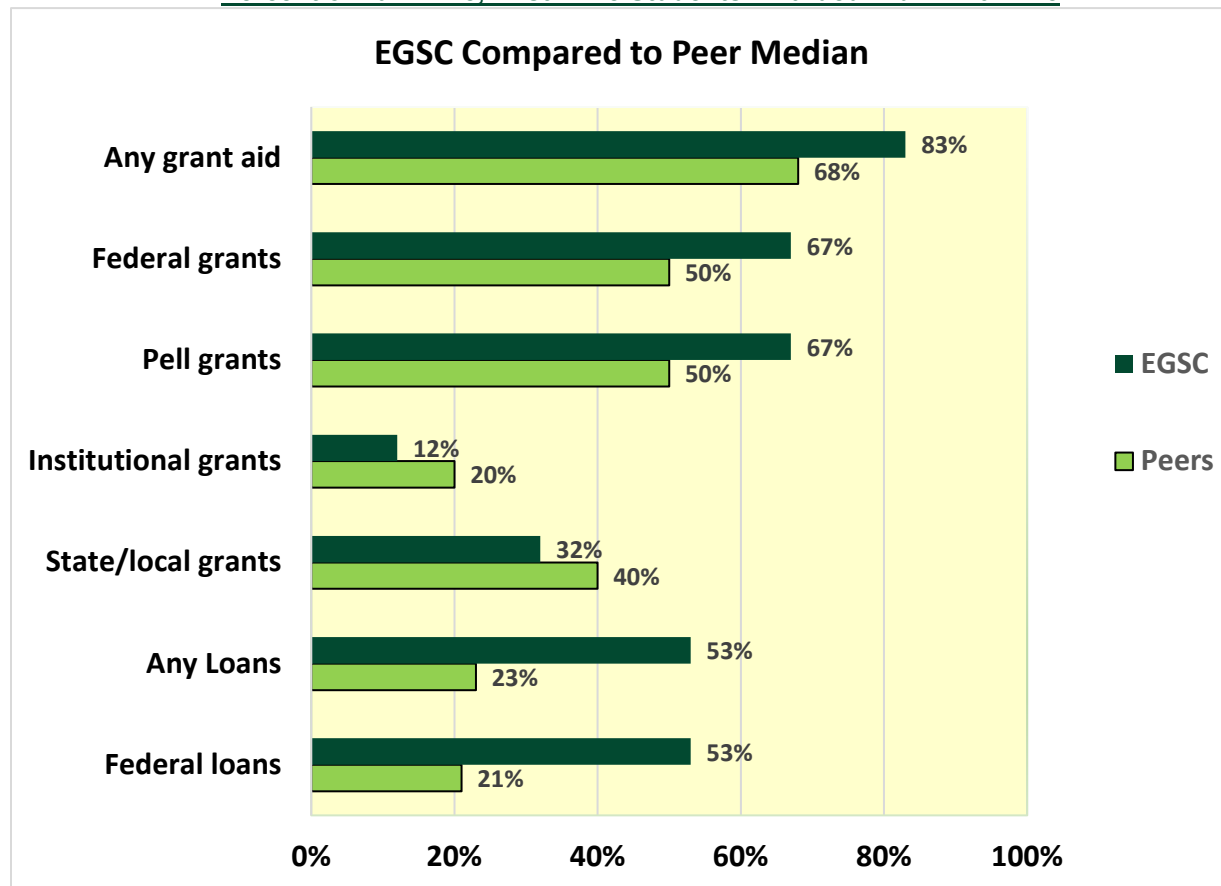


Academic Year Average Net Price of Attendance for Full-Time, First Time Undergraduates

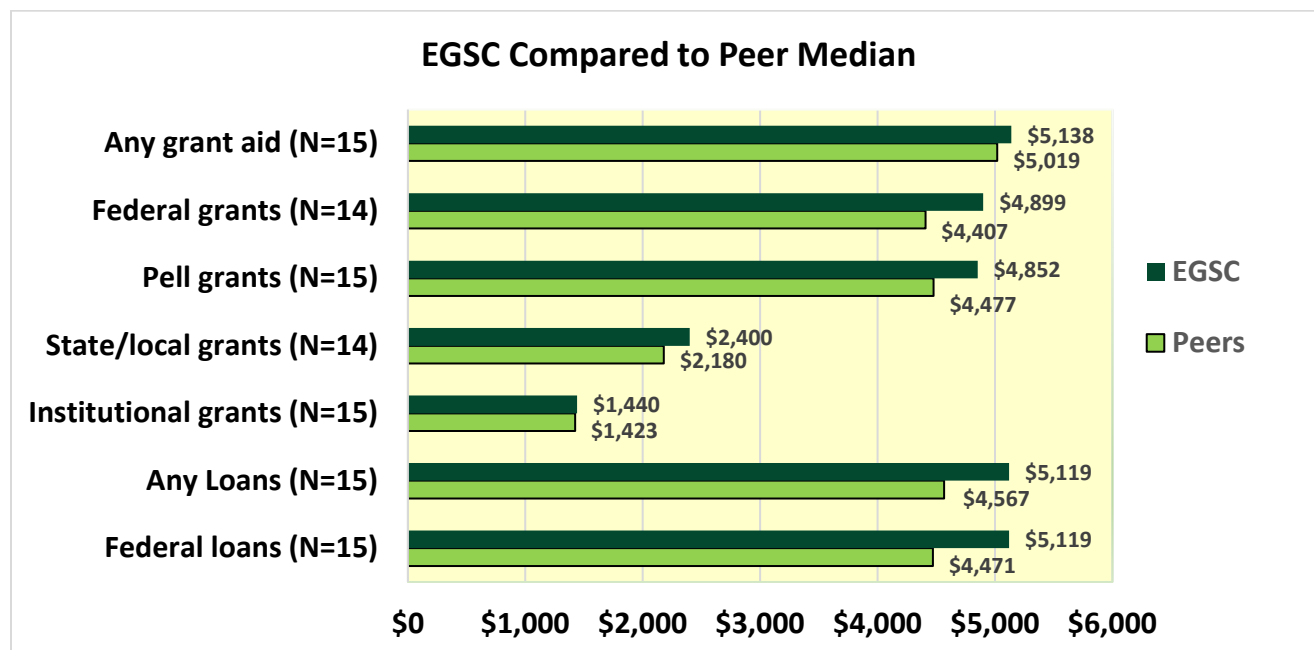


Source: IPEDS (Integrated Postsecondary Education Data System)

Percent of Full-Time, First-Time Students Awarded Aid FY 2017-18



Average Amount Awarded of Full-Time, First-Time Students Awarded Aid FY 2017-18



Source: IPEDS (Integrated Postsecondary Education Data System)



ACADEMIC INFORMATION

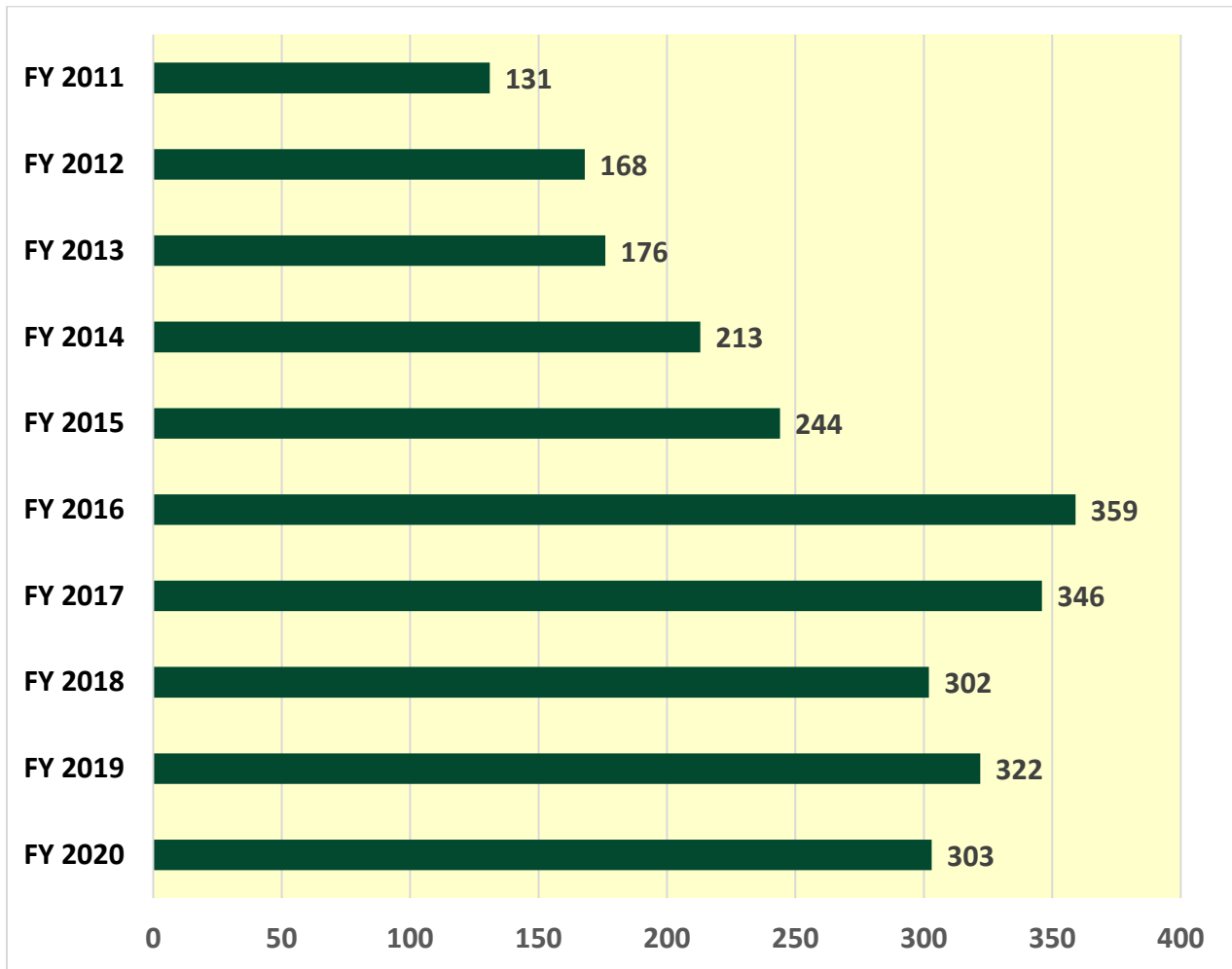
East Georgia State College Degree List
with Classification of Instructional Program (CIP) Codes

Degree Acronym	CIP CODE	Degree Level	Degree Description
AA	09010001	Associate	Associate of Arts in Communication Arts*
AA	13041401	Associate	Associate of Arts in Elementary Education*
AA	23010101	Associate	Associate of Arts in English*
AA	42010101	Associate	Associate of Arts in Psychology*
AA	43010401	Associate	Associate of Arts in Criminal Justice*
AA	43020202	Associate	Associate of Arts in Fire and Emergency Services Administration*
AA	45100101	Associate	Associate of Arts in Political Science*
AA	45110101	Associate	Associate of Arts in Sociology*
AA	50070101	Associate	Associate of Arts in Art*
AA	54010101	Associate	Associate of Arts in History*
AACC	24010101	Associate	Associate of Arts, Core Curriculum
AS	26010101	Associate	Associate of Science in Biology*
AS	27010101	Associate	Associate of Science in Mathematics*
AS	36010101	Associate	Associate of Science in Recreation*
AS	40050101	Associate	Associate of Science in Chemistry*
AS	52020101	Associate	Associate of Science in Business Administration*
BA	43020201	Bachelor	Bachelor of Arts with a Major in Fire and Emergency Services Administration
BS	26010101	Bachelor	Bachelor of Science with a Major in Biology
BS	51380105	Bachelor	Bachelor of Science with a Major in Nursing, RN to BSN*
CER0	50060501	Certificate (less than 1 Year)	Certificate of Less than One Year in Digital Photography

(*Effective Fall Semester 2017)

Source: EGSC Office of Strategic Planning and Institutional Research

EGSC Degrees Conferred FY 2011 to FY 2020



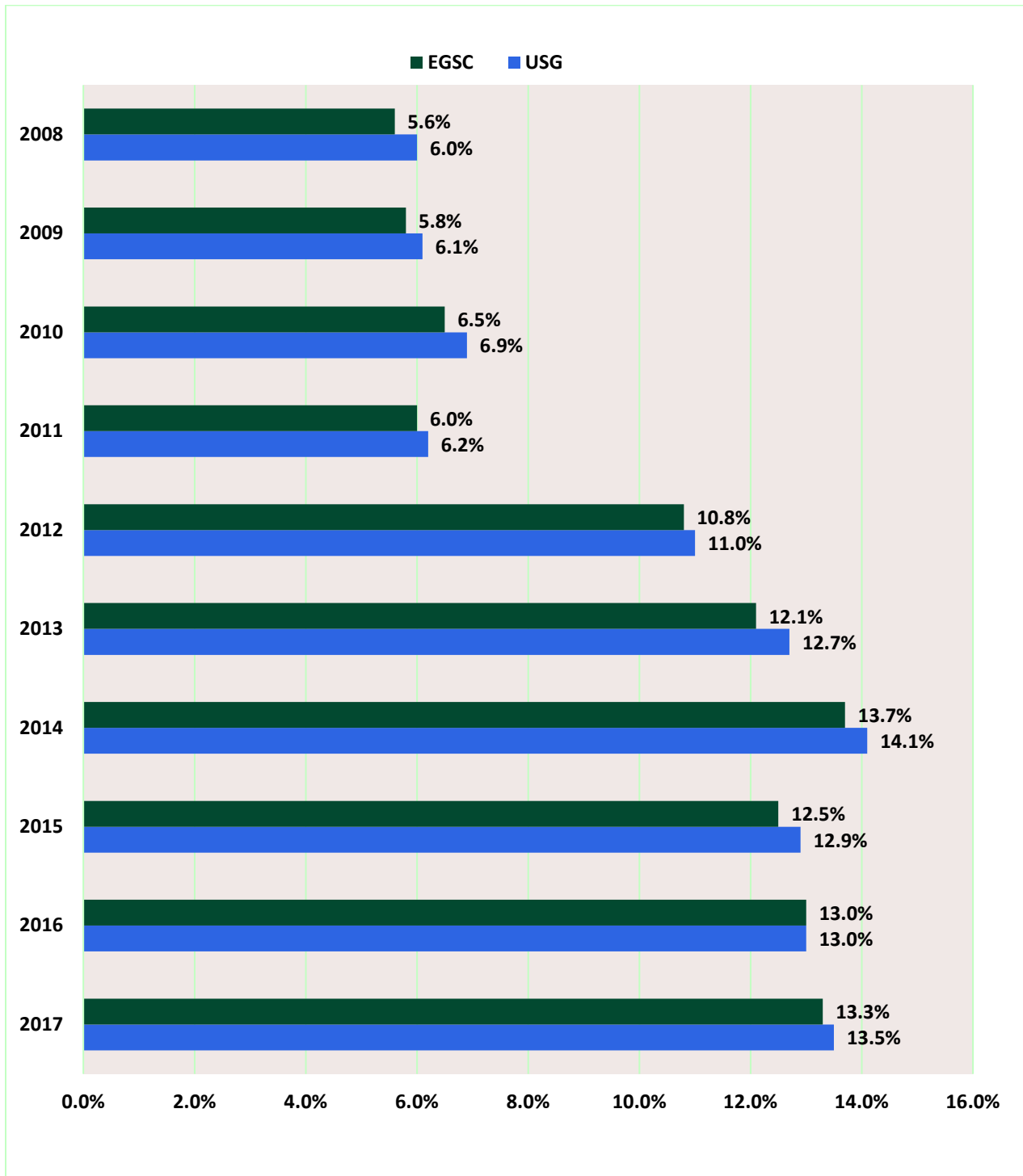
Source: University System of Georgia Office of Research and Policy Analysis

Degrees Conferred by Academic Program FY 2017-18 – FY 2019-20

CIP Code and Degree	Academic Program	FY 2017-18	FY 2018-19	FY 2019-20	
24.0101. Associate of Arts	Core Curriculum	200	163	151	
42.0101. Associate of Arts	Psychology*	29	31	38	
52.0201. Associate of Science	Business Administration*	15	25	31	
51.3801. Bachelor of Science	Nursing, RN to BSN*	-	22	11	
13.0414. Associate of Arts	Elementary Education*†	13	14	17	
45.1101. Associate of Arts	Sociology*	14	13	8	
43.0104. Associate of Arts	Criminal Justice*	10	11	9	
54.0101. Associate of Arts	History*	3	10	1	
40.0501. Associate of Science	Chemistry*	2	6	5	
45.1001. Associate of Arts	Political Science*	4	5	3	
50.0701. Associate of Arts	Art*	3	4	6	
26.0101. Associate of Science	Biology*	1	4	5	
26.0101. Bachelor of Science	Biology	3	2	3	
43.0202. Associate of Arts	Fire and Emergency Services Administration*	1	2	3	
43.0202. Bachelor of Arts	Fire and Emergency Services Administration	2	3	7	
23.0101. Associate of Arts	English*	-	3	1	
09.0100. Associate of Arts	Communication Arts*	2	2	3	
27.0101. Associate of Science	Mathematics*	-	2	1	
*Academic Programs begun Fall Semester 2017		Total	302	322	303
†Formally Early Childhood Education		Associate Degrees	297	295	282
		Bachelor Degrees	5	27	21

Source: University System of Georgia Office of Research and Policy Analysis

EGSC/USG 3 Year Graduation Rates for First-Time, Full-Time Cohorts



Source: University System of Georgia Office of Research and Policy Analysis

Distribution of Grades by Class: Academic Year 2019-20

Fall 2019	A	B	C	D	F	I	IP	W	WF	Other	Total
Freshman	22.9%	21.0%	17.4%	8.6%	22.2%	0.1%	1.2%	5.8%	0.3%	0.4%	100.0%
Sophomore	33.0%	26.1%	17.7%	6.1%	10.9%	0.1%	0.0%	6.0%	0.1%	0.0%	100.0%
Junior	37.3%	24.6%	13.0%	6.6%	13.0%	0.0%	0.0%	5.2%	0.3%	0.0%	100.0%
Senior	55.9%	24.5%	5.9%	2.0%	9.8%	0.0%	0.0%	2.0%	0.0%	0.0%	100.0%

Spring 2020	A	B	C	D	F	I	IP	W	WF	Other	Total
Freshman	26.4%	19.5%	14.6%	7.4%	24.3%	0.1%	1.1%	6.1%	0.6%	0.0%	100.0%
Sophomore	43.1%	24.5%	14.5%	5.4%	8.2%	0.2%	0.0%	4.1%	0.0%	0.0%	100.0%
Junior	39.1%	24.7%	13.4%	5.9%	11.3%	0.7%	0.0%	4.9%	0.0%	0.0%	100.0%
Senior	69.2%	12.5%	6.7%	1.9%	6.7%	0.0%	0.0%	2.9%	0.0%	0.0%	100.0%

Participation in Education Abroad at the East Georgia State College: Academic Years 2009-10 through 2018-19 (Source: EGSC Study Abroad Director)

EGSC Study Abroad Program (interrupted by COVID-19 in 2020)	No. Students 2010-2019
EGSC Study Abroad Students by Location	
Costa Rica (UGA Campus)	56
Italy	6
Paris (European Council)	2
Cuba	1
South Korea (Council on International Education Exchange)	1
EGSC Study Abroad Students by Ethnicity	
White (Non-Hispanic)	53
African American	10
Hispanic	3

Library Resources FY 2017-18 (Source: IPEDS EGSC Academic Libraries Spring 2020 Survey)

Library Collections/Circulation	Physical Collection	Digital/Electronic Collection
Books	46,518	620,135
Databases		275
Media	1,380	37,394
Serials	39	90,618
Total Collection	47,937	748,422
Total Circulation	3,795	250,043

Library Visitors, Fiscal Years 2015-16 to 2019-20

Fiscal Years	Total Visits
FY 2015-16	87,499
FY 2016-17	91,179
FY 2017-18	85,885
FY 2018-19	81,265
FY 2019-20	72,026

Source: EGSC Library

Credits Hours Earned to Attempted by Semester and Course Delivery Summer 2011 – Spring 2020

Semester	Credits Earned	Credits Attempted	Percent Completion
Summer 2011	5,810	8,475	68.6%
Summer 2012	4,239	6,131	69.1%
Summer 2013	4,506	5,889	76.5%
Summer 2014	3,861	4,771	80.9%
Summer 2015	4,069	5,002	81.3%
Summer 2016	4,472	5,573	80.2%
Summer 2017	4,646	5,644	82.3%
Summer 2018	4,769	5,860	81.4%
Summer 2019	4,469	5,489	81.4%
Fall 2011	23,003	40,948	56.2%
Fall 2012	23,336	34,898	66.9%
Fall 2013	23,713	34,040	69.7%
Fall 2014	24,411	34,955	69.8%
Fall 2015	26,192	36,147	72.5%
Fall 2016	26,793	36,400	73.6%
Fall 2017	25,421	34,698	73.3%
Fall 2018	23,802	33,698	70.6%
Fall 2019	22,706	31,817	71.4%
Spring 2012	21,787	36,133	60.3%
Spring 2013	21,161	31,411	67.4%
Spring 2014	21,383	30,985	69.0%
Spring 2015	21,924	30,568	71.7%
Spring 2016	23,176	31,649	73.2%
Spring 2017	22,845	31,157	73.3%
Spring 2018	21,684	29,758	72.9%
Spring 2019	21,102	29,165	72.4%
Spring 2020	20,179	27,252	74.0%
Total Credit Hours	455,459	648,513	70.2%
Taking Face to Face Only Total	241,347	356,566	67.7%
Taking Online Only Total	41,280	58,322	70.8%
Taking Face to Face and Online Total	172,832	233,625	74.0%

Source: EGSC Office of Strategic Planning and Institutional Research

A horizontal banner with a colorful geometric pattern of overlapping circles and diamonds in shades of purple, brown, yellow, and blue. The word "ENROLLMENT" is written in white, bold, uppercase letters across the center of the banner.

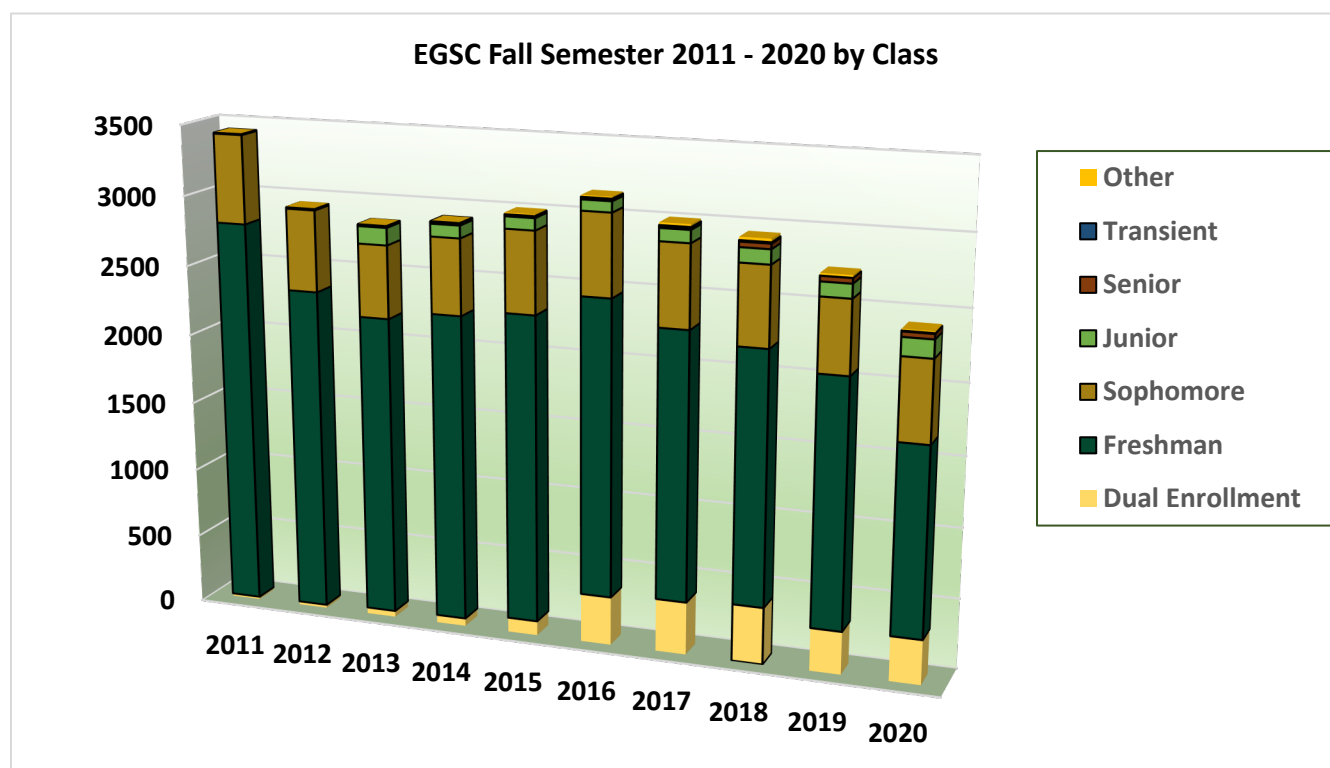
ENROLLMENT

Enrollment Counts by Class Level: Fall Semesters 2011-2020

Fall Semester	2011	2012	2013	2014	2015	2016	2017	2018	2019	2020
Dual Enrollment	18	23	44	56	104	349	379	408	307	320
Freshman	2,776	2,323	2,152	2,203	2,203	2,116	1,913	1,801	1,765	1,341
Sophomore	631	581	520	542	583	581	584	562	514	574
Junior			123	89	85	76	89	102	99	127
Senior			8	9	7	12	10	37	37	36
Transient	6	10	4	7	7	5	9	9	1	5
Other	4	7	6	4	12	13	19	23	18	12
Fall Term Total Enrollment	3,435	2,944	2,857	2,910	3,001	3,152	3,003	2,942	2,741	2,415

Enrollment Percentages by Class Level: Fall Semesters 2011-2020

Fall Semester	2011	2012	2013	2014	2015	2016	2017	2018	2019	2020
Dual Enrollment	0.5%	0.8%	1.5%	1.9%	3.5%	11.1%	12.6%	13.9%	11.2%	13.3%
Freshman	80.8%	78.9%	75.3%	75.7%	73.4%	67.1%	63.7%	61.2%	64.4%	55.5%
Sophomore	18.4%	19.7%	18.2%	18.6%	19.4%	18.4%	19.4%	19.1%	18.8%	23.8%
Junior			4.3%	3.1%	2.8%	2.4%	3.0%	3.5%	3.6%	5.3%
Senior			0.3%	0.3%	0.2%	0.4%	0.3%	1.3%	1.3%	1.5%
Transient	0.2%	0.3%	0.1%	0.2%	0.2%	0.2%	0.3%	0.3%	0.0%	0.2%
Other	0.1%	0.2%	0.2%	0.1%	0.4%	0.4%	0.6%	0.8%	0.7%	0.5%



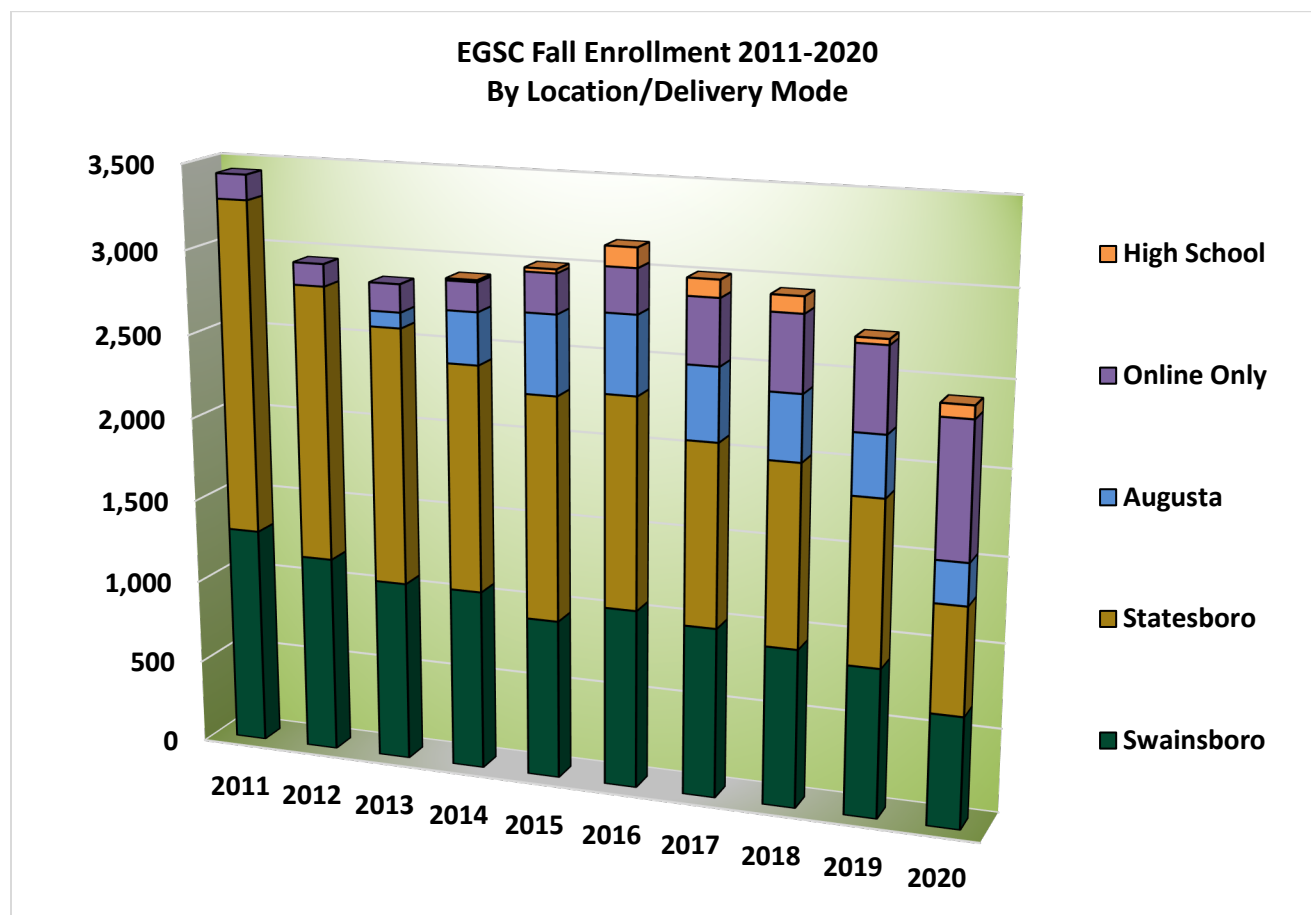
Source: EGSC Office of Strategic Planning and Institutional Research

Enrollment Counts by Location/Delivery Mode: Fall Semester 2011-2020

Fall Semester	2011	2012	2013	2014	2015	2016	2017	2018	2019	2020
High School				12	23	115	101	96	33	76
Online Only	151	131	164	171	232	260	383	443	493	797
Augusta			92	307	468	462	429	386	357	246
Statesboro	1,979	1,635	1,523	1,343	1,327	1,249	1,078	1,075	973	634
Swainsboro	1,305	1,178	1,078	1,077	951	1,066	1,012	942	885	662
Total Enrollment	3,435	2,944	2,857	2,910	3,001	3,152	3,003	2,942	2,741	2,451

Enrollment Percentages by Location/Delivery Mode: Fall Semester 2011-2020

Fall Semester	2011	2012	2013	2014	2015	2016	2017	2018	2019	2020
High School				0.4%	0.8%	3.6%	3.4%	3.3%	1.2%	3.1%
Online Only	4.4%	4.4%	5.7%	5.9%	7.7%	8.2%	12.8%	15.1%	18.0%	33.0%
Augusta			3.2%	10.5%	15.6%	14.7%	14.3%	13.1%	13.0%	10.2%
Statesboro	57.6%	55.5%	53.3%	46.2%	44.2%	39.6%	35.9%	36.5%	35.5%	26.3%
Swainsboro	38.0%	40.0%	37.7%	37.0%	31.7%	33.8%	33.7%	32.0%	32.3%	27.4%



Source: EGSC Office of Strategic Planning and Institutional Research

Enrollment Counts by Programs of Study: Fall Semester 2020

Program of Study	Fall 2020 Number	Fall 2020 Percent
AACC Transfer Pathway General Studies	691	28.6%
AS Business Administration	291	12.0%
AACC Transfer Pathway Nursing	279	11.6%
AA Elementary Education	197	8.2%
AS Biology	188	7.8%
AA Psychology	150	6.2%
AA Criminal Justice	128	5.3%
AACC Transfer Pathway Comp Science	63	2.6%
AA Art	58	2.4%
AACC Transfer Pathway Exercise & Health	54	2.2%
BS Biology	50	2.1%
AA Communication Arts	43	1.8%
AS Math	35	1.4%
BSN Nursing	33	1.4%
BA Fire & Emergency Services Administration	28	1.2%
AA English	24	1.0%
AS Chemistry	23	1.0%
AS Recreation	23	1.0%
AA History	20	0.8%
AA Sociology	19	0.8%
AA Political Science	11	0.5%
AA Fire & Emergency Services Administration	7	0.3%
Fall 2020 Total Enrollment	2,415	

Abbreviations:

AACC: Associate of Arts, Core Curriculum

AS: Associate of Science

AA: Associate of Arts

BS: Bachelor of Science

BA: Bachelor of Arts

Source: EGSC Office of Strategic Planning and Institutional Research

Fall Semester 2020 Percentages of Student Load by Class Level

Student Load	Freshman	Sophomore	Junior	Senior	Overall
Full-time	71.8%	70.5%	41.9%	30.6%	68.9%
Part-time	28.2%	29.5%	58.1%	69.4%	31.1%

Fall Semester 2020 Percentages of Gender and Ethnicity by Class Level

Gender/Ethnicity	Freshman	Sophomore	Junior	Senior	Overall
Female	56.7%	66.1%	67.4%	69.4%	60.2%
Black or African American	30.6%	31.3%	27.9%	30.6%	30.6%
White (Non-Hispanic Origin)	19.2%	27.1%	32.6%	33.3%	22.4%
Multiracial	4.3%	4.8%	4.7%	2.8%	4.4%
Hispanic	1.1%	1.0%	1.6%	2.8%	1.1%
Not Reported-Race unknown	0.7%	1.2%	0.8%	0.0%	0.8%
Asian	0.3%	0.7%	0.0%		0.4%
Am. Indian or Alaskan Native	0.3%	0.0%			0.2%
Native Hawaiian/Pacific Island	0.3%	0.0%			0.2%
Male	43.3%	33.9%	32.6%	30.6%	39.8%
Black or African American	22.5%	12.1%	11.6%	0.0%	18.6%
White (Non-Hispanic Origin)	15.1%	18.7%	18.6%	16.7%	16.3%
Multiracial	3.6%	2.2%	2.3%	5.6%	3.2%
Not Reported-Race unknown	0.7%	0.3%	0.0%		0.5%
Hispanic	0.7%	0.2%			0.5%
Asian	0.2%	0.3%	0.0%	5.6%	0.3%
Am. Indian or Alaskan Native	0.4%	0.0%		2.8%	0.3%
Native Hawaiian/Pacific Island	0.1%	0.0%		0.0%	0.1%

Fall Semester 2020 Number of Veteran/Military Students

Military Students	No.
MG - Military National Guard	21
MR - Military Reservist	6
Veteran Duty/Military Active Army	6
Total	33

Source: EGSC Office of Strategic Planning and Institutional Research

Fall Semester 2020 Counts of Gender and Ethnicity by Location/Mode of Delivery

Gender/Ethnicity	Augusta	Statesboro	Swainsboro	Online Only	High School	Total
Female	152	374	396	521	50	1,493
Black or African American	81	140	207	240	18	686
White (Non-Hispanic Origin)	49	174	156	223	25	627
Multiracial	13	37	18	41	4	113
Hispanic	4	12	8	4	2	30
Race Unknown	3	7	3	6	1	20
Asian	2	2	2	3		9
Am. Indian or Alaskan Native	0	1	1	2	0	4
Native Hawaiian/Pacific Island		1	1	2		4
Male	94	260	266	276	26	922
White (Non-Hispanic Origin)	28	132	108	119	20	407
Black or African American	51	99	132	115	4	401
Multiracial	10	17	17	28		72
Race Unknown	3	3	3	5	0	14
Hispanic	2	1	2	5		10
Asian	0	3	2	3	1	9
Am. Indian or Alaskan Native		4	1	1	1	7
Native Hawaiian/Pacific Island		1	1	0		2
Total	246	634	662	797	76	2,415

Fall Semester 2020 Percentages of Total Enrollment by Gender and Ethnicity for Location/Mode of Delivery
 (Source: EGSC Office of Strategic Planning and Institutional Research)

Gender/Ethnicity	Augusta	Statesboro	Swainsboro	Online Only	High School	Overall
Female	6.3%	15.5%	16.4%	21.6%	2.1%	61.8%
Black or African American	3.4%	5.8%	8.6%	9.9%	0.7%	28.4%
White (Non-Hispanic Origin)	2.0%	7.2%	6.5%	9.2%	1.0%	26.0%
Multiracial	0.5%	1.5%	0.7%	1.7%	0.2%	4.7%
Hispanic	0.2%	0.5%	0.3%	0.2%	0.1%	1.2%
Race Unknown	0.1%	0.3%	0.1%	0.2%		0.8%
Asian	0.1%	0.1%	0.1%	0.1%		0.4%
Am. Indian or Alaskan Native	0.0%			0.1%	0.0%	0.2%
Native Hawaiian/Pacific Island				0.1%		0.2%
Male	3.9%	10.8%	11.0%	11.4%	1.1%	38.2%
White (Non-Hispanic Origin)	1.2%	5.5%	4.5%	4.9%	0.8%	16.9%
Black or African American	2.1%	4.1%	5.5%	4.8%	0.2%	16.6%
Multiracial	0.4%	0.7%	0.7%	1.2%		3.0%
Race Unknown	0.1%	0.1%	0.1%	0.2%		0.6%
Hispanic	0.1%	0.0%	0.1%	0.2%	0.0%	0.4%
Asian	0.0%	0.1%	0.1%	0.1%		0.4%
Am. Indian or Alaskan Native	0.0%	0.2%	0.0%	0.0%		0.3%
Native Hawaiian/Pacific Island	0.0%					0.1%

Enrolled Georgia Residents County by Total Enrollment and by Assigned Campus: Fall 2020

Georgia County	Enrolled	% Total Enrollment
Richmond	317	13.1%
Columbia	216	8.9%
Bulloch	215	8.9%
Emanuel	170	7.0%
Chatham	125	5.2%
Effingham	95	3.9%
Jefferson	88	3.6%
Tattnall	88	3.6%
Toombs	72	3.0%
Screven	57	2.4%
Burke	56	2.3%
Candler	55	2.3%
Bryan	48	2.0%
Fulton	47	1.9%
Evans	40	1.7%
Washington	40	1.7%
Jenkins	34	1.4%
McDuffie	33	1.4%
Gwinnett	31	1.3%
Johnson	29	1.2%
Appling	28	1.2%
Bibb	27	1.1%
Treutlen	27	1.1%
DeKalb	24	1.0%
Henry	24	1.0%
Cobb	23	1.0%
Liberty	23	1.0%
Clayton	20	0.8%
Laurens	15	0.6%
Houston	13	0.5%
79 Other GA Counties	295	12.2%
Total from Georgia	2,375	98.3%

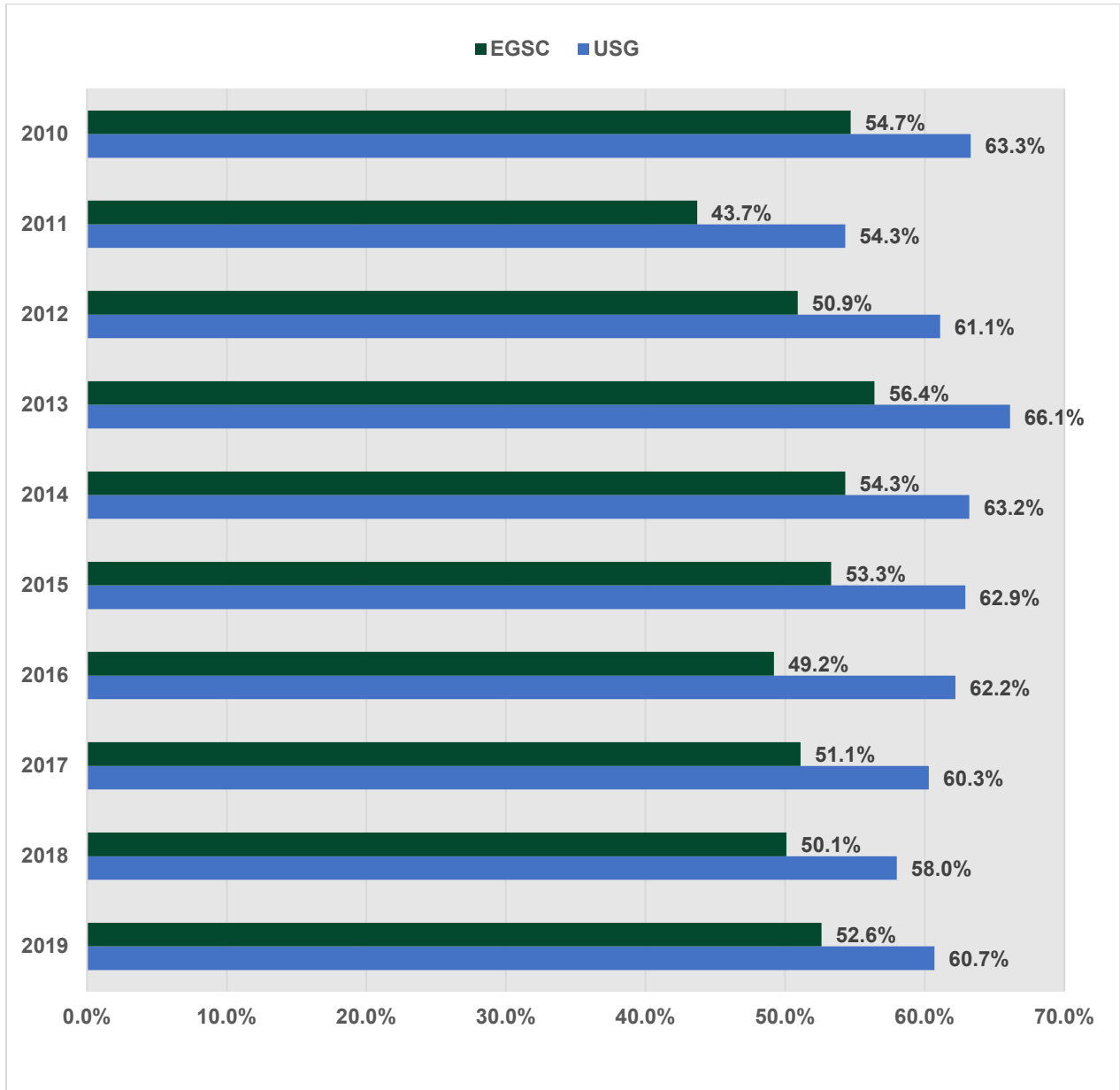
EGSC Augusta		
Georgia County	Enrolled	% Enrollment
Richmond	192	46.2%
Columbia	158	38.0%
32 Other GA Counties	57	13.7%
Total from Georgia	407	97.8%

EGSC Statesboro		
Bulloch	173	19.4%
Chatham	81	9.1%
Effingham	66	7.4%
Tattnall	51	5.7%
Screven	49	5.5%
Richmond	47	5.3%
Bryan	36	4.0%
Evans	28	3.1%
Appling	25	2.8%
Candler	22	2.5%
Columbia	22	2.5%
Burke	19	2.1%
73 Other GA Counties	266	29.8%
Total from Georgia	885	99.0%

EGSC Swainsboro		
Emanuel	157	14.2%
Richmond	78	7.1%
Jefferson	71	6.4%
Toombs	57	5.2%
Bulloch	42	3.8%
Chatham	42	3.8%
Tattnall	37	3.3%
Columbia	36	3.3%
81 Other GA Counties	563	51.0%
Total from Georgia	1,083	98.0%

Source: EGSC Office of Strategic Planning and Institutional Research

Retention Rates for First-Time Full-Time Undergraduates: Entering Cohorts 2010-2019



Source: University System of Georgia Office of Research and Policy Analysis



STUDENT RELATED INFORMATION

East Georgia State College Fact Book 2021

Correll Scholars Program

The Correll Scholars Program was established in 2014 and began Fall semester 2015 to recognize and prepare exceptionally promising students as future community leaders in our region.

- Awards are \$5,000 per student, renewable annually, for a maximum of four years. Twenty scholarships will be awarded each year.
- Students must attend East Georgia State College's Swainsboro campus.
- Correll Scholars who meet eligibility requirements and continue their studies as a junior or senior in a baccalaureate degree program at EGSC will be given first consideration for subsequent year awards.
- Students must attain qualifying enrollment status to receive subsequent year funding: "sophomore" for year two, "junior" for year three, and "senior" for year four.

Correll Scholar Highlights

135 admitted to program

- 33 Graduated EGSC and transferred for Baccalaureate degree-still in school
- 10 Graduated EGSC, transferred and obtained Baccalaureate – now in Grad/Prof program
- 16 Graduated EGSC, transferred and obtained Baccalaureate- now working in field
- 11 transferred for baccalaureate, not an EGSC graduate
- 41 still attending EGSC
- 19 removed due to lost academic eligibility
- 4 withdrew
- 1 deceased
- 52% completed Correll program
- 30% still in program
- 14% removed due to academics
- 4% withdrawal/deceased

Source: Office of Institutional Advancement

AY 2019-20 Student Housing Summary: Bobcat Residence Halls – Swainsboro Campus

Housing Capacity		437
Fall 2019	Start of Term	431
	End of Term	420
Spring 2020	Start of Term	418
	End of Term	416*

*Residence halls closed in March 2020 because of COVID-19 Pandemic

Source: EGSC Office of Housing

Crime Statistics

EGSC Augusta – Summerville Campus, Augusta University for the 2019, 2018 and 2017 Calendar Years

Reportable Offenses	Locations	2019	2018	2017
Rape	On-Campus Property	1	2	1
	On- Campus Residential Facilities	1	2	1
	Non-Campus Property	0	0	0
	Public Property	0	0	0
Fondling	On-Campus Property	1	1	1
	On- Campus Residential Facilities	1	1	1
	Non-Campus Property	0	0	0
	Public Property	0	0	0
Robbery	On-Campus Property	2	0	0
	On- Campus Residential Facilities	1	0	0
	Non-Campus Property	0	0	0
	Public Property	0	0	0
Burglary	On-Campus Property	1	1	4
	On- Campus Residential Facilities	0	1	3
	Non-Campus Property	0	0	0
	Public Property	0	0	0
Motor Vehicle Theft	On-Campus Property	0	0	1
	On- Campus Residential Facilities	0	0	0
	Non-Campus Property	0	0	0
	Public Property	0	0	0
Drug Law Violations >Arrests	On-Campus Property	2	3	10
	On- Campus Residential Facilities	2	3	6
	Non-Campus Property	0	0	0
	Public Property	0	0	0

EGSC Augusta – Summerville Campus, Augusta University for the 2019, 2018 and 2017 Calendar Years

Reportable Offenses	Locations	2019	2018	2017
Drug Law Violations >Disciplinary Referrals	On-Campus Property	2	0	0
	On- Campus Residential Facilities	2	0	3
	Non-Campus Property	0	0	0
	Public Property	0	0	0
Liquor Law Violations > Disciplinary Referrals	On-Campus Property	4	0	0
	On- Campus Residential Facilities	4	0	0
	Non-Campus Property	0	0	0
	Public Property	0	0	0
Dating Violence	On-Campus Property	0	1	3
	On- Campus Residential Facilities	0	0	3
	Non-Campus Property	0	1	0
	Public Property	0	0	0
Stalking	On-Campus Property	8	1	0
	On- Campus Residential Facilities	2	0	0
	Non-Campus Property	0	0	0
	Public Property	0	0	0

EGSC Statesboro for the 2019, 2018 and 2017 Calendar Years

Reportable Offenses	Locations	2019	2018	2017
Drug Law Violations >Arrests	On-Campus Property	0	0	0
	On- Campus Residential Facilities	0	0	0
	Non-Campus Property	0	0	0
	Public Property	2	0	0
Drug Law Violations >Disciplinary Referrals	On-Campus Property	0	0	0
	On- Campus Residential Facilities	0	0	0
	Non-Campus Property	0	0	0
	Public Property	2	0	0

EGSC Statesboro for the 2019, 2018 and 2017 Calendar Years (concluded)

Reportable VAWA Offenses	Locations	2019	2018	2017
Dating Violence	On-Campus Property	1	0	0
	On- Campus Residential Facilities	0	0	0
	Non-Campus Property	0	0	0
	Public Property	0	0	0
Domestic Violence	On-Campus Property	0	0	0
	On- Campus Residential Facilities	0	0	0
	Non-Campus Property	2	0	0
	Public Property	0	0	0

EGSC Swainsboro for the 2019, 2018 and 2017 Calendar Years

Reportable Offenses	Locations	2019	2018	2017
Fondling Sex Offense	On-Campus Property	0	0	0
	On-Campus Residential	1	0	0
	Non-Campus Property	0	0	0
	Public Property	0	0	0
	Public Property	0	0	0
Aggravated Assault	On-Campus Property	0	0	0
	On-Campus Residential	1	0	0
	Non-Campus Property	0	0	0
	Public Property	0	0	0
Burglary	On-Campus Property	0	0	1
	On-Campus Residential	1	0	1
	Non-Campus Property	0	0	0
	Public Property	0	0	0
Drug Law Violations >Arrests:	On-Campus Property	0	2	5
	On-Campus Residential Facilities	0	2	5
	Non-Campus Property	0	0	0
	Public Property	0	0	0
Drug Law Violations > Disciplinary Referrals	On-Campus Property	0	5	1
	On-Campus Residential	0	5	1
	Non-Campus Property	0	0	0
	Public Property	4	0	0

EGSC Swainsboro for the 2019, 2018 and 2017 Calendar Years (concluded)

Reportable Offenses	Locations	2019	2018	2017
Weapons Law Violations >Disciplinary Referrals	On-Campus Property	0	0	0
	On-Campus Residential	1	0	0
	Non-Campus Property	0	0	0
	Public Property	0	0	0
Drug Law Violations >Arrests	On-Campus Property	0	5	5
	On-Campus Residential	0	0	5
	Non-Campus Property	1	0	0
	Public Property	5	0	0
Drug Law Violations >Disciplinary Referrals	On-Campus Property	0	12	1
	On-Campus Residential	1	0	1
	Non-Campus Property	0	0	0
	Public Property	5	0	0
Liquor Law Violations >Arrests:	On-Campus Property	0	1	0
	On-Campus Residential Facilities	0	0	0
	Non-Campus Property	0	0	0
	Public Property	1	0	0
Liquor Law Violations > Disciplinary Referrals	On-Campus Property	20	8	2
	On-Campus Residential	0	0	2
	Non-Campus Property	0	0	0
	Public Property	1	0	0

Source: EGSC Office of Public Safety Clery Reports

East Georgia State College Graduate Alumni by State of Residence through Spring 2020

State	Alumni	State	Alumni	State/Other	Alumni
Alabama	1	Michigan	1	Rhode Island	1
Alaska	2	Minnesota	1	South Carolina	10
California	3	Missouri	2	Tennessee	3
Florida	1	Nevada	1	Texas	1
Georgia	10	New Jersey	1	Virginia	2
Illinois	4,758	New York	2	Army Post Office	1
Louisiana	1	North Carolina	4	Canada	1
Maryland	1	Pennsylvania	1		
Total			4,809		

East Georgia State College Georgia Graduate Alumni by County of Residence through Spring 2020

GA County	Alumni	GA County	Alumni	GA County	Alumni	GA County	Alumni
Appling	19	Dawson	1	Jefferson	255	Screven	81
Bacon	1	Decatur	2	Jenkins	217	Stephens	2
Baldwin	7	DeKalb	26	Johnson	299	Sumter	1
Barrow	3	Dodge	4	Laurens	34	Tattnall	157
Ben Hill	2	Dougherty	5	Liberty	35	Telfair	9
Bibb	14	Douglas	4	Lincoln	1	Tift	3
Bleckley	3	Early	1	Lowndes	2	Toombs	453
Bryan	38	Effingham	47	Long	3	Treutlen	124
Bulloch	398	Elbert	4	Macon	1	Troup	2
Burke	171	Emanuel	1,401	McDuffie	14	Upson	3
Butts	2	Evans	66	McIntosh	1	Walton	4
Camden	10	Fayette	7	Mitchell	1	Warren	2
Candler	259	Forsyth	3	Montgomery	63	Washington	29
Carroll	4	Fulton	31	Muscogee	4	Wayne	12
Chatham	54	Glascok	4	Newton	6	Wheeler	5
Cherokee	6	Glynn	8	Oconee	2	Whitfield	1
Clarke	12	Greene	1	Paulding	3	Wilcox	1
Clayton	12	Gwinnett	24	Peach	2	Wilkes	6
Cobb	23	Hall	3	Pierce	1	Unknown	8
Coffee	4	Henry	19	Polk	1	Total	4,758
Colquitt	8	Houston	19	Pulaski	1		
Columbia	39	Jackson	3	Putnam	2		
Coweta	4	Jasper	8	Richmond	105		
Crisp	1	Jeff Davis	6	Rockdale	11		

Source: Office of Institutional Advancement



FACULTY AND STAFF

Full-Time Faculty Spring Semester 2021

Humanities and Social Science - Dean Dr. Carlos Cunha

Swainsboro Campus

Courtney Joiner	Campus Coordinator, History
Natasha Goss	Accounting/Business
Desmal Purcell	Art
Dr. Brittany Strickland	Criminal Justice/Sociology
Dr. Jae Lee	Economics
Dr. Armond Boudreaux	English
Dr. Alan Brasher	English
Annliss Jordan	English
Christian Kraus	English
Dr. Carmine Palumbo	English. Study Abroad Coordinator
Julie Strickland	English
Jessica Todd	English, Spanish, French
Beverley Walker	FESA, Program Director
Johnna Eaton	Health/PE
Dr. Walt Mason	Health/PE
Dr. Anthony Di Lorenzo	History
Terri Brown	Online Learning
Dr. Lee Cheek	Pol. Science, Correll Scholars Coordinator
Larry Braddy	Psychology
Dr. Eric Wruck	Psychology
David Strickland	Sociology
Dr. Harry Vogel	Sociology
VACANT	English

Statesboro Campus

Tommy Upchurch	Campus Coordinator, History
Dr. Mark Hovind	Communications
Laura Chambers	English
Dr. Val Czerny	English
Dr. Ren Denton	English
Kathy Whitaker	English
Dr. John Giebfried	History
Dr. Jeff Howell	History
Dr. Deborah Vess	History/Art/Music
Dr. Tom Caiazzo	Pol. Science
Daniel Mancill	Pol. Science
Dr. Tori Kearns	Psychology
Deborah Lee	Psychology
David Altamirano	Sociology
Sue Bragg	Sociology
Dr. Jenny Dart	Spanish
Shawna Williams	Spanish
VACANT	Pol. Science

Augusta Campus

Dr. Jim Brady	Communications
Dr. Mary Waalkes	History
Dr. Rab'ia Hakima	English
Jason Walter	English
Rob Nordan	CATS/Music/FYE
Robert Mullins	Pol. Science

Full-Time Faculty Spring Semester 2021**Mathematics and Natural Science – Interim Dean David Chevalier****Swainsboro Campus**

Dr. John Cadle	Chair, Biology
Dr. Breana Simmons	Biology
Dr. Julius Schneider	Biology
John Smoyer	Biology
Dr. Jimmy Wedincamp	Biology
Dr. Paul Cerpovicz	Chemistry
Antre Drummer	Math
John Gleissner	Math
Candace Lynn	Math
Dr. Linda Upchurch	Director, Nursing
Dr. Patrice Pierce	Nursing
Dr. Yelena White	Physics
VACANT	Math

Statesboro Campus

Darlene Dickens	Biology
Jason Lee	Integrated Science
Dr. Damon Andrews	Chair, Mathematics
Keith Barrs	Math
Mina Vora	Math
Fang Xie	Math
Lisa Yocco	Math
Dr. Jing Kersey	Math
VACANT	Math

Augusta Campus

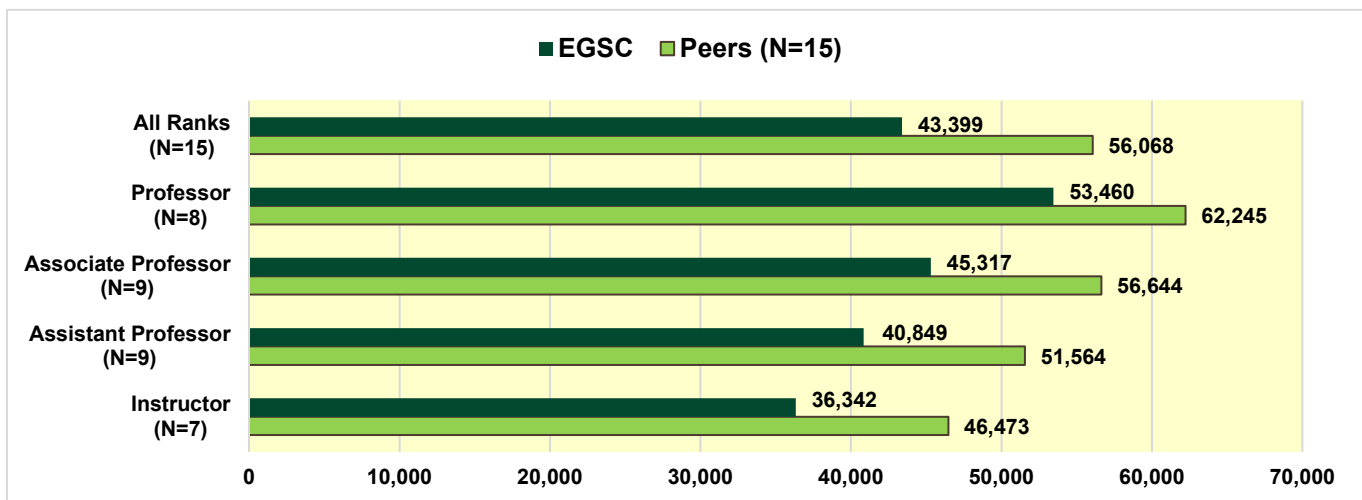
Dr. Martiana Segal	Biology
Marquez Gibson	Math

Faculty Rank by Ethnicity and Gender

Full-Time Faculty Fall Semester 2020		Professor		Associate Professor		Assistant Professor		Instructors		Total	
		No.	%	No.	%	No.	%	No.	%	No.	%
Nonresident Alien	Men					1	1.4%			1	1.4%
	Women										
Asian	Men										
	Women			2	2.9%					2	2.9%
Black	Men			1	1.4%	2	2.9%	1	1.4%	4	5.8%
	Women	1	1.4%	1	1.4%	2	2.9%			4	5.8%
Hispanic	Men			1	1.4%					1	1.4%
	Women	1	1.4%	1	1.4%			1	1.4%	3	4.3%
White	Men	9	13.0%	11	15.9%	6	8.7%	3	4.3%	29	42.0%
	Women	5	7.2%	12	17.4%	3	4.3%	4	5.8%	24	34.8%
Multiracial	Men	1	1.4%							1	1.4%
	Women										
Total	Men	10	14.5%	13	18.8%	9	13.0%	4	5.8%	36	52.2%
	Women	7	10.1%	16	23.2%	5	7.2%	5	7.2%	33	47.8%
	Total	17	24.6%	29	42.0%	14	20.3%	9	13.0%	69	100.0%

EGSC Full-Time Faculty Salaries Compared to IPED Peers AY 2018-19

Faculty Salaries	EGSC	Peers	% of Peers
All Ranks	43,399	56,068	77.4%
Professor	53,460	62,245	85.9%
Associate Professor	45,317	56,644	80.0%
Assistant Professor	40,849	51,564	79.2%
Instructor	36,342	46,473	78.2%



Source: IPEDS (Integrated Postsecondary Education Data System)

College Employees by Occupational Classification, Gender and Ethnicity: Fall Semester 2020

Employees by Occupational Category	White	Black	Hispanic	Asian	Multiracial	Nonresident Alien	Total
Men	67	7	4	0	2	1	81
Instructional Staff	29	4	1		1	1	36
Student and Academic Affairs and Other Education Services Occupations	2						2
Management	13	1	1				15
Business and Financial Operations	1						1
Computer, Engineering, and Science	1				1		2
Community, Social Service, Legal, Arts, Design, Entertainment, Sports and Media	3	1					4
Service Occupations	8						8
Office and Administrative Support	5	1	1				7
Natural Resources, Construction, and Maintenance	5		1				6
Women	71	38	3	2	0	0	114
Instructional Staff	24	4	3	2			33
Librarians and Media Collection Specialists	3						3
Student and Academic Affairs and Other Education Services Occupations	10						10
Management	10	16					26
Business and Financial Operations	1	3					4
Computer, Engineering, and Science	1						1
Community, Social Service, Legal, Arts, Design, Entertainment, Sports and Media		2					2
Service Occupations	5	7					12
Office and Administrative Support	17	6					23
Total	138	45	7	2	2	1	195

Source: IPEDS (Integrated Postsecondary Education Data System)



FINANCIAL INFORMATION

Revenue by Source: Fiscal Years 2014-15 through 2018-19

EGSC Revenue Category	FY 2014-15	FY 2015-16	FY 2016-17	FY 2017-18	FY 2018-19
Tuition and fees after deducting discounts and allowances	3,705,349	4,439,163	4,364,180	4,096,626	3,981,928
Federal operating grants and contracts	26,104	50,547	89,177	90,755	56,238
State operating grants and contracts	0	44,765	138,270	221,735	199,676
Local/private operating grants and contracts	0	12,723	18,426	5,250	19,337
Sales and services of auxiliary enterprises	2,817,517	2,092,577	2,762,654	2,714,785	2,807,410
Other sources - operating	95,016	108,873	88,873	97,091	203,118
Total operating revenues	6,643,986	6,748,648	7,461,580	7,226,242	7,267,707
State appropriations	7,088,750	6,923,831	8,442,439	9,237,733	9,984,666
Federal nonoperating grants	9,021,181	8,827,698	8,435,237	8,323,618	8,515,520
State nonoperating grants	67,703	48,469	51,585	53,017	76,518
Gifts including contributions from affiliated organizations	348,671	343,450	365,326	872,343	741,321
Investment income	5,643	3,690	6,919	11,972	31,014
Total nonoperating revenues	16,531,948	16,147,138	17,301,506	18,498,683	19,349,039
Total operating and nonoperating revenues	23,175,934	22,895,786	24,763,086	25,724,925	26,616,746
Capital grants and gifts	905,004	229,943	3,282,623	808,696	1,115,265
Total revenues and other additions	24,080,938	23,125,729	28,045,709	26,533,621	27,732,011
Percent by Line Item of Total Revenues and Other Additions					
	FY 2014-15	FY 2015-16	FY 2016-17	FY 2017-18	FY 2018-19
Tuition and fees after deducting discounts and allowances	15.4%	19.2%	15.6%	15.4%	14.4%
Federal operating grants and contracts	0.1%	0.2%	0.3%	0.3%	0.2%
State operating grants and contracts	0.0%	0.2%	0.5%	0.8%	0.7%
Local/private operating grants and contracts	0.0%	0.1%	0.1%	0.0%	0.1%
Sales and services of auxiliary enterprises	11.7%	9.0%	9.9%	10.2%	10.1%
Other sources - operating	0.4%	0.5%	0.3%	0.4%	0.7%
Total operating revenues	27.6%	29.2%	26.6%	27.2%	26.2%
State appropriations	29.4%	29.9%	30.1%	34.8%	36.0%
Federal nonoperating grants	37.5%	38.2%	30.1%	31.4%	30.7%
State nonoperating grants	0.3%	0.2%	0.2%	0.2%	0.3%
Gifts including contributions from affiliated organizations	1.4%	1.5%	1.3%	3.3%	2.7%
Investment income	0.0%	0.0%	0.0%	0.0%	0.1%
Total nonoperating revenues	68.7%	69.8%	61.7%	69.7%	69.8%
Total operating and nonoperating revenues	96.2%	99.0%	88.3%	97.0%	96.0%
Capital grants and gifts	3.8%	1.0%	11.7%	3.0%	4.0%

Source: IPEDS (Integrated Postsecondary Education Data System)

Expenditures by Function: Fiscal Years 2014-15 through 2018-19

EGSC Expense Category	FY 2014-15	FY 2015-16	FY 2016-17	FY 2017-18	FY 2018-19
Instruction	8,249,999	8,636,134	9,602,982	10,395,773	10,033,552
Academic support	2,726,503	2,476,364	2,553,984	2,927,461	2,674,731
Student services	2,114,210	2,424,760	2,265,463	2,372,957	2,200,818
Institutional support	3,161,633	3,311,666	3,472,560	3,774,566	3,835,436
Scholarships and fellowships expenses	4,582,908	4,918,265	4,507,806	4,365,503	4,516,609
Auxiliary enterprises	2,687,564	2,362,906	2,266,486	2,293,682	2,413,267
Other Functional Expenses and deductions	-	-	-	-	1,012,077
Total expenses and deductions	23,522,817	24,130,095	24,669,281	26,129,942	26,686,490
Percent by Line Item of Total Expenses and D	FY 2014-15	FY 2015-16	FY 2016-17	FY 2017-18	FY 2018-19
Instruction	35.1%	35.8%	38.9%	39.8%	37.6%
Academic support	11.6%	10.3%	10.4%	11.2%	10.0%
Student services	9.0%	10.0%	9.2%	9.1%	8.2%
Institutional support	13.4%	13.7%	14.1%	14.4%	14.4%
Scholarships and fellowships expenses	19.5%	20.4%	18.3%	16.7%	16.9%
Auxiliary enterprises	11.4%	9.8%	9.2%	8.8%	9.0%
Other Functional Expenses and deductions	-	-	-	-	3.8%
Total expenses and deductions	100.0%	100.0%	100.0%	100.0%	100.0%

Source: IPEDS (Integrated Postsecondary Education Data System)

East Georgia State College Foundation Fundraising 1999 - 2020

YEAR	TOTAL CONTRIBUTIONS	TOTAL SUPPORT AND REVENUE
1999	54,996	55,996
2000	78,784	83,109
2001	95,270	128,007
2002	93,775	81,647
2003	186,057	211,939
2004	216,682	248,861
2005	300,648	268,550
2006	178,285	221,509
2007	240,945	361,744
2008	252,896	192,454
2009	127,077	178,484
2010	234,782	270,205
2011	152,147	174,646
2012	233,908	272,130
2013	245,723	317,148
2014	247,087	363,075
2015	1,255,543	1,292,216
2016	210,392	234,614
2017	766,721	879,720
2018	789,116	880,994
2019	298,465	356,398
2020	283,319	311,582

Source: Annual audited financial statements, East Georgia State College Foundation



PHYSICAL FACILITIES

College Buildings by Major Use, Swainsboro Campus: SPRING 2021

Major Use	No.	Description
Administration	5	GL Smith, LFG, Student Services, Police Department, Plant Operations
Academic	1	Academic Building
Physical Education/Athletics	1	GYM/PE Building
Public Service	1	Fulford Center
Residential	3	Bobcat Villas South, West; Strange Clubhouse

Number of Rooms by Basic Room Type, Swainsboro Campus: Fall 2020

Basic Room Type	No.
Classrooms	20
Discipline Teaching Laboratories	9
Computer Classroom	4
Offices	158

Space Assignment by Room Use and Building Location: Fall 2020

Space Assignment by Room Use	Sq. Feet
Classroom	14,429
Discipline Teaching Laboratories	8,712
Computer Classrooms	3,421
Offices	27,052
Library	10,615
Study	8,168
General Use	29,815
Support Services	11,954
Support Facilities	7,318
Residential	90,557
Non-assignable	114,920
Healthcare	698
Special Use Facilities	21,444
Total Square Feet	349,103

East Georgia State College Land Holdings*: As of June 30, 2019

Swainsboro - 249.62 Acres

Statesboro - 10.0 Acres

*Does not include EGSC Foundation Property

Source: EGSC Office of the Director of Operations