

GEORGIA SOUTHERN INTERNS TOUR CENTER

A group of graduate and undergraduate students from around the country recently visited the Center. The students are participating in the Disparities Elimination Summer Research Experience (DESRE) internship program, a collaboration between the Rural Health Research Institute at Georgia Southern University and the Center for Rural Health and Health Disparities at Mercer University. Part of their summer experience included visiting each of the counties served by the Institute. Interns participated in a variety of community outreach activities across Bulloch, Emanuel, Candler, and Evans County. The Fulford Center is the site of the Institute's Emanuel Partnership for Rural Health monthly meetings.



HUNTER SAFETY COURSE TO BE OFFERED

The Georgia Department of Natural Resources (DNR) will provide a Hunter Education Course Tuesday, August 16 and Thursday, August 18, at the Center. Individuals born on or after January 1, 1961 must successfully complete a hunter education course prior to purchasing a season hunting license. The classes will run from 5:30 p.m. until 9:30 p.m. each day. The course is open to the public, and individuals who are 12 years of age and older are welcome to attend. Registration is required and may be made at: <https://gaevents.olspassport.com/Events/Events.aspx>.



WELLNESS SERIES CONTINUES SEPTEMBER 8

Eating healthy doesn't have to be expensive. Part 3 in our Wellness Series, *Eating Healthy on a Budget*, will be held Thursday, September 8, from noon until 1:00 p.m. Participants will receive material and tips to help make healthy choices while staying within their budget. The series is FREE and is made possible through a partnership with UGA Extension, Emanuel Medical Center, Emanuel Partnership for Rural Health, East Georgia Healthcare Center, East Georgia State College, and Sweet Tea Grille at the Mill. Lunch, a presentation, and door prizes will be provided. Enrollment is limited to 20, and registration is required. If you have questions or would like to register, please give us a call at 289-2464. We hope to see you September 8!



SUDIE A. FULFORD COMMUNITY LEARNING CENTER



FULFORD CENTER STAFF
 Jean Schwabe, Director
 Erin Youmans, Magnolia Midlands
 GYSTC Coordinator

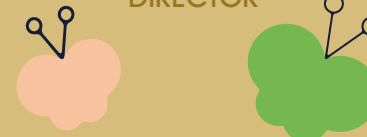
Phone: 478.289.2464
 Fax: 478.289.2465
 Email: jdschwabe@ega.edu
Normal Hours of Operation
 Monday - Friday: 8 a.m. - 5 p.m.
 Other times by appointment



**AUGUST
2016**



JEAN D. SCHWABE,
DIRECTOR



OUR MISSION

By providing an environment where learning opportunities take place and community relationships are enriched, the Sudie A. Fulford Community Learning Center will develop individual capacity and improve the quality of life for Swainsboro and Emanuel County.

OUR GOALS

Education
 Civic Engagement
 Hospitality



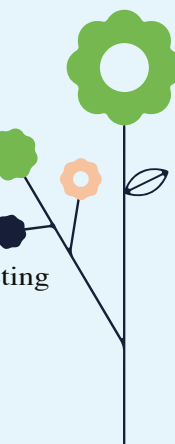
MESSAGE FROM THE DIRECTOR

Just over two hundred students were with us this summer for our Fulford Camps...what an incredible summer! Campers explored the frontiers of 21st century science and technology, sharpened their chess skills, learned about famous artists and created what might just be the next great masterpiece. At Camp Invention, students created DIY solar-powered crickets, designed an eco-adventure park, and discovered the science of slime, demolition, electronic sound, giant squid, and coding. My sincere thanks to all the campers, instructors, volunteers, and parents for a truly amazing summer. Each year, we say it was the best summer ever, and once again, we have to say...this was the BEST summer ever!

The Fulford Center is dedicated to providing an environment where learning opportunities take place and community relationships are enriched. We hope you'll join us for an upcoming event!

UPCOMING EVENTS

- August 1---New Full-time Faculty Workshop
- August 3---EGSC Humanities/Social Science Luncheon
- August 11---Emanuel County Family Connection
EGSC Strategic Planning Retreat
- August 16---Hunter Safety Course
- August 18---Emanuel County Family Connection Strategy Team Meeting
Hunter Safety Course
- August 19---GSU Partnership for Rural Health Meeting
- August 23---EGSC/Area Scholastic Chess Club Meeting



SUMMER FUN AT THE FULFORD CENTER!



I CAN INVENT.
MAKER STUDIO

CharityLife
I
Innovation