

# WHO BROUGHT COMMUNITY TO THE FULFORD CENTER IN 2016?

2nd Annual Amazing Science Day  
 3rd Annual Fulford Leadership Academy  
 4-H State Congress  
 4th Annual EGSC Scholastic Invitational Chess Tournament  
 4th Annual Fulford Leadership Academy I & II  
 4th Annual Youngblood Invitational Chess Tournament  
 6th Annual Family Astronomy Night  
 Altamaha Electric Membership Corporation  
 Art for Kids Camp  
 Bobcat Buddies/Correll Scholars  
 Briarwood Academy  
 Camp Adventure V  
 Camp Howard  
 Camp Invention  
 Candler County Archway Partnership  
 David Emanuel Academy 1st Grade  
 David Emanuel Academy 2nd Grade  
 David Emanuel Academy 4th Grade  
 David Emanuel Academy 5th Grade  
 David Emanuel Academy 6th Grade  
 Dixie Theater Renovation Committee  
 EGSC Alumni Gala  
 EGSC Baseball Team  
 EGSC CHOICE Program  
 EGSC Fellowship of Christian Athletes  
 EGSC Fire and Emergency Services Administration Program  
 EGSC Humanities Division  
 EGSC Integrated Science Classes  
 EGSC New Full-time Faculty  
 EGSC Phi Theta Kappa  
 EGSC Science Olympiad  
 EGSC Social Science Division  
 EGSC Strategic Planning  
 EGSC/Area Scholastic Chess Club  
 Emanuel County Board of Education  
 Emanuel County Family Connection  
 Emanuel County Head Start Program  
 Emanuel County Home School  
 Emanuel County Institute PREP  
 Emanuel County Law Enforcement  
 Emanuel County Schools 2nd Grade Classes  
 Emanuel County Schools Food Nutrition Division  
 Emanuel Medical Center  
 Emanuel Retired Educators Association Executive Committee

Georgia Cyber Academy  
 Georgia Department of Education School Effectiveness Division  
 Georgia Department of Education School Nutrition Program  
 Georgia Department of Natural Resources/Hunter Safety Course  
 Georgia Southern University Partnership for Rural Health  
 Georgia State Patrol  
 Glad Garden Club  
 Governor David Emanuel-Adam Brinson Daughters of the American Revolution  
 Ida Bell Williams Book Club  
 Intermediate/Advanced Chess Camp  
 Jenkins County 1st Grade  
 Leap Into Science Camp  
 Magnolia Midlands GYSTC Board of Directors  
 McDaniel Bridesmaid Luncheon  
 Metter Elementary School 2nd Grade  
 Miss EGSC Pageant Interviews and Judges Dinner  
 NEA Big Read Grant  
 Ogeechee Behavioral Health Services  
 Ogeechee Day Services  
 Regional Certified Teen Leader Training  
 SAT Critical Reading/Writing Reviews  
 SAT Math Reviews  
 Science for Kids Camp  
 Sherman's March Orientation  
 Smithsonian Exhibit Planning Committee  
 Southeast Financial Directors  
 Swainsboro Elementary 4th Grade  
 Swainsboro Pre-K Program  
 Swainsboro Primary School 1st Grade  
 Swainsboro Primary School 2nd Grade  
 Swainsboro/Emanuel County Chamber of Commerce  
 Tattnall County Home School  
 The Sunshine House  
 Total Wellness Series  
 Twin City Pre-K Program  
 UGA College of Environment and Design  
 UGA Extension Economics Training  
 USG General Education Council  
 Vision 2020/Swainsboro/Emanuel County Chamber of Commerce  
 Wadley Head Start  
 Wrens Middle School PREP  
 Yoga Series

**2016 Total Visitors---8183**

**Planetarium Shows---143**

## FULFORD CENTER ADVISORY BOARD

Alan Brasher	Darlene Dickens	Elizabeth Kraus	Sharon Weatherford
Clair Collins	Kenny Griffin	Jean Schwabe	Syvetta Young
Ada Lee Correll	Courtney Joiner	Toni Terwilliger	



FULFORD CENTER STAFF  
 Jean Schwabe, Director  
 Erin Youmans, Magnolia Midlands  
 GYSTC Coordinator

Phone: 478.289.2464  
 Fax: 478.289.2465  
 Email: [jdschwabe@ega.edu](mailto:jdschwabe@ega.edu)  
 Normal Hours of Operation  
 Monday - Friday, 8 a.m. - 5 p.m.  
 Other times by appointment



JANUARY  
2017

### OUR MISSION

By providing an environment where learning opportunities take place and community relationships are enriched, the Sudie A. Fulford Community Learning Center will develop individual capacity and improve the quality of life for Swainsboro and Emanuel County.

### OUR GOALS

Education  
 Civic Engagement  
 Hospitality



*Happy New Year!*

### UPCOMING ACTIVITIES

- Glad Garden Club Meeting---January 9
- Wadley Head Start Planetarium Visit---January 10
- Downtown Development Association Board Retreat---January 11
- Emanuel County Family Connection Meeting---January 12
- Edmund Burke Academy 2nd Grade Planetarium Visit---January 13
- Thomas Jefferson Academy Pre-K Planetarium Visit---January 19
- Early Childhood Development Professional Development---January 21
- Emanuel County Family Connection Strategy Team Meeting---January 24

### Message From The Director

Happy New Year! 2016 was an exciting year at the Fulford Center. During the year, we

- welcomed 8183 visitors.
- provided 143 planetarium shows.
- conducted seven summer camps.
- held our 3rd Annual Fulford Youth Leadership Academy
- began our expanded Fulford Youth Leadership Academy I & II
- partnered with Emanuel Medical Center, UGA Extension, GSU Partnership for Rural Health and East Georgia Healthcare to provide a quarterly Total Wellness series.
- held our 6th Annual Family Astronomy Night.
- conducted four SAT Review sessions for area students.
- received \$17,400 in grant funds from Mill Creek Foundation and Nordson for planetarium software and scholarships for Camp Invention®.

With sincere appreciation to all who participate in Center activities and those who contribute to making the Sudie A. Fulford Community Learning Center a robust center of intellectual and engaging activities, we are grateful for our work with you in 2016, and we look forward to working together in the new year!



JEAN D. SCHWABE,  
DIRECTOR

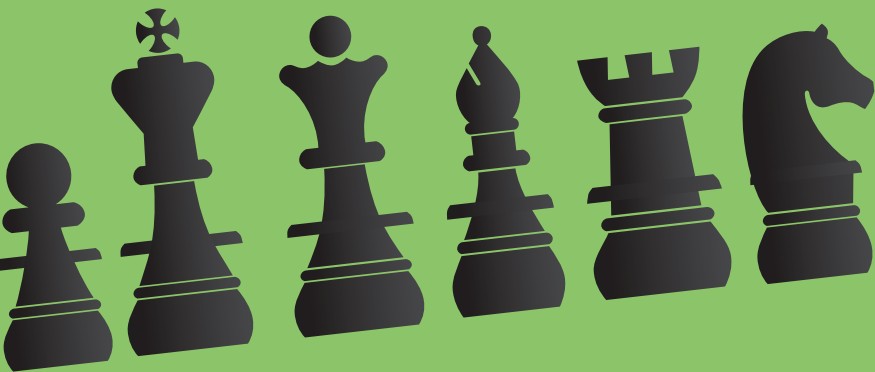
## NEW FULFORD ADVISORY BOARD MEMBER ANNOUNCED



At its December board meeting, the Fulford Advisory Board welcomed new member Dr. Alan Brasher. Dr. Brasher serves as one of the East Georgia State College board representatives and is professor of humanities at the college.

Dr. Brasher is an award-winning faculty member and is actively involved in the community. He will add invaluable insights to the Fulford Board, and we are very excited to welcome him!

## 4th ANNUAL YOUNGBLOOD CHESS TOURNAMENT HELD



Twenty-four students from Swainsboro, Twin City, Statesboro, Metter, and Vidalia competed in the 4th Annual Youngblood Chess Tournament in December. The tournament was a huge success and provided some outstanding performances throughout the day. **Award winners included:** 1st Place-Jackson Williamson (Vidalia Heritage Academy), 2nd Place-Alexander Muzafarov (Vidalia Heritage Academy), and 3rd Place-Connor Higgs (Sally Meadows Elementary, Vidalia).

**Sections winners included:** Spencer Lawrence Conner Merier, and Gavin Gay (all of Twin City Elementary), Drake Menard and Grant Ostebuhr (both of Vidalia Heritage Academy).

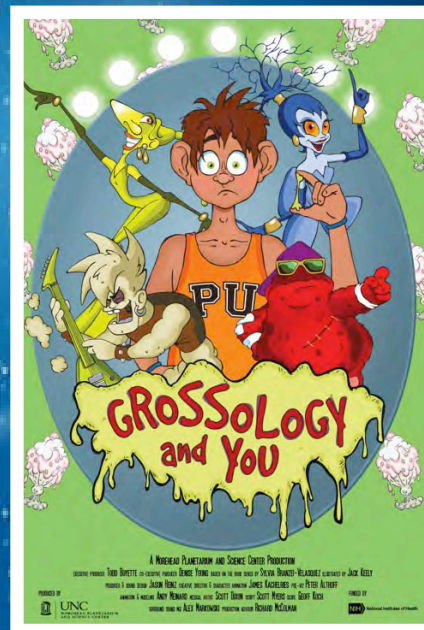
The 5th Annual East Georgia State College Scholastic Invitational Chess Tournament is scheduled for Saturday, April 15. More information regarding this tournament will follow in future newsletters.

## NEW PLANETARIUM SHOW PURCHASED

As part of its goal to expand planetarium offerings, the Fulford Center recently purchased **GROSSOLOGY AND YOU**.

With its focus on human anatomy and physiology, "Grossology & You" is one of the first planetarium shows to venture beyond the traditional astronomy and space science themes for which planetariums are best known.

The animated planetarium show follows the adventures of the Kid, a teenage boy who is looking into his bathroom mirror when he is suddenly pulled into an astonishing game show — inside his body — led by Noreen Neuron, the "brains of the operation." He meets three contestants (rapper Scabby, disco diva Boogie and rocker Flatus) who are competing to determine which system of the human body is most important. Is it the immune system, the respiratory system or the digestive system? Together, they discover that all of the systems work together to keep the human body healthy ... but not until they see what happens if the systems fail!



## DECEMBER WAS PACKED WITH A HOST OF FUN-FILLED ACTIVITIES

### SPS 1st grade



### SPS 2nd grade



### SPS 1st grade



### Fulford Youth Leadership Academy



### Fulford Youth Leadership Academy I



### Fulford Youth Leadership Academy II

